

# Installing the Medical Objects Explorer

## Overview

- 1 Overview
- 2 Installing the Medical-Objects Explorer

This guide provides instructions for installing the Medical-Objects Explorer (Meridian) software for sending and receiving results on a Windows based system.

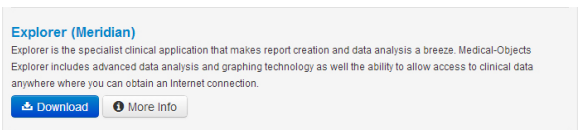
If you have any further questions or require assistance with the installation, Please contact the Medical-Objects Helpdesk on (07) 5456 6000.

## Installing the Medical-Objects Explorer

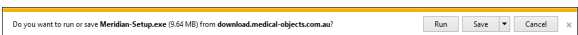
1. Download the Medical-Objects Explorer from the following link.

<http://download.medical-objects.com.au>

2. Click the download button under the **Explorer (Meridian)** link.




3. The following window will appear.



4. Click the **Save** option.
5. The following **Save As** window will appear. Save the **Explorer-Setup.exe** in the directory **C:\MO**.

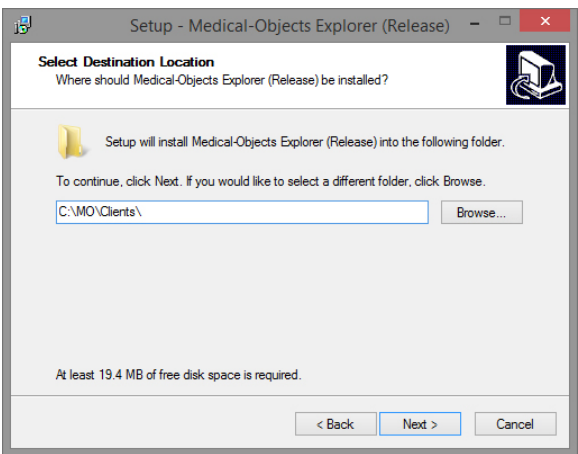
Note:

 If the directory does not exist, you must create it.

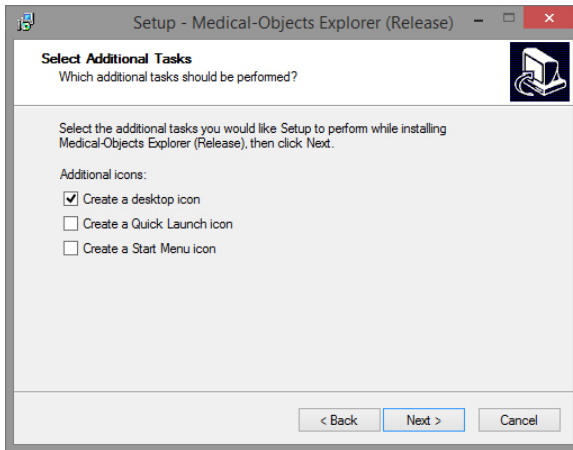
6. Ones you have clicked **Save**, the following download screens will appear.



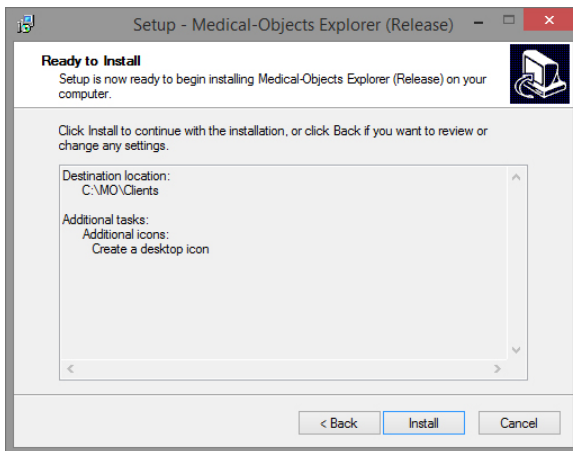
7. After the file has completed downloading, Click the **Run** option.
8. The installer will launch. Click **Next**.



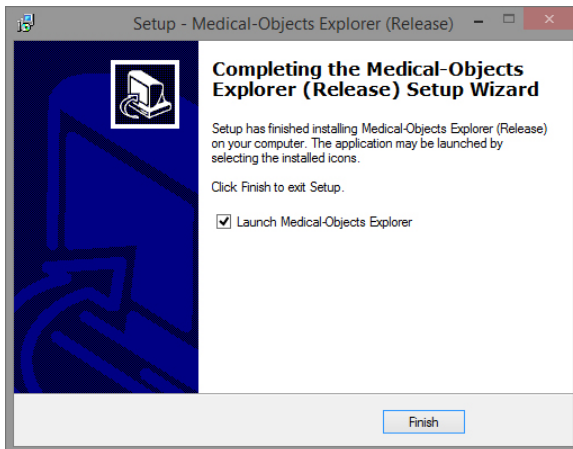
9. Click **Next**. Leave the paths as default.
10. Set any additional options you like in the following window, and select **Next**.



11. Click the **Install** button to begin.



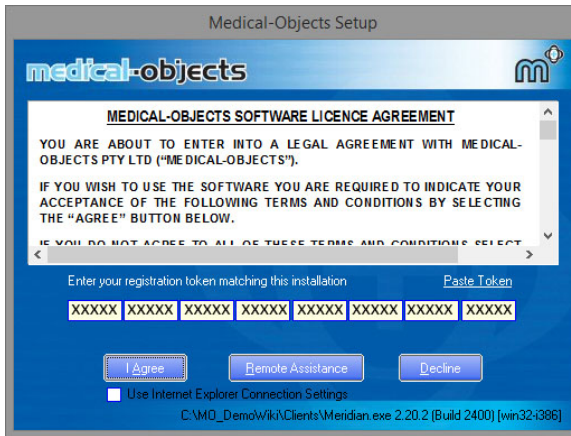
12. When the install is complete, Select **Finish**.



13. After a few moments you will be presented with a registration screen. You will need to enter the Token you acquired from the Medical-Objects helpdesk. If you do not have a token, Contact the Medical-Objects helpdesk on (07) 5456 6000.

Note:

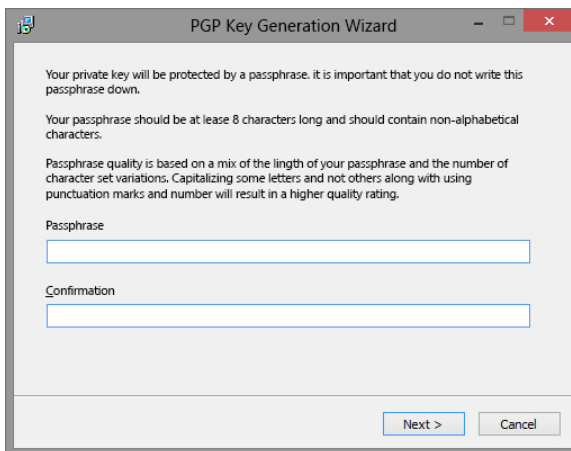
The token will be sent to you in an email from the Medical-Objects helpdesk. If you do not have a token, or haven't received one, Please contact the Helpdesk on (07) 5456 6000.



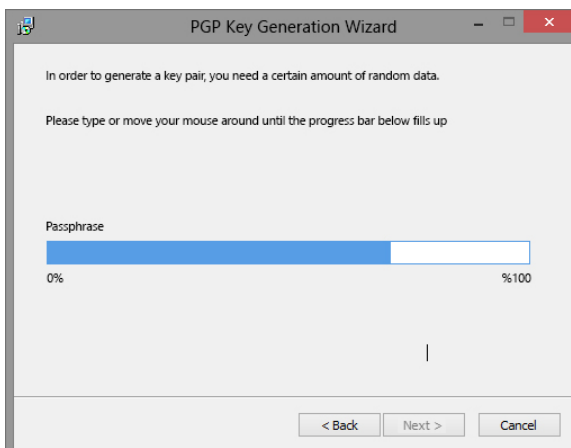
Copy the token from the email, and click on the **Paste Token** link in the registration screen. The token will automatically be entered.

14. Click **I agree** to proceed.
15. The **PGP key Generation** window will appear.

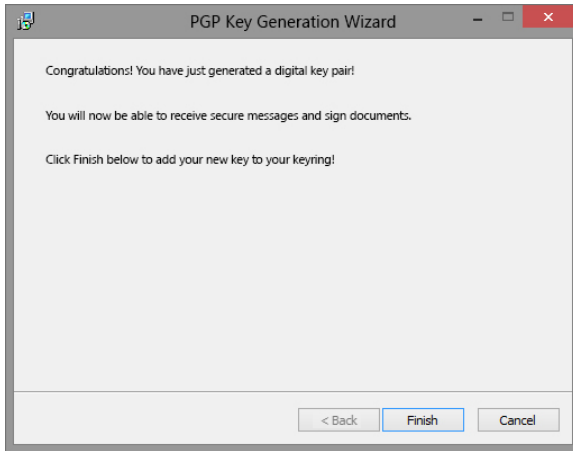
The password you set here will be used for logging into the software. If you forget this password, you will need to have the software reinstalled as this password cannot be reset.



16. Once you click **Next**, the following window will appear. At this window, Just type anything or move the mouse until the blue bar fills to 100%, Then click **Next**.



17. Once you click the **Finish** button, the Medical-Objects Explorer program will open.



18. You will be asked to enter the passphrase you set earlier before you can continue. Once entered correctly, You will be able to use the Medical-Objects Explorer.

