

Manage Queues

AUDIT4 OUTGOING REF

- 1. On the **Manage Queues** screen, click **Add**.
- 2. On the **Queue Setup** screen, name the queue and set its base directory.

Queue Setup

Queue name

AUDIT4 OUTGOING REF

Base Directory

C:\Inpath\MO\Out

OK

Cancel

- 3. Enter the details as outlined below.

```
(Capricorn installed on an Audit4 server machine) -->

Queue name:                                AUDIT4
OUTGOING REF
Base Directory                             C:
\Inpath\MO\Out\

(Capricorn installed on an Audit 4 client machine) -->

Queue name:                                AUDIT4
OUTGOING REF
Base directory:
\\Server\Inpath\MO\Out\
```

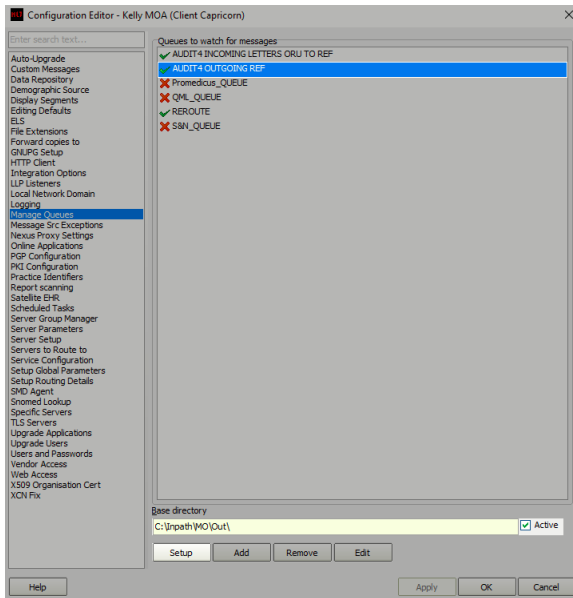
- 4. Click **OK** on the queue setup, click the queue named **AUDIT4 OUTGOING REF** in the queues to watch for messages and click on **Setup** at the bottom of the configuration window.

1 AUDIT4 OUTGOING REF

2 Previously Setup Queues

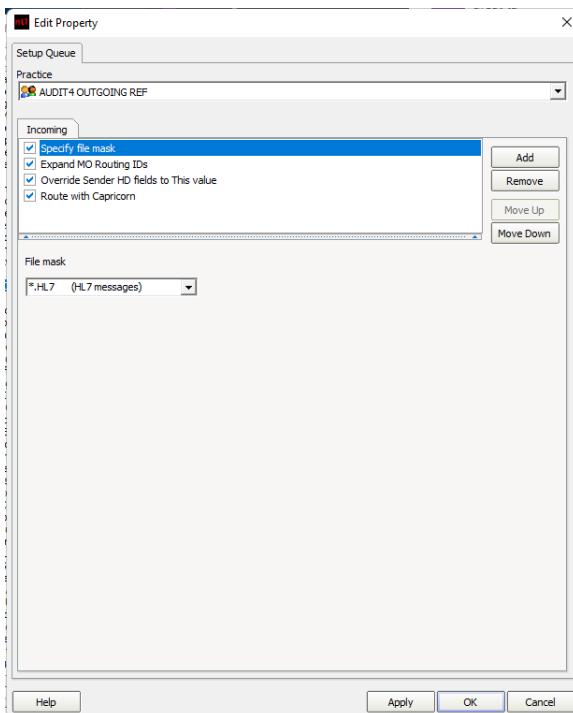
2.1 AUDIT4 INCOMING LETTERS ORU TO REF

2.2 AUDIT4 OUTGOING RRI TO ACK



- On the right-hand side, click on **Add**. Select the decorators listed below in the order displayed and configure as specified on the right.

Specify file mask	-Set File Mask to *.
Hl7	
Expand MO Routing IDs	-No additional
settings.	
Override Sender HD fields to This value	-Tick "Use
Primary Practice Identifier"	
Route with Capricorn	-No additional
settings.	



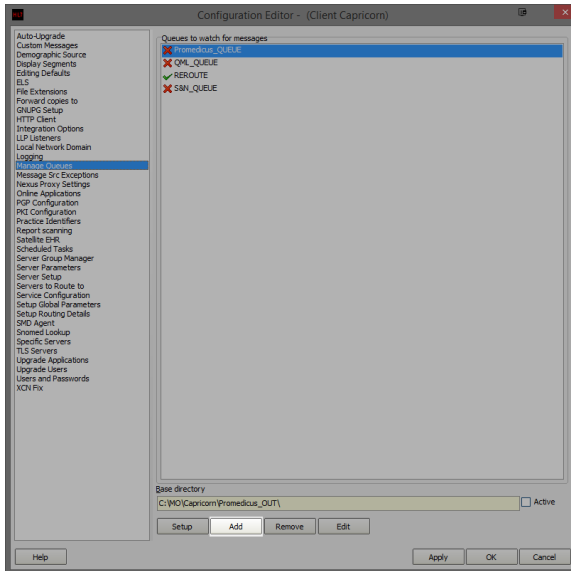
- Click **Apply** and **OK** to save the **AUDIT4 OUTGOING REF** queue and return to the **Manage Queues** configuration screen.

Previously Setup Queues

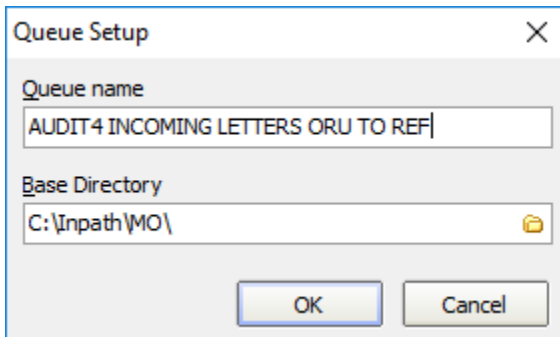
AUDIT4 INCOMING LETTERS ORU TO REF

No longer required if Capricorn 3.2.5.36 and above in use.

- Select **Managed Queues** from the left panel.



- In the **Managed Queues** menu click **Add**.
- The queue setup window will open.



- Enter the details as outlined below.

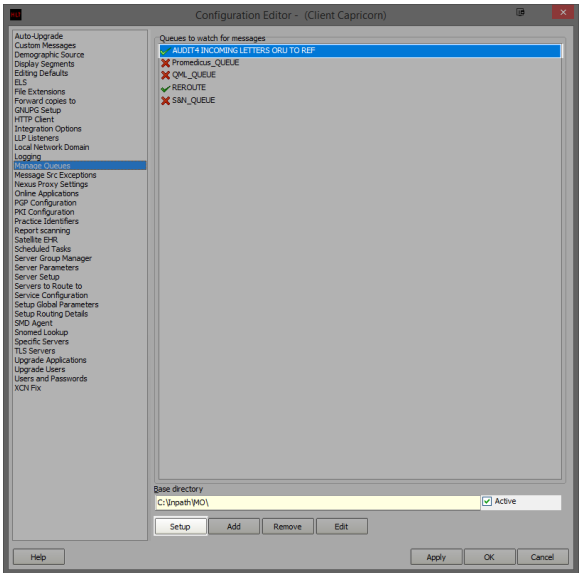
```
(Capricorn installed on an Audit4 server machine) -->

Queue name:                                AUDIT4 INCOMING
LETTERS ORU TO REF
Base Directory:                            C:\Inpath\MO\

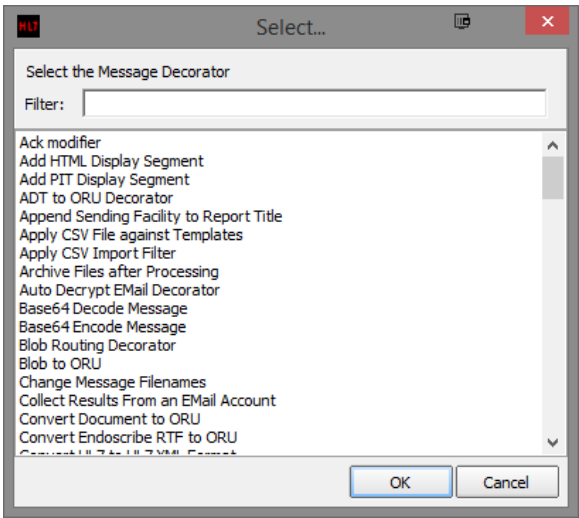
(Capricorn installed on an Audit 4 client machine) -->

Queue name:                                AUDIT 4
INCOMING LETTERS ORU TO REF
Base Directory:                            \\Server\Inpath\MO\
```

5. Click **OK** on the queue setup, click the queue named **AUDIT4 INCOMING LETTERS ORU TO REF** in the queues to watch for messages and click on **Setup** at the bottom of the configuration window.

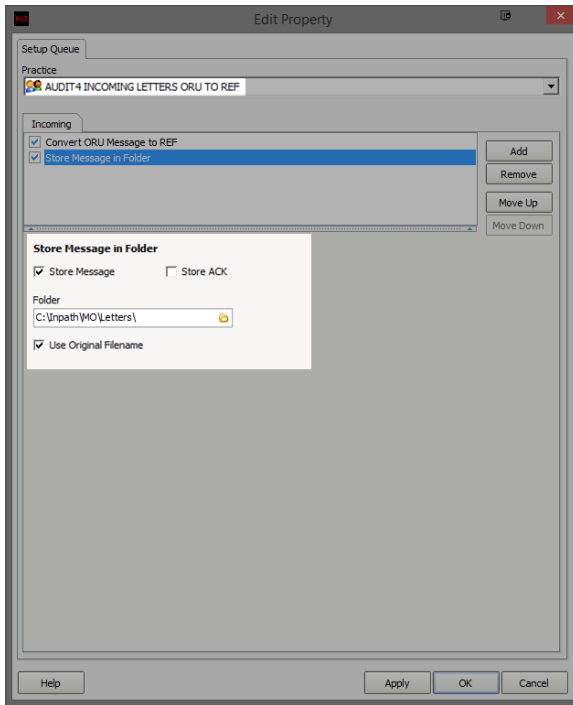


6. In the edit property window, we are going to setup the queue to convert the letters from **ORU** to **REF** for Audit4 import. On the right hand side, click on **Add**.




Convert ORU Message to REF	No
additional settings.	
Store Message in Folder	Additional
settings required.	

7. Once you have added both decorators you will need to supply additional configuration for the **Store Message in Folder**. Highlight the **Store Message in Folder** decorator on the edit property window. Notice that there are additional configuration options displayed below the decorator list. Make sure **Use Original Filename** is ticked.



8. Leave the tick-box's on their default configuration and set the file path for the converted letters to be saved.

Note:

 This folder will not exist and will need to be created before setting the file path.

```
(Capricorn installed on an Audit 4 server)

Store Message in Folder                                C:
\Inpath\MO\Letters\

(Capricorn installed on an Audit4 client machine)

Store Message in
Folder
\\Server\Inpath\MO\Letters\
```

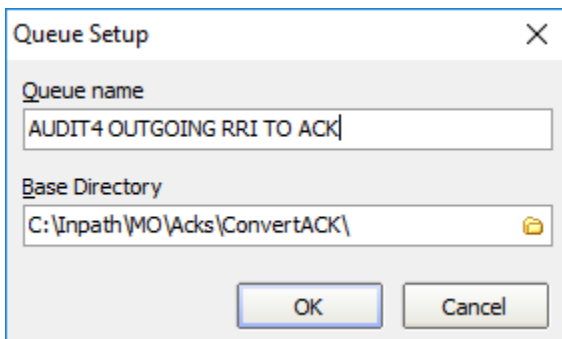
9. Click **Apply** and **OK** to save the **AUDIT4 INCOMING LETTERS ORU TO REF** queue and return to the **Manage Queues** configuration screen.

AUDIT4 OUTGOING RRI TO ACK

No longer required if Capricorn 3.2.13.61 and above in use.

On the **Manage Queues** screen, click **Add**.

1. On the **Queue Setup** screen, name the queue and set its base directory.



The image shows a 'Queue Setup' dialog box with a close button (X) in the top right corner. It contains two input fields: 'Queue name' with the text 'AUDIT4 OUTGOING RRI TO ACK' and 'Base Directory' with the text 'C:\Inpath\MO\Acks\ConvertACK\'. Below the fields are 'OK' and 'Cancel' buttons.

(Capricorn installed on an Audit4 server machine) -->

```
Queue name:                                AUDIT4
OUTGOING RRI TO ACK
Base Directory:                            C:
\Inpath\MO\ACKs\ConvertACK
```

(Capricorn installed on an Audit 4 client machine) -->

```
Queue name:                                AUDIT4
OUTGOING RRI TO ACK
Base directory:
\\Server\Inpath\MO\ACKs\ConvertACK
```

Note:



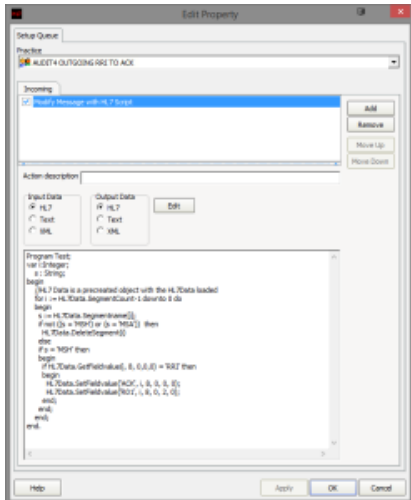
The folder **ConvertACK** will not exist and will need to be created before setting the file path.

2. Select **AUDIT4 OUTGOING RRI TO ACK** from the **Queues to Watch for Messages** and click **Setup**.
3. Select **Add** from the right side of the **Edit Properties** window.
4. You can search the decorators by typing in their name when one of the decorators is highlighted.

```
Modify message with HL7 script. - Additional settings required.
Store message In folder - addition settings required.
```

5. In the **Edit Properties**, we need to add the HL7 Script to the **Modify Message with HL7 Script** configuration section.
6. You must paste the script exactly as shown below into the text box in the modifiers configuration. Be sure there are no extra spaces or empty lines at the top.

HL7 Script.

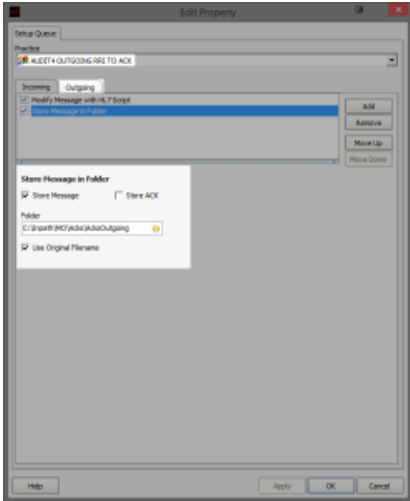


```

Program Test;
var i:Integer;
    s : String;
begin
    //HL7 Data is a precreated object with the HL7Data loaded
    for i := HL7Data.SegmentCount-1 downto 0 do
        begin
            s := HL7Data.Segmentname[i];
            if not ((s = 'MSH') or (s = 'MSA')) then
                HL7Data.DeleteSegment(i)
            else
                if s = 'MSH' then
                    begin
                        if HL7Data.GetFieldvalue(i, 8, 0,0,0) =
'RRI' then
                            begin
                                HL7Data.SetFieldvalue('ACK', i, 8,
0, 0, 0);
                                HL7Data.SetFieldvalue('R01', i, 8,
0, 2, 0);
                            end;
                        end;
                    end;
                end;
            end;
        end;
    end.

```

7. If you haven't already, you will need to add the **Store Message in Folder** Decorator to the **AUDIT4 OUTGOING RRI TO ACK** Queue.



(Capricorn installed on a Audit4 Server Machine) -->

Store Message in Folder: C:
\Inpath\MO\ACKs\ACKsOutgoing

(Capricorn installed on a Audit4 Client Machine) -->

Store Message in Folder:
\\Server\Inpath\MO\ACKs\ACKsOutgoing

8. Click **Apply** and **OK** to save the **AUDIT4 OUTGOING RRI TO ACK** Queue and return to the **Manage Queues** configuration Screen.
9. Click **Apply** and **OK** to save the current configuration and to exit the Capricorn configuration editor.

You have now completed the configuration for the Medical Objects Capricorn to download and send acknowledgements.