

# Capricorn Configuration for Shexie Sending

## Overview

This section includes instructions for setting up the Medical-Objects Capricorn for sending through Shexie. This step is designed to be included in the Capricorn configuration for Shexie [Here](#).

You will also need to set up providers within the Shexie address book. This step can be found [here](#).

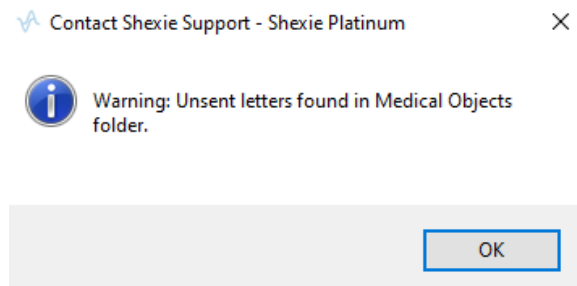
If you require any assistance with the installation or configuration, or if you have any questions, please contact the Medical-Objects Helpdesk on (07) 5456 6000.

If you have not Installed the Medical-Objects Download client, Please see the guide for [Installing Capricorn on Windows](#).

- 1 [Overview](#)
- 2 [Shexie warning system](#)
- 3 [Configuring Capricorn Software](#)
  - 3.1 [Accessing the Capricorn Configuration Window](#)
  - 3.2 [Capricorn Configuration Settings](#)

## Shexie warning system

Newer Shexie installs from 31/08/2020 may show the following warning on first log in for the day. The wording will be "Unsent letters found in Medical Objects folder." **This is an important error and needs to be resolved ASAP for correspondence being sent electronically to be delivered.**



Normally the customer will contact Shexie support and they will in turn liaise with the Medical Objects helpdesk to resolve the issue. Alternatively the Medical Objects helpdesk can liaise with Shexie support if the customer contacts us first.

## Configuring Capricorn Software

### Accessing the Capricorn Configuration Window

Note:

In some cases, the Capricorn may be configured as a service. See [this guide](#) for instructions on how to launch the Capricorn if it is set up as a service.

1. To launch the HL7 Tray application, Go to **Start Menu, All Programs, Medical-Objects** and select the **Medical-Objects Capricorn**. Alternatively, You can go to **C:\MO\Capricorn** and run the **Capricorn.exe**.
2. The following icon will appear in the tray. Double click on it to bring up the log window.




3. When the log window is displayed, Click on the **Configuration** icon highlighted below, or select **Utility** and select **Configuration**.



### Capricorn Configuration Settings

Note:

 Create two sending queues (PIT Sending & HL7 Sending)

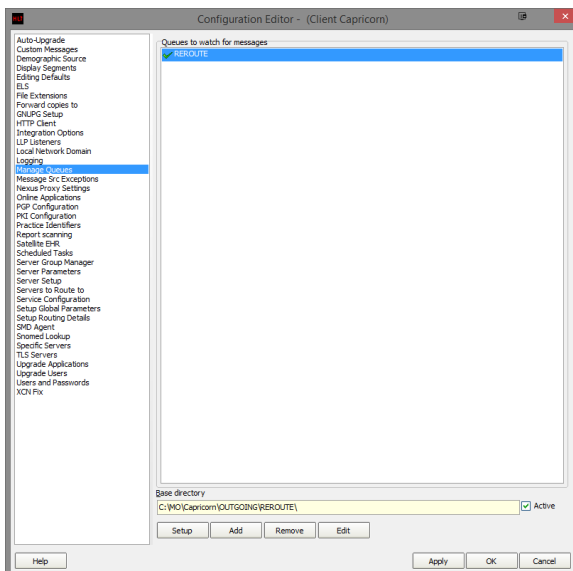
1. To launch the HL7 Tray application, Go to **Start Menu, All Programs, Medical-Objects** and select the **Medical-Objects Capricorn**. Alternatively, You can go to **C:\MO\Capricorn** and run the **Capricorn.exe**.
2. The following icon will appear in the tray. Double click on it to bring up the log window.



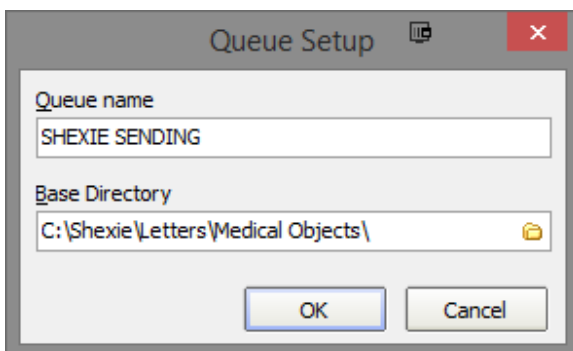
3. When the log window is displayed, Click on the **Configuration** icon highlighted below, or select **Utility** and select **Configuration**.



1. Click on **Manage Queues** in the left hand side panel.




2. Click **Add**.



Set the Queue name to SHEXIE SENDING

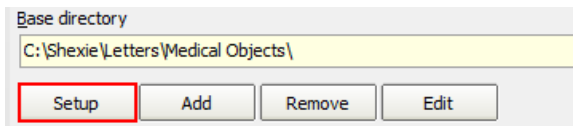
Set the Base Directory to C:\Shexie\Letters\Medical Objects\

Note:

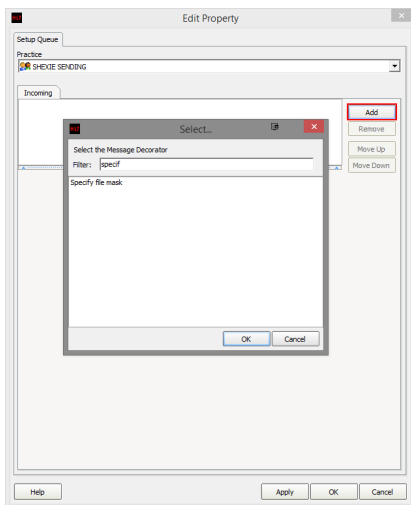
 Please note that the Base Directory location can change, depending on the version of Shexie you own and where it is installed to.

Click the **OK** button to save.

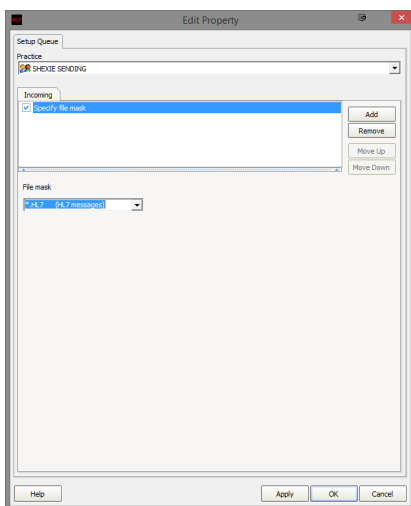
3. Click the **setup** button.



4. Click the **Add** button and search for **Specify File Mask**.



5. Set the file mask to **\*.HL7 (HL7 Messages)**



6. Add the following decorators using the previous steps.

For sending as **HL7**, use the following.

Specify File mask (Set to **\*.HL7 (HL7 Messages)**)  
Override Sender HD Fields to This Value  
Expand MO routing ID's  
Modify Message with HL7 Script  
Route with Capricorn

For sending as **PIT**, Use the following.

Specify File mask (Set to **\*.PIT (PIT Files)**)  
Convert PIT to HL7 (Set to **Clinical letter or report (PHY)**)  
Override Sender HD Fields to This Value  
Expand MO Routing ID  
Modify message with HL7 Script  
Route with Capricorn

Note:



Please note that for the **Override Sender HD Fields to This Value** decorator, You will need to contact Medical-Objects to obtain the Practice Identifier details. This applies for both queues.

7. Add the following script in the box provided for **Modify Message with HL7 Script**. Please note that the same script applies to both HL7 and PIT sending.

```
program FixResultStatus;  
  
begin  
  if HL7Data['OBR.25.0'] = '' then  
    HL7Data['OBR.25'] := 'F';  
  
  end.
```

8. Click the **Apply** and **OK** buttons to save your settings.