

# Audit4

## Overview

This guide provides instruction on configuring both Medical-Objects Capricorn and Audit4 software to import electronic results.

If you require any assistance with the installation or configuration, or if you have any questions, please contact the Medical-Objects Helpdesk on (07) 5456 6000.

If you have not Installed the Medical-Objects Download client, Please see the guide for [Installing Capricorn on Windows](#).

## Configuring Capricorn Software

### Accessing the Capricorn Configuration Window

Note:

In some cases, the Capricorn may be configured as a service. See [this guide](#) for instructions on how to launch the Capricorn if it is set up as a service.

1. To launch the HL7 Tray application, Go to **Start Menu, All Programs, Medical-Objects** and select the **Medical-Objects Capricorn**. Alternatively, You can go to **C:\MO\Capricorn** and run the **Capricorn.exe**.
2. The following icon will appear in the tray. Double click on it to bring up the log window.



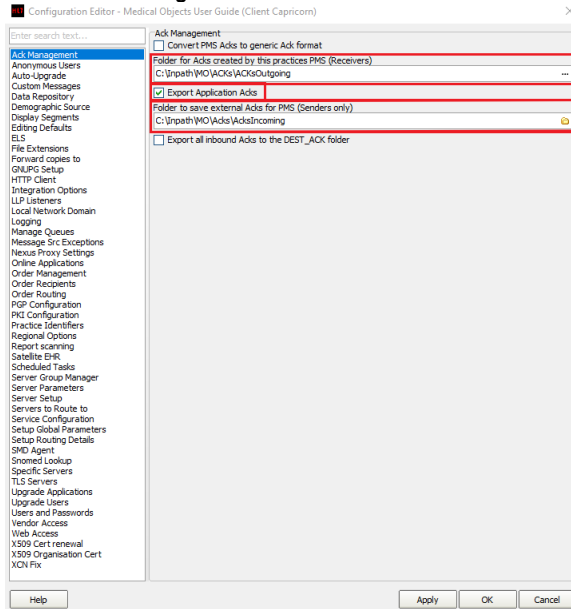
3. When the log window is displayed, Click on the **Configuration** icon highlighted below, or select **Utility** and select **Configuration**.



### Capricorn Configuration Settings

- 1 Overview
- 2 Configuring Capricorn Software
  - 2.1 Accessing the Capricorn Configuration Window
  - 2.2 Capricorn Configuration Settings
  - 2.3 Current Manage Queues
    - 2.3.1 AUDIT 4 OUTGOING REF
  - 2.4 Historical Manage Queues
    - 2.4.1 AUDIT 4 INCOMING LETTERS ORU TO REF
    - 2.4.2 AUDIT 4 OUTGOING RRI TO ACK
- 3 Software for Specialists (Audit4) Configuration.

## 1. Click on **Ack Management**.



## 2. Set the **ACK Management** Receivers path as below:

```
(Capricorn installed on an Audit 4 Server machine ) --
> C:\Inpath\MO\ACKs\ACKsOutgoing

(Capricorn installed on an Audit 4 client machine --
> \\Server\Inpath\MO\ACKs\ACKsOutgoing
```

### 2.1 Check **Export Application Acks**.

### 2.2 Set the **ACK Management** Senders Only path as below:

```
(Capricorn installed on an Audit 4 Server machine ) --
> C:\Inpath\MO\Acks\AcksIncoming

(Capricorn installed on an Audit 4 client machine --
> \\Server\Inpath\MO\Acks\AcksIncoming
```

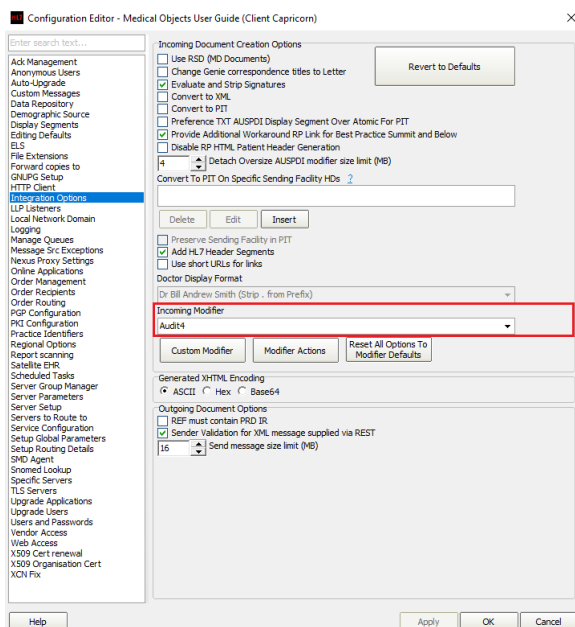
Note:



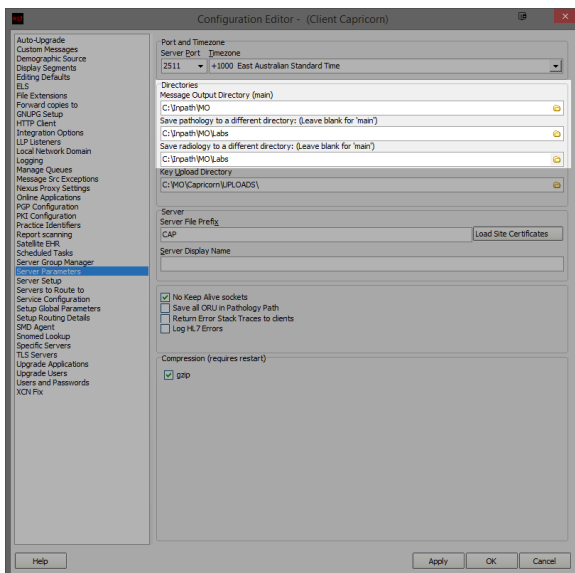
If the folder does not exist, you must create it.

## 3. Click on **Integration Options**.

### 3.1 Check that the **Incoming Modifier** is set to **Audit4**.



#### 4. Select Server Parameters from the left panel.



#### 5. The paths above are set as follows:

(Capricorn installed on an audit 4 server machine) -->

Message output

directory

\Inpath\MO\Letters

Save

pathology:

C:\Inpath\MO\Labs

Save

Radiology:

C:\inpath\mo\Labs

Capricorn installed on an Audit4 Client machine -->

Message output

directory

\\Server\Inpath\MO\Letters

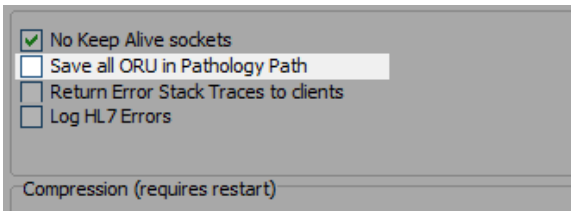
Save

Pathology

C:

```
\\Server\Inpath\MO\Labs
Save
Radiology
\\Server\Inpath\MO\Labs
```

6. Make sure that **Save All ORU In Pathology** path is **UNTICKED**.



Note:



If the folder does not exist, you must create it.

Note:



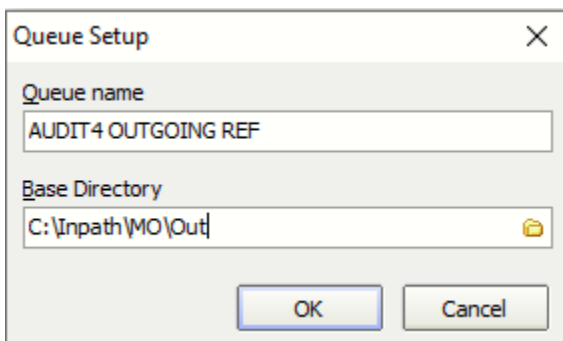
It is important that these folders only exist on one PC (Usually always the server) as they can cause conflicts.

7. Complete the **Manage Queues** section below.

## Current Manage Queues

### AUDIT4 OUTGOING REF

1. On the **Manage Queues** screen, click **Add**.
2. On the **Queue Setup** screen, name the queue and set its base directory.



3. Enter the details as outlined below.

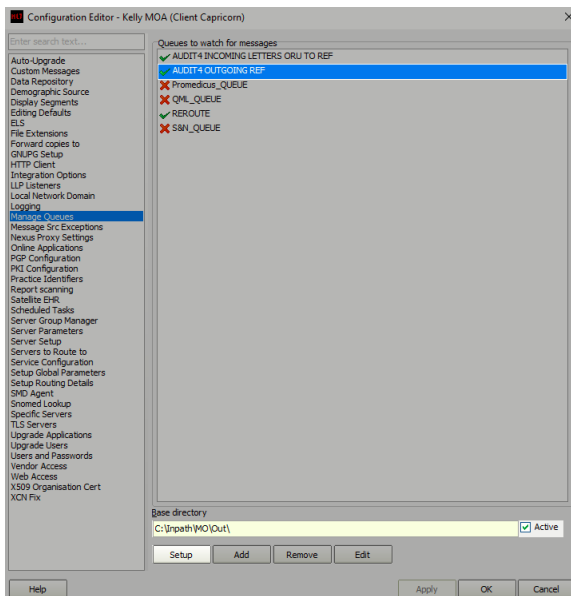
```
(Capricorn installed on an Audit4 server machine) -->

Queue name:                                AUDIT4
OUTGOING REF
Base Directory                             C:
\Inpath\MO\Out\

(Capricorn installed on an Audit 4 client machine) -->

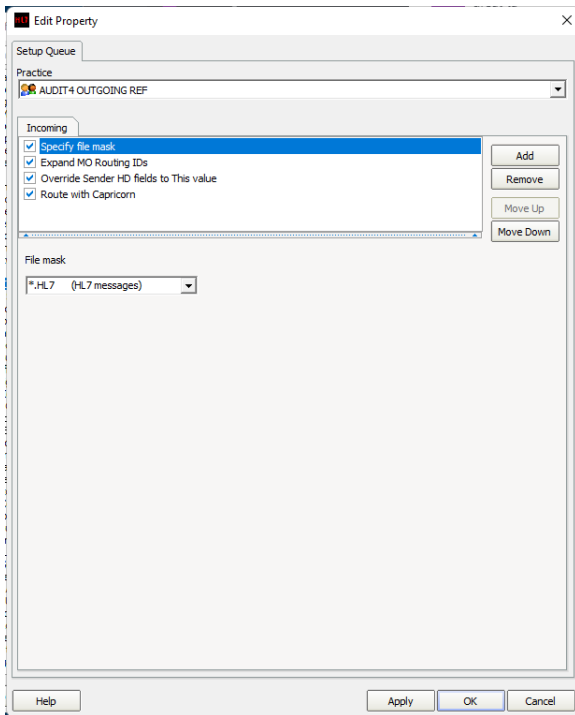
Queue name:                                AUDIT4
OUTGOING REF
Base directory:                            \\Server\Inpath\MO\Out\
```

4. Click **OK** on the queue setup, click the queue named **AUDIT4 OUTGOING REF** in the queues to watch for messages and click on **Setup** at the bottom of the configuration window.



5. On the right-hand side, click on **Add**. Select the decorators listed below in the order displayed and configure as specified on the right.

Specify file mask	-Set File Mask to *.
Hl7	
Expand MO Routing IDs	-No additional
settings.	
Override Sender HD fields to This value	-Tick "Use
Primary Practice Identifier"	
Route with Capricorn	-No additional
settings.	



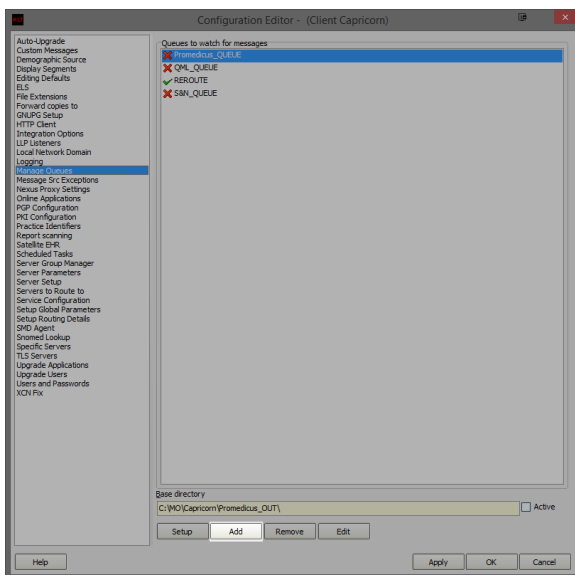
6. Click **Apply** and **OK** to save the **AUDIT4 OUTGOING REF** queue and return to the **Manage Queues** configuration screen.

## Historical Manage Queues

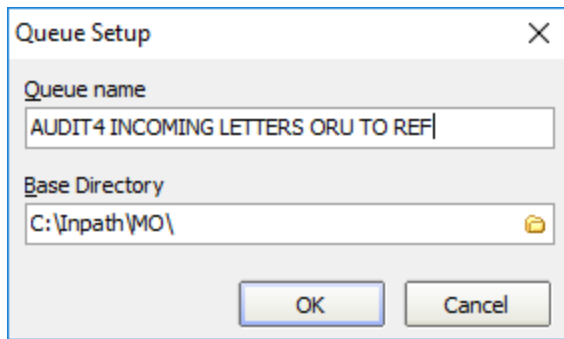
### AUDIT4 INCOMING LETTERS ORU TO REF

No longer required if Capricorn 3.2.5.36 and above in use.

1. Select **Manage Queues** from the left panel.



2. In the **Managed Queues** menu click **Add**.
3. The queue setup window will open.



Queue Setup

Queue name  
AUDIT4 INCOMING LETTERS ORU TO REF

Base Directory  
C:\Inpath\MO\

OK Cancel

4. Enter the details as outlined below.

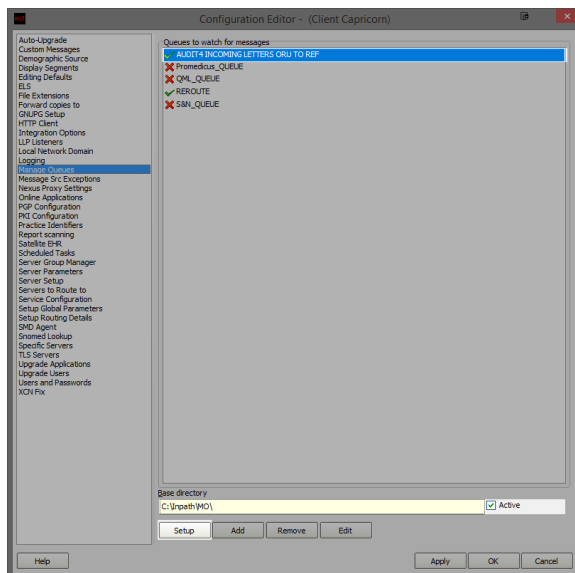
```
(Capricorn installed on an Audit4 server machine) -->

Queue name:                                AUDIT4 INCOMING
LETTERS ORU TO REF
Base Directory:                            C:\Inpath\MO\

(Capricorn installed on an Audit 4 client machine) -->

Queue name:                                AUDIT 4
INCOMING LETTERS ORU TO REF
Base Directory:                            \\Server\Inpath\MO\
```

5. Click **OK** on the queue setup, click the queue named **AUDIT4 INCOMING LETTERS ORU TO REF** in the queues to watch for messages and click on **Setup** at the bottom of the configuration window.



Configuration Editor - (Client Capricorn)

Auto-Upgrade  
Custom Messages  
Demographic Source  
Display Segments  
Editing Defaults  
EUS  
File Extensions  
Forward copies to  
GNUPG Setup  
HTTP Client  
Integration Options  
LLP Listeners  
Local Network Domain  
Logging  
**Queues to watch for messages**  
Message Src Exceptions  
Message Proxy Settings  
Online Applications  
PCR Configuration  
PDI Configuration  
Practice Identifiers  
Report scanning  
Satellite EHR  
Scheduled Tasks  
Server Group Manager  
Server Parameters  
Server Setup  
Servers to Route to  
Service Configuration  
Setup Global Parameters  
Setup Routing Details  
SPD Agent  
Snooped Lookup  
Specific Servers  
TLS Servers  
Upgrade Applications  
Upgrade Users  
Users and Passwords  
XON Fax

Queues to watch for messages

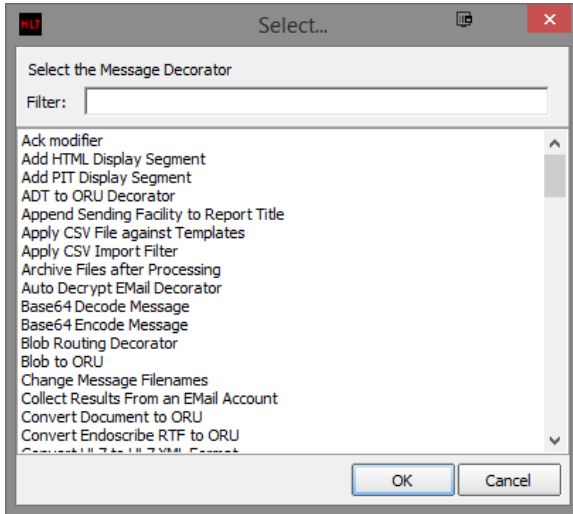
- ☒ AUDIT4 INCOMING LETTERS ORU TO REF
- ☒ Promedius\_QUEUE
- ☒ QAL\_QUEUE
- ☒ REROUTE
- ☒ SAN\_QUEUE

Base Directory  
C:\Inpath\MO\ ☒ Active

Setup Add Remove Edit

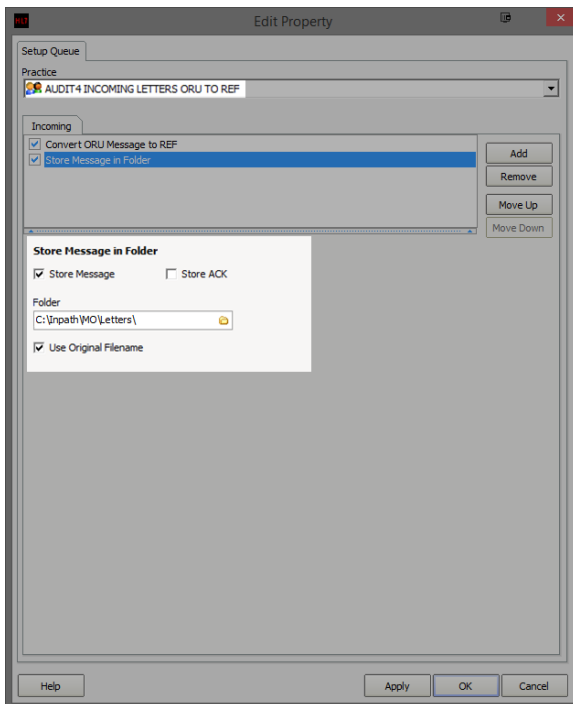
Help Apply OK Cancel

- In the edit property window, we are going to setup the queue to convert the letters from **ORU** to **REF** for Audit4 import. On the right hand side, click on **Add**.




Convert ORU Message to REF	No
additional settings.	
Store Message in Folder	Additional
settings required.	

- Once you have added both decorators you will need to supply additional configuration for the **Store Message in Folder**. Highlight the **Store Message in Folder** decorator on the edit property window. Notice that there are additional configuration options displayed below the decorator list. Make sure **Use Original Filename** is ticked.



- Leave the tick-box's on their default configuration and set the file path for the converted letters to be saved.

Note:

 This folder will not exist and will need to be created before setting the file path.



(Capricorn installed on an Audit 4 server)

Store Message in Folder C:  
\Inpath\MO\Letters\

(Capricorn installed on an Audit4 client machine)

Store Message in  
Folder  
\\Server\Inpath\MO\Letters\

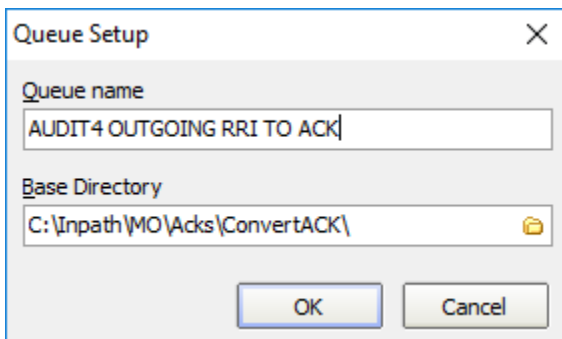
9. Click **Apply** and **OK** to save the **AUDIT4 INCOMING LETTERS ORU TO REF** queue and return to the **Manage Queues** configuration screen.

## AUDIT4 OUTGOING RRI TO ACK

No longer required if Capricorn 3.2.13.61 and above in use.

On the **Manage Queues** screen, click **Add**.

1. On the **Queue Setup** screen, name the queue and set its base directory.



The image shows a 'Queue Setup' dialog box with a close button (X) in the top right corner. It contains two text input fields. The first field is labeled 'Queue name' and contains the text 'AUDIT4 OUTGOING RRI TO ACK'. The second field is labeled 'Base Directory' and contains the path 'C:\Inpath\MO\Acks\ConvertACK\'. Below the fields are two buttons: 'OK' and 'Cancel'.

(Capricorn installed on an Audit4 server machine) -->

Queue name: AUDIT4  
OUTGOING RRI TO ACK  
Base Directory: C:  
\Inpath\MO\ACKs\ConvertACK

(Capricorn installed on an Audit 4 client machine) -->

Queue name: AUDIT4  
OUTGOING RRI TO ACK  
Base directory:  
\\Server\Inpath\MO\ACKs\ConvertACK

Note:



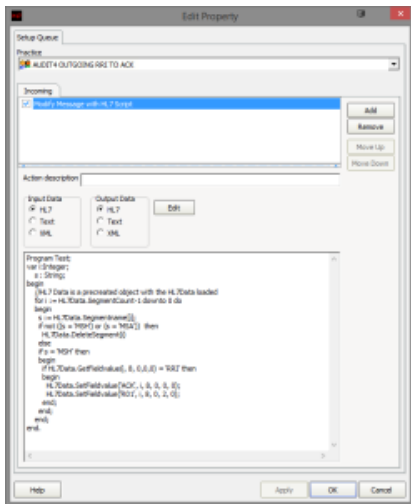
The folder **ConvertACK** will not exist and will need to be created before setting the file path.

2. Select **AUDIT4 OUTGOING RRI TO ACK** from the **Queues to Watch for Messages** and click **Setup**.
3. Select **Add** from the right side of the **Edit Properties** window.
4. You can search the decorators by typing in their name when one of the decorators is highlighted.

Modify message with HL7 script. - Additional settings required.  
Store message In folder - addition settings required.

5. In the **Edit Properties**, we need to add the HL7 Script to the **Modify Message with HL7 Script** configuration section.
6. You must paste the script exactly as shown below into the text box in the modifiers configuration. Be sure there are no extra spaces or empty lines at the top.

HL7 Script.

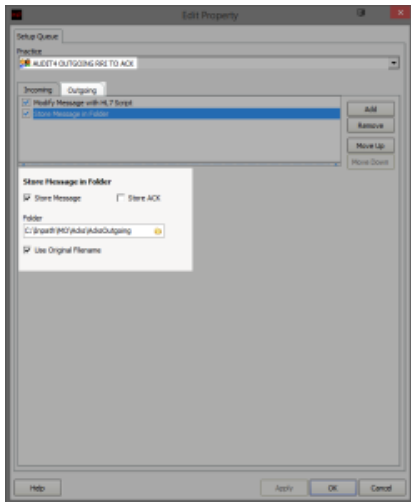


```

Program Test;
var i:Integer;
    s : String;
begin
    //HL7 Data is a precreated object with the HL7Data loaded
    for i := HL7Data.SegmentCount-1 downto 0 do
    begin
        s := HL7Data.Segmentname[i];
        if not ((s = 'MSH') or (s = 'MSA')) then
            HL7Data.DeleteSegment(i)
        else
            if s = 'MSH' then
                begin
                    if HL7Data.GetFieldvalue(i, 8, 0,0,0) =
'RR1' then
                        begin
                            HL7Data.SetFieldvalue('ACK', i, 8,
0, 0, 0);
                            HL7Data.SetFieldvalue('R01', i, 8,
0, 2, 0);
                        end;
                    end;
                end;
            end;
        end.
    end.

```

7. If you haven't already, you will need to add the **Store Message in Folder** Decorator to the **AUDI T4 OUTGOING RRI TO ACK** Queue.



(Capricorn installed on a Audit4 Server Machine) -->

Store Message in Folder: C:  
 \Inpath\MO\ACKs\ACKsOutgoing

(Capricorn installed on a Audit4 Client Machine) -->

Store Message in Folder:  
 \\Server\Inpath\MO\ACKs\ACKsOutgoing

8. Click **Apply** and **OK** to save the **AUDIT4 OUTGOING RRI TO ACK** Queue and return to the **Ma**  
**nage Queues** configuration Screen.
9. Click **Apply** and **OK** to save the current configuration and to exit the Capricorn configuration  
 editor.

You have now completed the configuration for the Medical Objects Capricorn to download and  
 send acknowledgements.

## Software for Specialists (Audit4) Configuration.

You will need to contact the Software4Specialist Help-Desk so that they can configure Audit4 to Import  
 the Letters and Lab results and the export of Acknowledgments.

Department: Support  
 Contact Number: 1300 133 308  
 Organisation: Software for Specialists (Audit4)

Audit4 will require the following Configuration:

1. Letters are to be imported from: **C:\Inpath\MO\Letters**  
 Previously this was the path defined by the **Convert Letters to REF** queue's **Store Message**  
**in folder** decorator.
2. Lab results are to be imported from: **C:\Inpath\MO\Labs**
3. Acknowledgements are to be exported to: **C:\Inpath\MO\ACKs\ACKsOutgoing**  
 Previously this was the path defined by the **Base directory** for the **ConvertACK** Queue.

(Capricorn installed on a Audit4 Server Machine) -->

i.        Store Message in Folder:                    **C:\Inpath\MO\Acks**

(Capricorn installed on a Audit4 Client Machine) -->

ii.       Store Message in Folder:                    **\\Server\Inpath\MO\Acks**

19. Click **Apply** and **OK** to save the **Convert Acks** Queue and return to the Managed Queue configuration Screen.

20. Click **Apply** and **OK** to save the current configuration and to exit the Capricorn configuration editor.

You have now completed the configuration for the Medical Objects Capricorn to download and send acknowledgements.