

Creating Patient Result Graphs

Overview

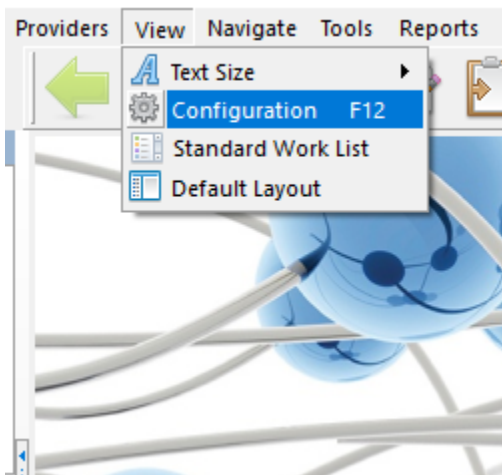
This guide provides a brief overview on Creating Patient Results Graphs within the Medical-Objects Explorer (Meridian).

If you require any assistance with the installation or configuration, or if you have any questions, please contact the Medical-Objects Helpdesk on (07) 5456 6000.

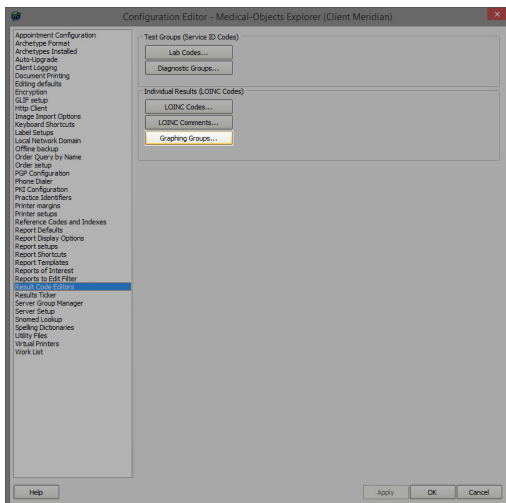
- 1 [Overview](#)
- 2 [Creating Patient Results Graphs](#)

Creating Patient Results Graphs

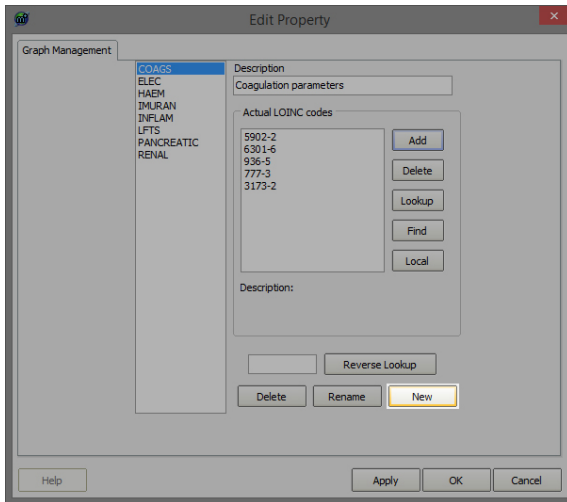
1. To create a Graph, select **Configuration** from the **View** Menu or press **F12**.



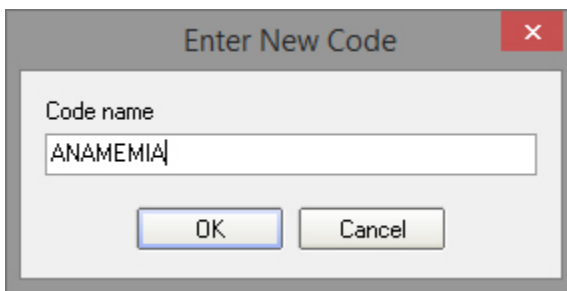
2. In the **Configuration Editor**, select Result Code Editors from the left hand side and click the Graphing Groups button:



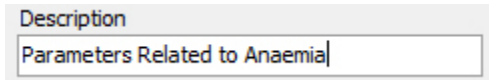
3. On the **Edit Property** screen click the **New** button:



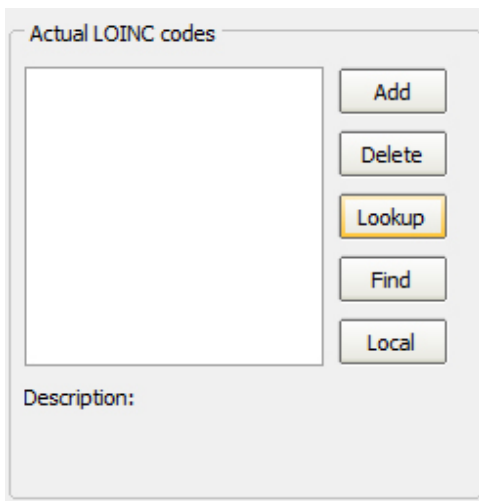
4. Enter the Graph Code:

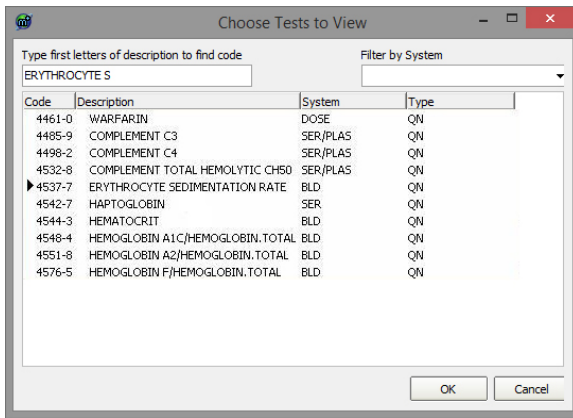


5. Enter the Description for the Graph

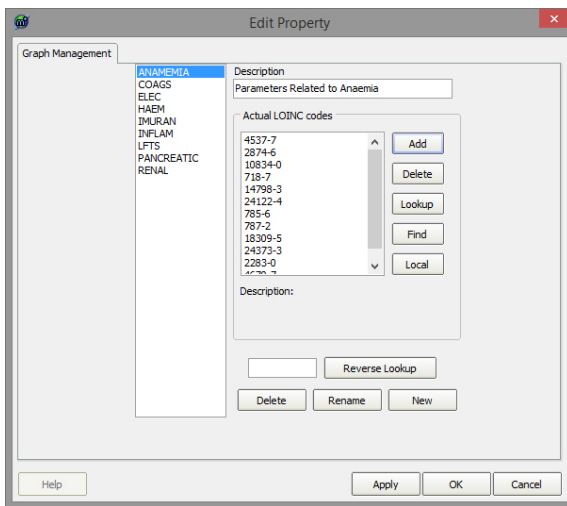


6. Click the **Lookup** button to search for the LOINC Codes to add.

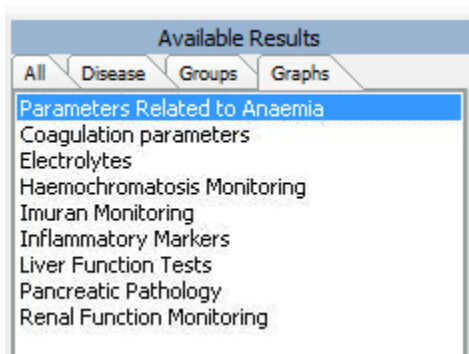




- Enter the Description, or part thereof in the search box on the top of the screen and click **OK**.
- Continue adding LOINC Codes to appear in the Graph by clicking the **Lookup** button. The example below shows six Pancreatic LOINC Codes added to the Graph:



- The **Result Graph** now exists under the Graphs tab in **Available Results**:



- The following Report is produced:

Patient: BUDERIM QLD 4573 AU												
Male DOB: 27/02/1972 Age: Y31												
Show Actual Date Scale Hide Graph												
	2002	2002	2002	2002	2002	2002	2002	2002	2002	2002	2002	20
	22.06	24.06	25.06	02.07	05.07	07.07	09.07	12.07	14.07	15.07	17.07	20
	12:20	06:20	08:00	06:35	08:15	06:20	09:20	06:20	12:30	07:10		06
Neutrophils	12.6 ++	9.6 +		13.3 ++	5.7	4.2	6.4	6.5	11.1 ++	5.0	5.0	5.0
Mean Cell Haemoglobin	30	31		30	30	31	31	31	31	31	31	31
Mean Cell Volume	88	88		89	89	89	91	91	91	91	92	93
Haemoglobin	159	122 -		123 --	98 --	101 -	88 ---	94 ---	106 --	105 --	98 --	85
Iron	9 -	7 --		7 --	3 ---	3 ---	5 --	5 --	7 --	2 ---	8 -	2 -
Globulins	35	22		26	20	21	26	31	30	26	24	24
Erythrocyte Sedimentation Rate	33 +	44 +		69 ++	80 ++	90 +++	113 +++	111 +++	109 +++	117 +++	110 +++	110
Leucocytes (Urine)				20								
Serum Ferritin Assay								1189	+++			
Transferrin Saturation								16				
Red Cell Folate Assay								660				
Nucleated Red Cells												

Globulins	35	22	26	20	21	26	31	30	26	24
Erythrocyte Sedimentation Rate	33	+	44	+	69	++	80	++	90	+++
Leucocytes (Urine)			20							
Serum Ferritin Assay							1189	+++		
Transferrin Saturation							16			
Red Cell Folate Assay							660			
Nucleated Red Cells										

