

MediNet

Overview:

This guide provides instruction on configuring both Medical-Objects Capricorn and MediNet software to import electronic results.

If you require any assistance with the installation or configuration, or if you have any questions, please contact the Medical-Objects Helpdesk on (07) 5456 6000.

If you have not Installed the Medical-Objects Download client, Please see the guide for [Installing Capricorn on Windows](#).

- 1 [Overview:](#)
- 2 [Configuring Capricorn Software](#)
 - 2.1 [Accessing the Capricorn Configuration Window](#)
 - 2.2 [Capricorn Configuration Settings](#)

Configuring Capricorn Software

Accessing the Capricorn Configuration Window

Note:



In some cases, the Capricorn may be configured as a service. See [this guide](#) for instructions on how to launch the Capricorn if it is set up as a service.

1. To launch the HL7 Tray application, Go to **Start Menu, All Programs, Medical-Objects** and select the **Medical-Objects Capricorn**. Alternatively, You can go to **C:\MO\Capricorn** and run the **Capricorn.exe**.
2. The following icon will appear in the tray. Double click on it to bring up the log window.

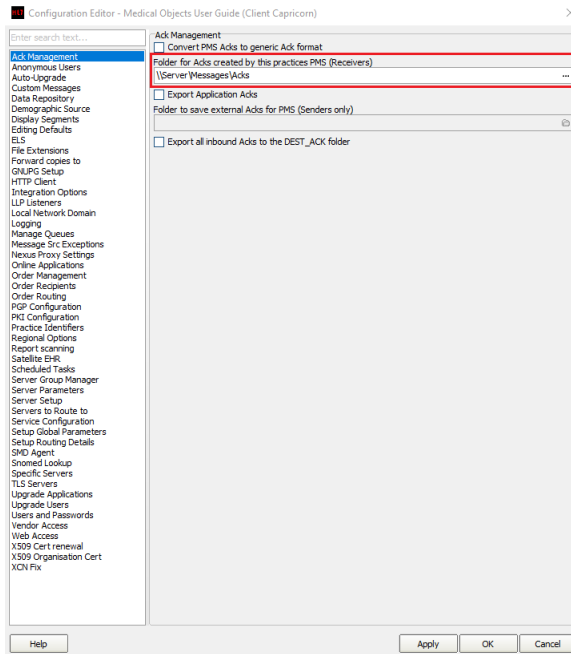


3. When the log window is displayed, Click on the **Configuration** icon highlighted below, or select **Utility** and select **Configuration**.



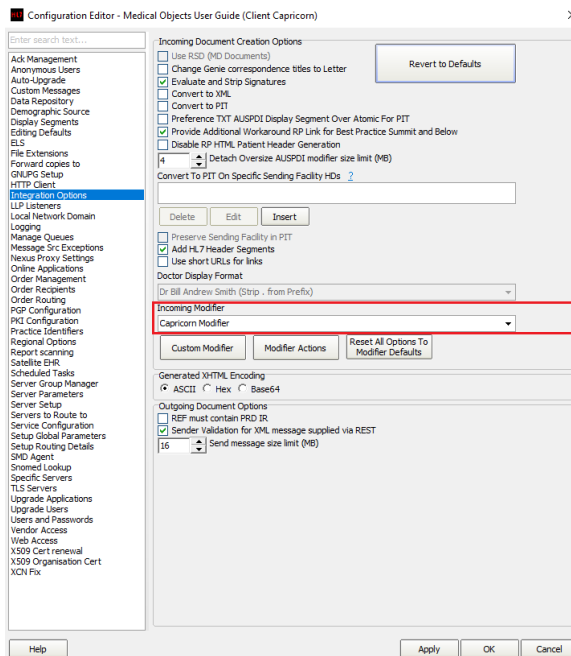
Capricorn Configuration Settings

1. Click on **Ack Management**.

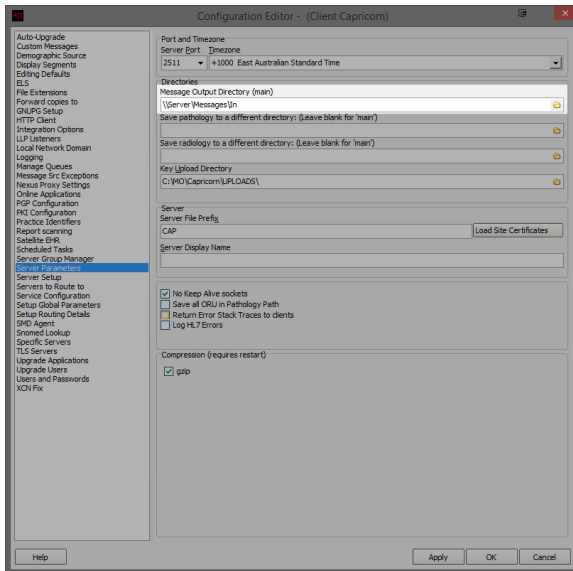


2. Make sure the **Ack Management** path is set to the messages folder in MediNet. For this example we will use \\Server\Messages\Acks

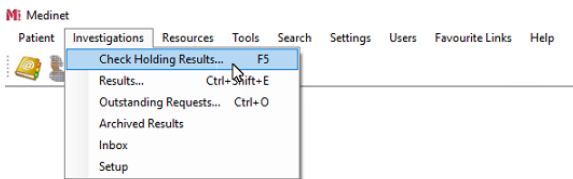
3. Click on **Integration Options**.
Make sure the **Incoming Modifier** is set to **Capricorn Modifier**



4. Click on **Server Parameters** from the Left hand panel.



5. Make sure the **Message Output Directory** is set to the Messages folder - for example **\\Server\Messages\In**
6. Medinet should import Automatically. To import manually, Select the **Investigations** menu, and click **Check Holding Results**.



7. This will open the Holding Files. Any imported messages will be displayed here.

