

BreastScreen NSW Acknowledgements

1 Overview

2 Configuration


2.1 Ack Path

2.2 Capricorn Configuration Settings

Overview

This article is for customers of BreastScreen NSW and Best Practice. The focus of this article is configuring practice software result import acknowledgements to BreastScreen NSW so they know Best Practice has imported the messages.

Configuration

This is no longer needed if you have 1.11.1.934 and above of BP and have set up importing per the new  instructions [here](#).

Ack Path

Note:



In some cases, the Capricorn may be configured as a service. See [this guide](#) for instructions on how to launch the Capricorn if it is set up as a service.

1.

To launch the HL7 Tray application, Go to **Start Menu, All Programs, Medical-Objects** and select the **Medical-Objects Capricorn**. Alternatively, You can go to **C:\MO\Capricorn** and run the **Capricorn.exe**.
2.

The following icon will appear in the tray. Double click on it to bring up the log window.



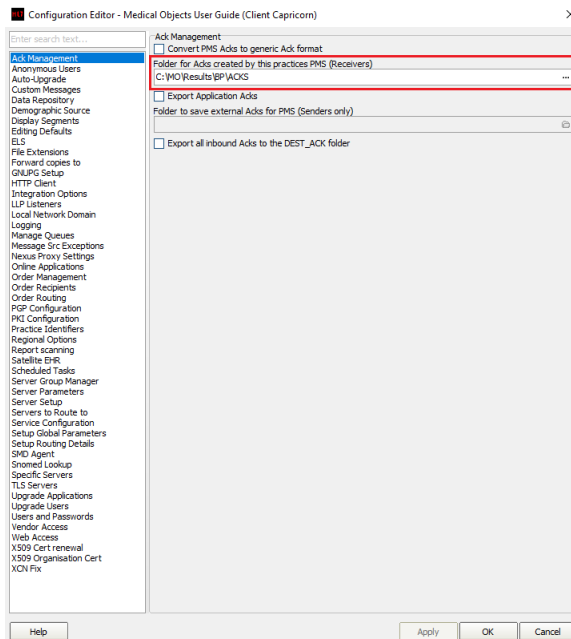
3.

When the log window is displayed, Click on the **Configuration** icon highlighted below, or select **Utility** and select **Configuration**.



Capricorn Configuration Settings

1. Click on **Ack Management**.



2. Note the path set in **ACK Management**.

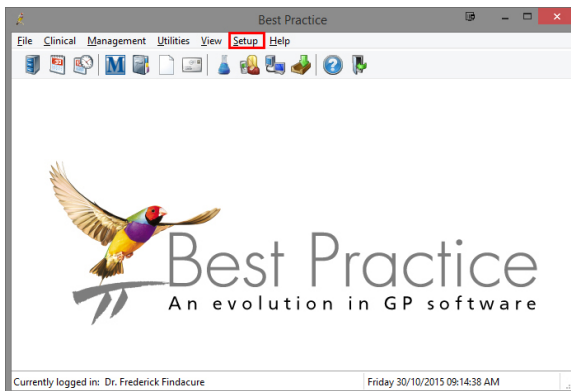
Note:



If the folder does not exist, you must create it. Normally the default is C:\MO\Results\BP\Acks.

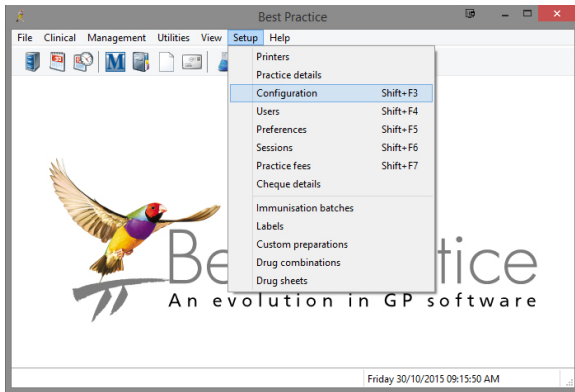
Make sure the results folder has **Modify**, **Read** and **Write** permissions, **AND** is shared on the Network.

3. Open the Best Practice software.

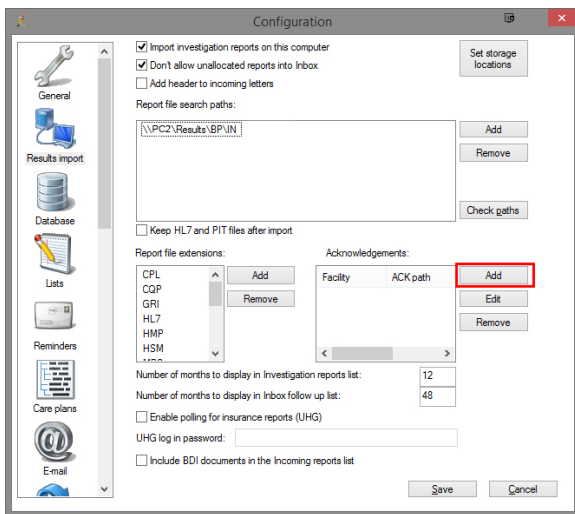


4. Click **Setup** from the toolbar shown above.

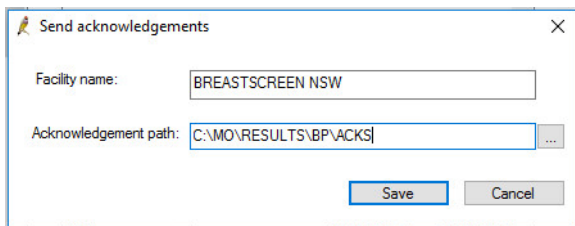
5. Click on **Configuration** from the drop down menu.



6. The **Configuration** window should be displayed.
7. Select **Results Import** from the left panel.
8. Select the **Add** button under **Acknowledgements** shown below.

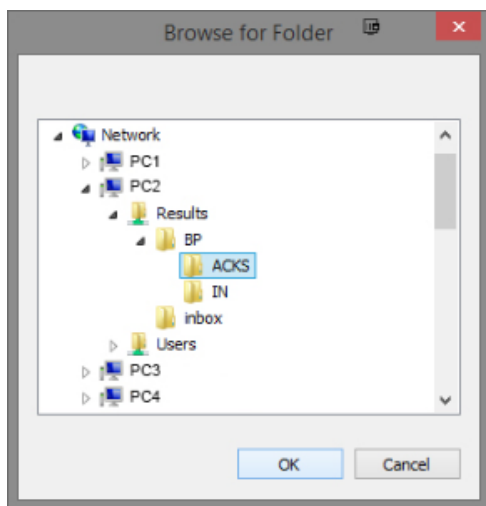


9. The **Send Acknowledgements** window will appear.
10. Add **BreastScreen NSW** as the Facility name (include the space).



11. Click the **file browse** button to select the folder that was configured in Medical-Objects Capricorn in step 2. If you know what a UNC path is; then it is advised you use a **UNC path** version if you know it for the folder noted in step 2.

eg: \\PC3\Results\BP\Acks



12. Once you have selected the path click **OK**.
13. Exit the configuration confirming that you have made changes. Best Practice should now return the acknowledgements that BreastScreen NSW require.