

Communicare

Overview

This guide provides a basic overview of configuring the Medical-Objects Download client (Capricorn) to drop off results for Communicare.

If you require any assistance with the installation or configuration, or if you have any questions, please contact the Medical-Objects Helpdesk on (07) 5456 6000.

If you have not Installed the Medical-Objects Download client, Please see the guide for [Installing Capricorn on Windows](#).

Communicare IT support: (08) 6212 6900

communicare@healthconnex.com.au

Warning



Supplying messages as PIT has been reported as having issues. The integration has been revised with Communicare and you may need an update of your configuration. Please contact Medical Objects if you have any questions or concerns.

Configure the Capricorn software

Accessing the Capricorn Configuration Window

1. To launch the HL7 Tray application, Go to **Start Menu, All Programs, Medical-Objects** and select the **Medical-Objects Capricorn**. Alternatively, You can go to **C:\MO\Capricorn** and run the **Capricorn.exe**.
2. The following icon will appear in the tray. Double click on it to bring up the log window.



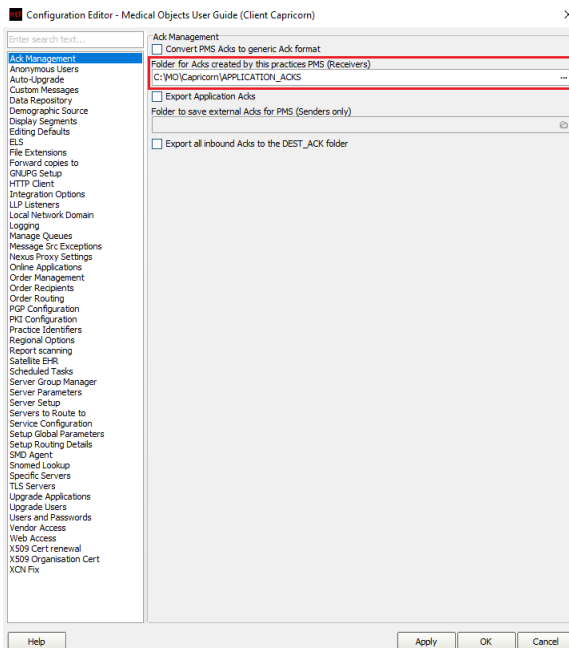
3. When the log window is displayed, Click on the **Configuration** icon highlighted below, or select **Utility** and select **Configuration**.



Capricorn Configuration Settings

1. Click on **Ack Management**.

- 1 [Overview](#)
- 2 [Configure the Capricorn software](#)
 - 2.1 [Accessing the Capricorn Configuration Window](#)
 - 2.2 [Capricorn Configuration Settings](#)



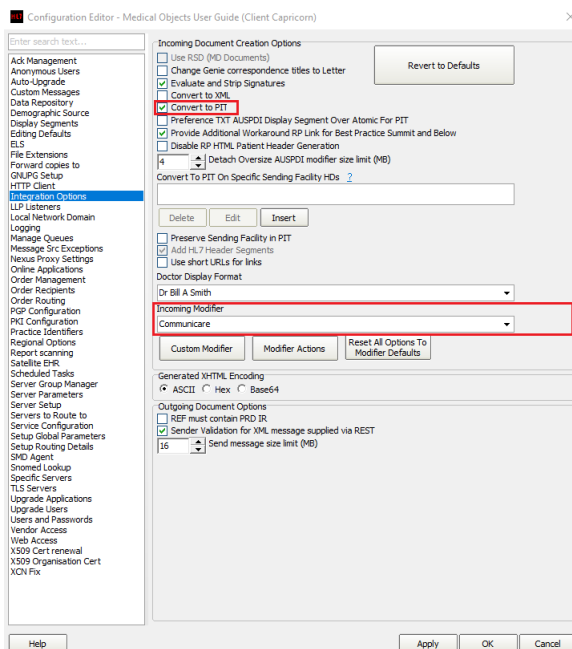
2. Set the **ACKManagement** Path to the following path:

C:\MO\Capricorn\APPLICATION_ACKS

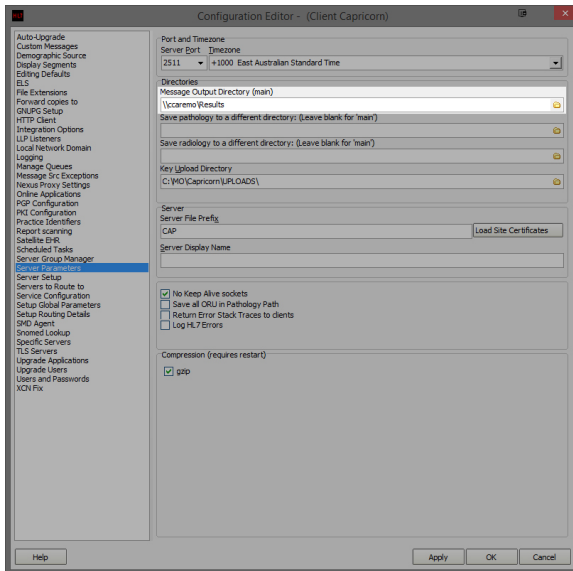
3. Click on **Integration Options**.

- 3.1 Check that the **Incoming Modifier** is set to **Communicare Modifier**.

PLEASE NOTE: Convert to PIT should **NOT** be ticked if you have Communicare 20.2 or higher.



4. Select **Server Parameters** from the left panel.



5. Here you can set the **Message Output Directory (main)**. This will be a shared file path on the server machine that has been set up by Communicare. For this example, We will use the following path.

\\ccaremo\Results

6. The configuration is complete. Click **Apply** and **OK**.