

# Stat Health

Messages marked as 'Compliant Display' are those that are completely within the standard. Messages

## Overview

This guide provides instruction on configuring both Medical-Objects Capricorn and Stat Health software to import electronic results.

If you require any assistance with the installation or configuration, or if you have any questions, please contact the Medical-Objects Helpdesk on (07) 5456 6000.

If you have not Installed the Medical-Objects Download client, Please see the guide for [Installing Capricorn on Windows](#).

Note:



Please note that you will need to contact Stat Health's helpdesk to setup configuration within their software. Stat Health helpdesk: 1300 007 828

## Configuring Capricorn Software

### Accessing the Capricorn Configuration Window

Note:



In some cases, the Capricorn may be configured as a service. See [this guide](#) for instructions on how to launch the Capricorn if it is set up as a service.

1. To launch the HL7 Tray application, Go to **Start Menu, All Programs, Medical-Objects** and select the **Medical-Objects Capricorn**. Alternatively, You can go to **C:\MO\Capricorn** and run the **Capricorn.exe**.
2. The following icon will appear in the tray. Double click on it to bring up the log window.



3. When the log window is displayed, Click on the **Configuration** icon highlighted below, or select **Utility** and select **Configuration**.

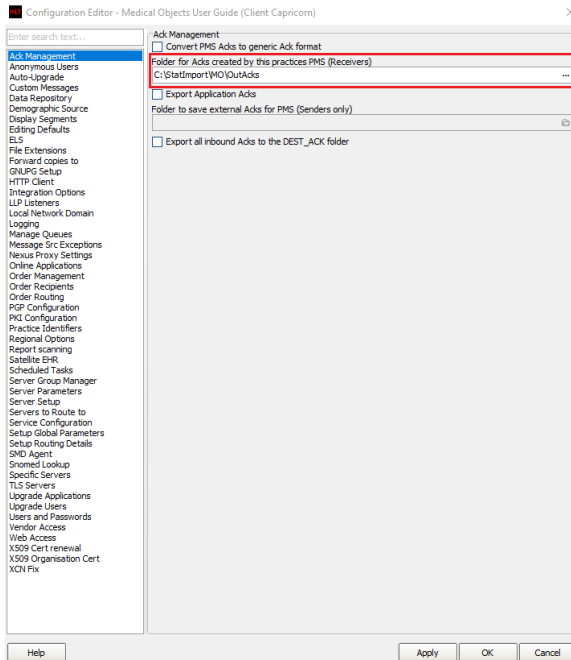


### Capricorn Configuration Settings

1. Click on **Ack Management**.

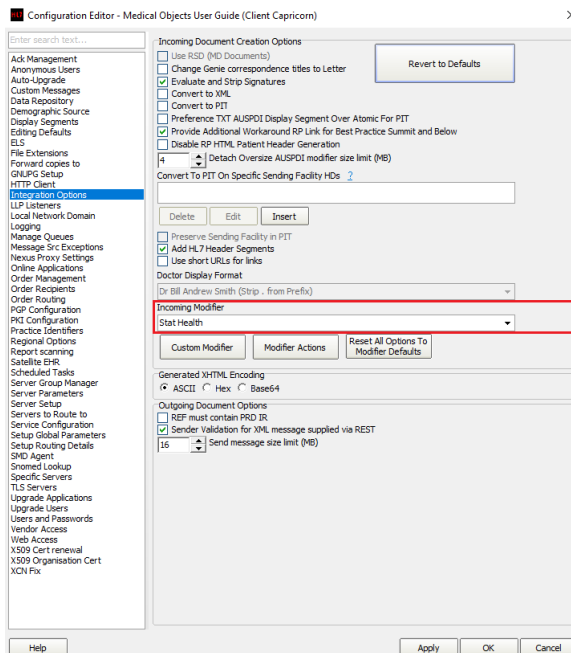
- 1 [Overview](#)
- 2 [Configuring Capricorn Software](#)
  - 2.1 [Accessing the Capricorn Configuration Window](#)
  - 2.2 [Capricorn Configuration Settings](#)
- 3 [Stat Health 3.11 Manual Match](#)
- 4 [Stat Health Configuration](#)

## 2. Set the **Application Acks** path to **C:\StatImport\MO\OutAcks**



## 3. Click on **Integration Options**.

### 3.1 Check that the **Incoming Modifier** is set to **Stat Health**.



## 4. Select **Server Parameters** from the left hand Panel. Set the **Message Output Directory** as shown below.

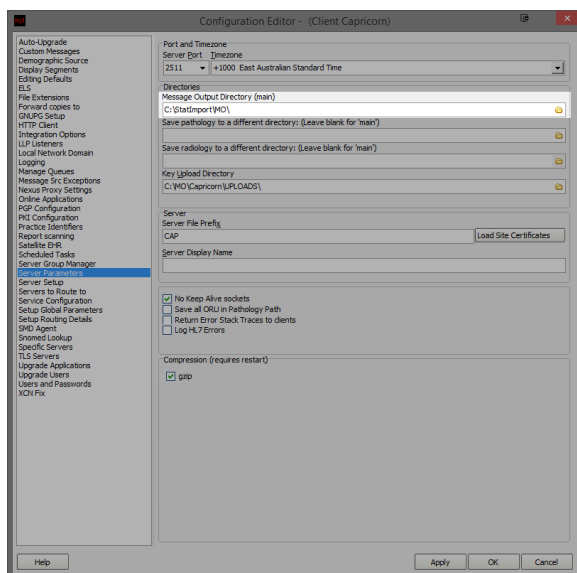
Incoming (Main): C:\StatImport\MO\

Note:

For Precision IT, This file path may be different.

C:\StatImport\clinicalmessages\MO\

Please check that the folders **Import** and **FailedImport** are already in the directory to confirm.



Click **Apply** and **OK** to save your configuration.

Note:



Please note that Pathology and Radiology Reports will be separated from within the Stat health Program. All that is required is for the required contacts to be set up in the Address book. This is something Stat health handles when they do their configuration.

## Stat Health 3.11 Manual Match

If your practice is receiving messages that Stat Health is now flagging as "Not compliant", you will need to contact us and advise that the message is not meeting the requirements set out by Stat Health. Medical Objects will supply an update which should resolve this issue.

## Stat Health Configuration

Once the Capricorn configuration is complete, Stat Health will need to be contacted to complete the configuration within the software. Stat Health's Helpdesk can be contacted on 1300 007 828. Please also see [Stat Health's Support Page](#) for more information.