

Mediflex

Overview:

This guide provides a basic guide on configuring both Medical-Objects Capricorn and Mediflex software to import electronic results.

If you require any assistance with the installation or configuration, or if you have any questions, please contact the Medical-Objects Helpdesk on (07) 5456 6000.

If you have not Installed the Medical-Objects Download client, Please see the guide for [Installing Capricorn on Windows](#).

- 1 [Overview:](#)
- 2 [Configuring Capricorn Software](#)
 - 2.1 [Accessing the Capricorn Configuration Window](#)
 - 2.2 [Capricorn Configuration Settings](#)
- 3 [Mediflex configuration](#)
- 4 [Importing into Mediflex](#)

Configuring Capricorn Software

Accessing the Capricorn Configuration Window

Note:



In some cases, the Capricorn may be configured as a service. See [this guide](#) for instructions on how to launch the Capricorn if it is set up as a service.

1. To launch the HL7 Tray application, Go to **Start Menu, All Programs, Medical-Objects** and select the **Medical-Objects Capricorn**. Alternatively, You can go to **C:\MO\Capricorn** and run the **Capricorn.exe**.
2. The following icon will appear in the tray. Double click on it to bring up the log window.



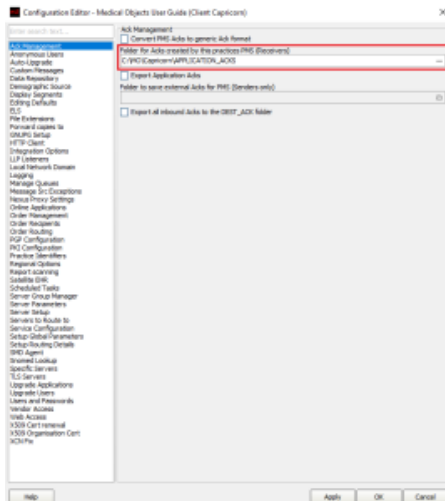
3. When the log window is displayed, Click on the **Configuration** icon highlighted below, or select **Utility** and select **Configuration**.



Capricorn Configuration Settings

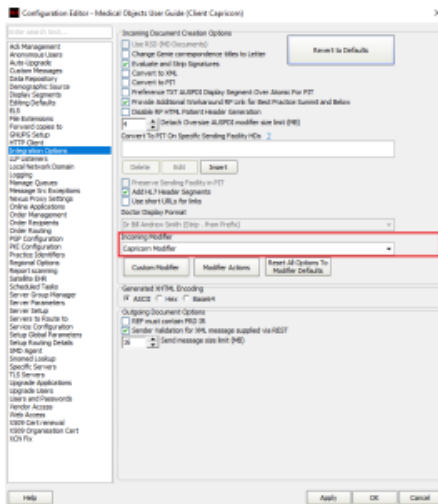
1. Click on **Ack Management**.

2. Set the Ack Management path to C:\MO\Capricorn\APPLICATION_ACKS



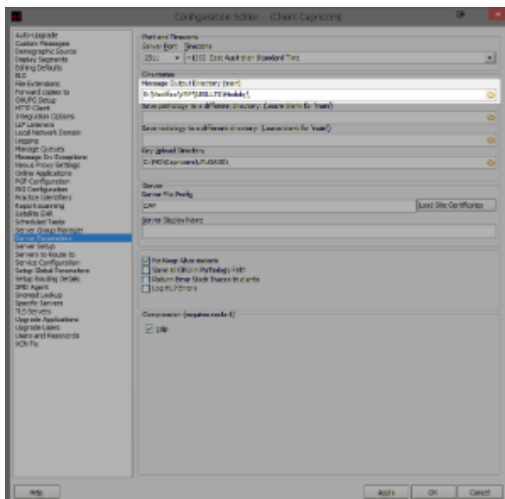
3. Click on Integration Options.

3.1 Make sure the Incoming Modifier is set to Capricorn Modifier.



4. Select Server Parameters from the left hand window.

5. Set the Message Output Directory to the drive Mediflex is installed on to. The folder will look similar to the following.



E:\Mediflex\VMF\RESULTS\Medobj\

Note:



You may have to create the **Medobj** folder.

6. Select **Apply** and **OK** to save your settings.

Mediflex configuration

1. Within Mediflex, Select the red **Address Book** from the top Toolbar.
2. Under the **Laboratories** section, Add the code **MEDOB** and input the details required for Medial-Objects. Set the directory to the path created earlier.

E:\Mediflex\VMF\RESULTS\Medobj\

3. Save and close.

Importing into Mediflex

Note:



Please note that Mediflex does not work with PDF's, and all results will have to be manually imported

Go to the clinical option in the toolbar and select **In Tray**. This is where results will appear. If they do not, They'll be under the **Mailbox** option.