

Logging in and Out

Overview

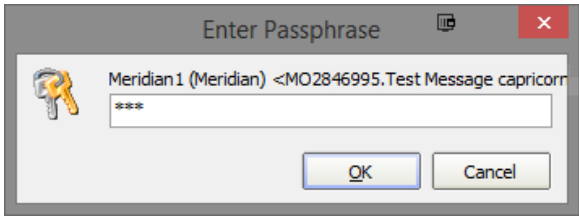
This guide provides a brief overview on logging in and out of the Medical-Objects Explorer (Meridian).

If you require any assistance with the configuration, or if you have any questions, please contact the Medical-Objects Helpdesk on (07) 5456 6000.

- 1 [Overview](#)
- 2 [Logging in](#)
- 3 [Changing your password](#)
- 4 [Logging out](#)

Logging in

The Explorer client will ask for a Passphrase when you open the application. You will be greeted with the following window.



Enter your passphrase, and click OK to continue.

Note:



If you have forgotten your password, It cannot be recovered. Please contact the Medical-Objects Helpdesk to arrange a re-install of your software.

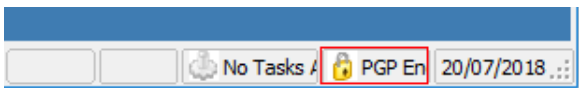
The Medical-Objects Explorer Client will automatically log you out after 20 minutes for security reasons. [This guide](#) will explain how to make that time longer or shorter. Please note that changing this value is **NOT** recommended.

Changing your password

Once you have logged in, You can change your password if you wish. *You can only change your password if you know what the current password is.*

If you do not remember your passphrase, you will need to reinstall the software. Please contact the Medical-Objects Helpdesk for assistance with this.

Double click the PGP encrypted heading on the bottom right hand corner.



Select **Change Passphrase**.

Meridian1 (Meridian)

Key ID: Created: 30 Jul 2015

Key Type: Expires: Never

Key Size: 1024 Cipher: IDEA

Trust Model

Validity: Complete Invalid Valid

Trust: Ultimate Untrusted Trusted

☒ Implicit Trust

Fingerprint:

☒ Key Enabled

Change Passphrase... Close

Enter your current password. You will need to enter your new password in the **New passphrase** box and the **Confirm** box. Select **OK** when completed.

Change Passphrase

Current passphrase:

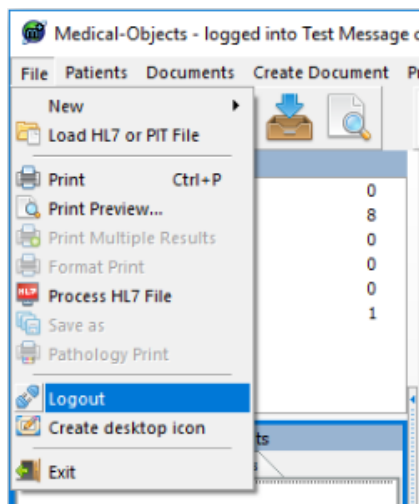
New passphrase:

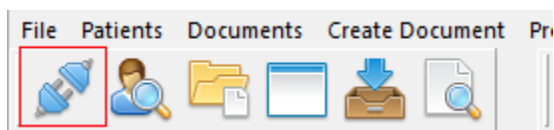
Confirm:

OK Cancel

Logging out

To log out of the Explorer client, You can go to **File** and select **Logout** - or click the open door icon.





To log back in again, Select **File** and click on **Login** or click the **Login** icon - You will be asked to enter your passphrase again.