

Installing Explorer on MAC with Crossover - For older versions of Equator only

- 1 Overview
- 2 Installing Crossover
- 3 Creating a backup
- 4 Starting Medical Objects Explorer

Overview

Crossover is an application that allows Windows based programs to function in a Mac environment. This guide explains how to set up the Crossover Application to work with the Medical-Objects Explorer.

If you have any issues with the installation or require any further assistance, Please contact the Medical-Objects Helpdesk on (07) 5456 6000.

Note:



Please use the setup .exe from the below link

[MACMeridian-Setup.exe](#)

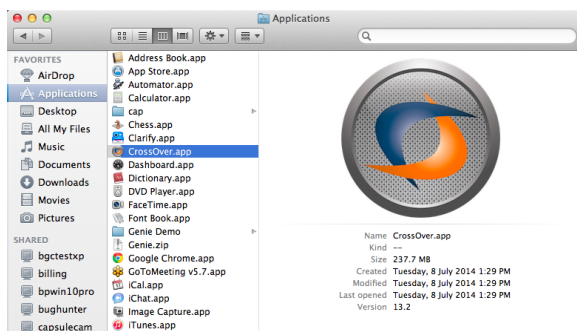
Installing Crossover

Note:

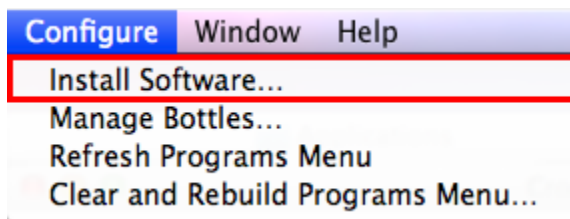


A free version can be obtained and used for 14 days before paid registration by the customer. <https://www.codeweavers.com/products/>

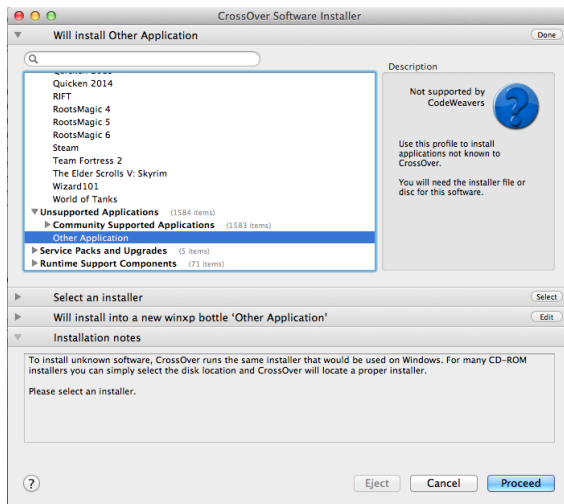
1. Run CrossOver from the **Applications** Draw.



2. Go to the top of the screen and choose **Configure>Install Software**



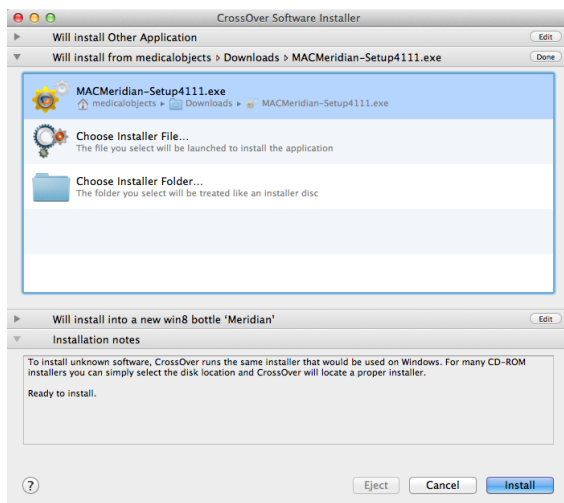
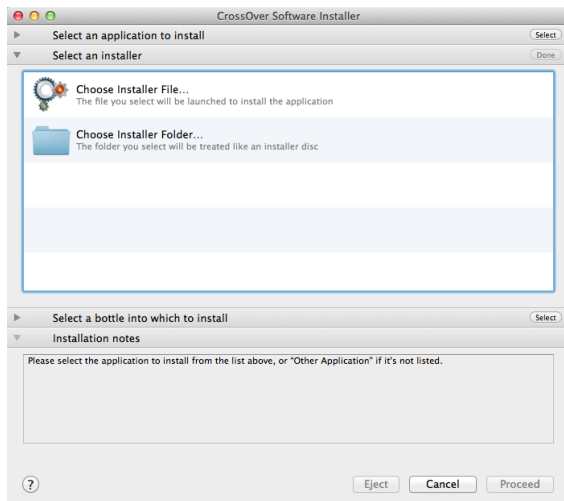
3. Under **Will install Other Application** choose **Unsupported Applications>Community Supported Applications>Other Application**



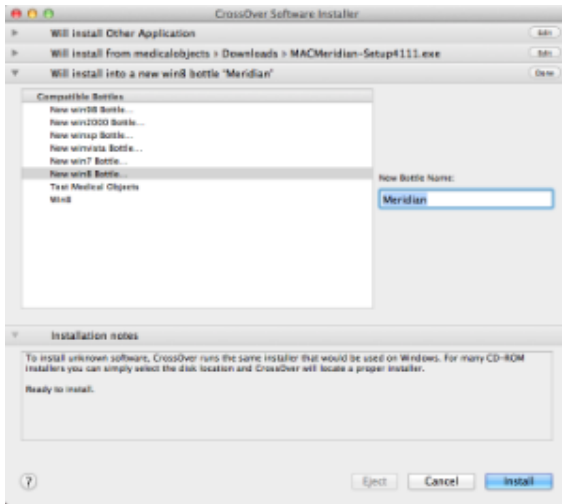
4. Choose your Explorer installer from the location that you saved it in.

Note:

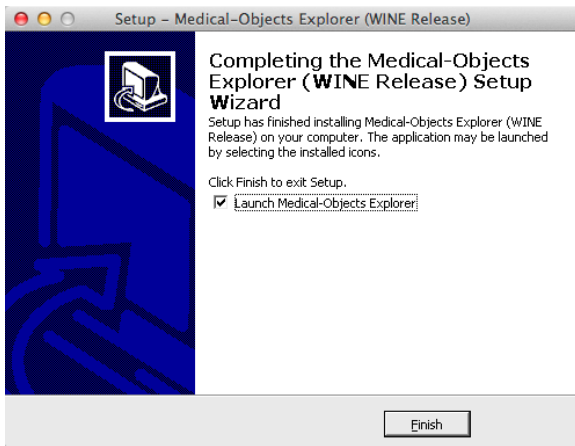
A Special build of Explorer is required for installation in Crossover. Please contact the Medical-Objects Helpdesk (07) 5456 6000.



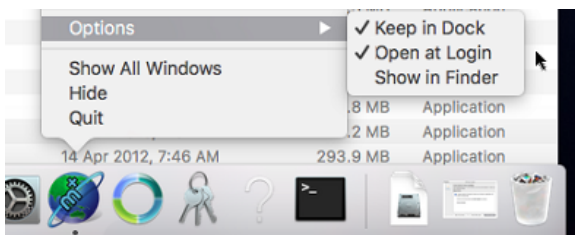
5. Choose to install in a **New Win8 bottle**. Give the bottle a name. Meridian (Or Explorer) is fine in this instance. Click **Proceed** at the bottom of the window.



6. Follow the installer through as per a normal Explorer install. Select Finish in the installer and ensure that **Launch Medical-Objects Explorer** is checked.



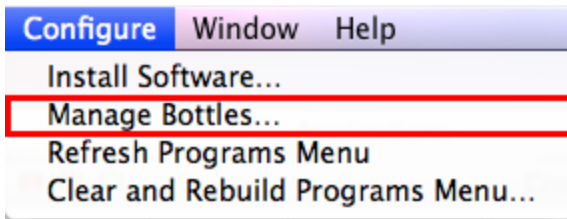
7. When the Explorer software is running, Right Click the Explorer icon in the Dock.
8. Expand the Options menu and click **Keep in Dock**.



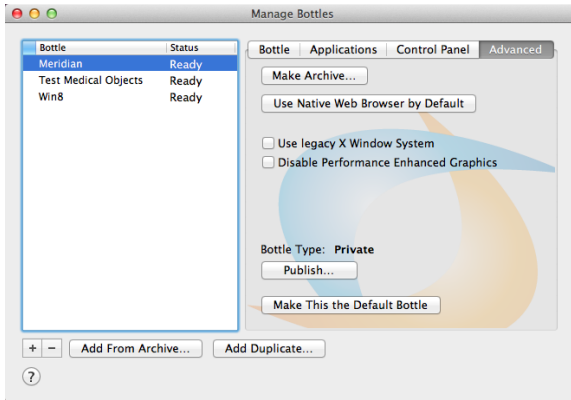
9. The setup is now complete.

Creating a backup

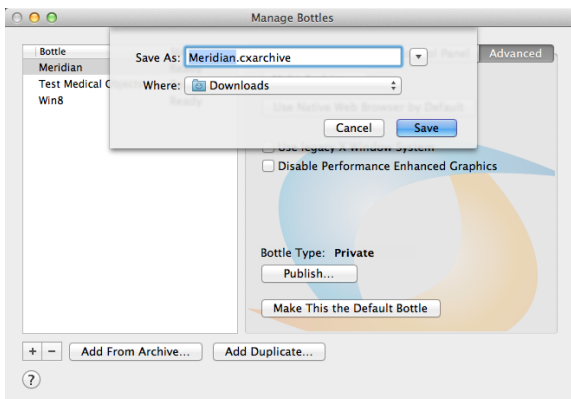
1. In case of corruption You will need to make a backup of the Bottle you have made. Select Crosover and go to **Configure > Manage Bottles**.



2. Select **Advanced** and then the button **Make Archive**



3. You can save the Archive where ever you wish. Call the backup **Medical-Objects Backup**. In this instance we are saving it into Documents (Generally the Archive is saved to Documents so Medical-Objects Staff can easily find it and restore it if needed).



Starting Medical Objects Explorer

1. Open Crossover. From the top window menu choose **Programs > Medical Objects**
2. When the installation is completed a folder is created for the shortcut to start the program and opened in a new finder window. Take note of the window's location (Generally in **Places > Admin >.....** in the Finder) and the shortcut can be used from there or moved to a more convenient location.