

Setting up the Capricorn as a Service

Overview

This guide provides an overview on configuring the Medical-Objects Download Client (Capricorn) to be run as a service. This is an optional process, but recommended.

If you require any assistance with the installation or configuration, or if you have any questions, please contact the Medical-Objects Helpdesk on (07) 5456 6000.

- 1 [Overview](#)
- 2 [Configuring Capricorn Software](#)
 - 2.1 [Accessing the Capricorn Configuration Window](#)
 - 2.2 [Setting up a service](#)

Configuring Capricorn Software

Accessing the Capricorn Configuration Window

Note:



In some cases, the Capricorn may be configured as a service. See [this guide](#) for instructions on how to launch the Capricorn if it is set up as a service.

1. To launch the HL7 Tray application, Go to **Start Menu, All Programs, Medical-Objects** and select the **Medical-Objects Capricorn**. Alternatively, You can go to **C:\MO\Capricorn** and run the **Capricorn.exe**.
2. The following icon will appear in the tray. Double click on it to bring up the log window.

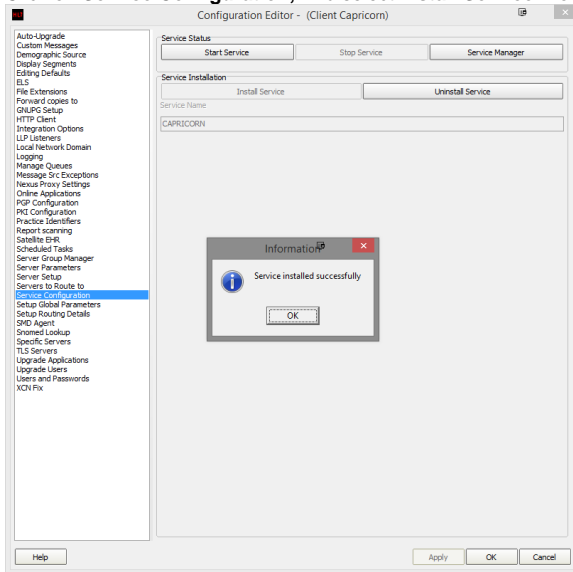


3. When the log window is displayed, Click on the **Configuration** icon highlighted below, or select **Utility** and select **Configuration**.

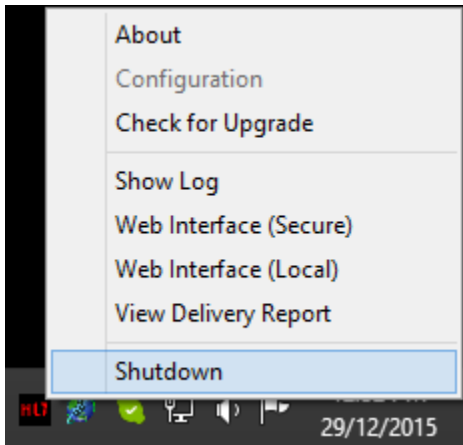


Setting up a service

1. Click on **Service Configuration**, And select **Install Service**. You will see the following box.



2. Shut down the Capricorn by right clicking on the Tray icon and selecting **Shutdown**.

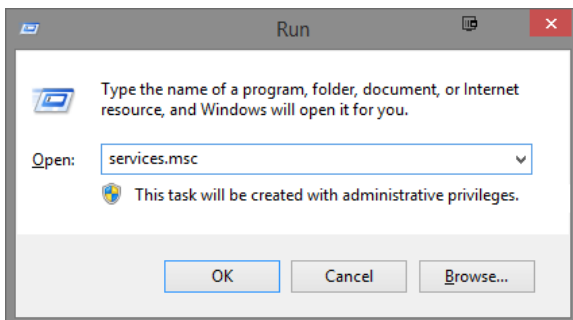


Note:

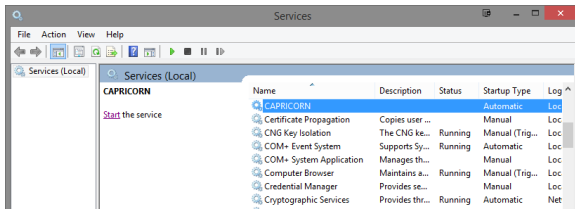


The Capricorn must not be running before you start the service. You can check for the Capricorn.exe process in the task manager.

3. Go to **Services** by selecting **Start, Run** and typing **services.msc**.



4. Select the Capricorn service and select **Start**.



5. The Capricorn is now running as a service.