

Setting up an MDM messaging Queue

Overview

If you have any questions or require any assistance, Please contact the Medical-Objects Helpdesk on (07) 5456 6000.

- 1 [Overview](#)
- 2 [Accessing the Capricorn Configuration Window](#)
- 2.1
- 3 [Setting up the Queue](#)

Accessing the Capricorn Configuration Window

Note:



In some cases, the Capricorn may be configured as a service. See [this guide](#) for instructions on how to launch the Capricorn if it is set up as a service.

1. To launch the HL7 Tray application, Go to **Start Menu, All Programs, Medical-Objects** and select the **Medical-Objects Capricorn**. Alternatively, You can go to **C:\MO\Capricorn** and run the **Capricorn.exe**.
2. The following icon will appear in the tray. Double click on it to bring up the log window.

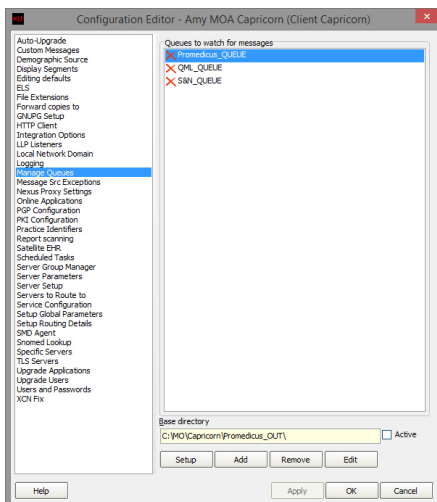


3. When the log window is displayed, Click on the **Configuration** icon highlighted below, or select **Utility** and select **Configuration**.

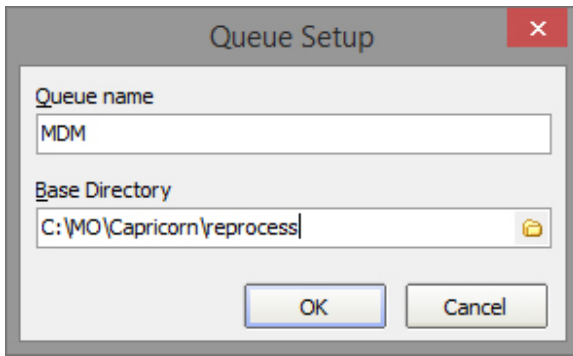


Setting up the Queue

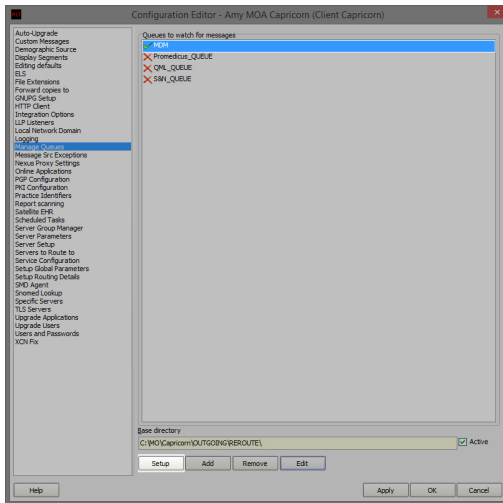
1. Choose **"Manage Queues"** from the left hand menu.



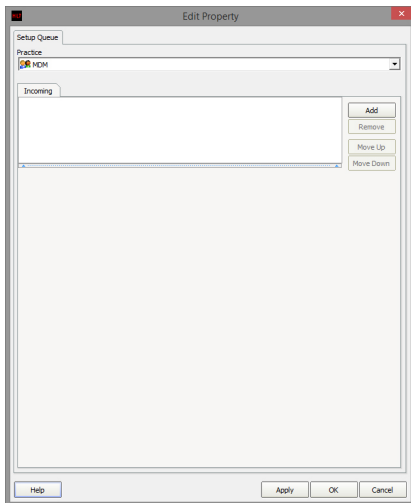
2. Click the **Add** button and enter the name of the queue and the path where you want the MDM files to be picked up from. Click **OK** when done.



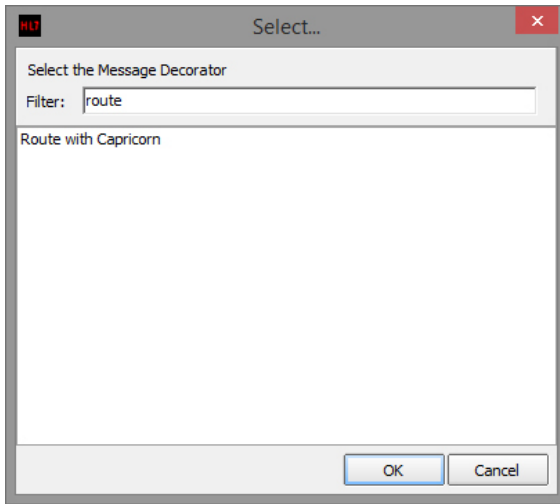
3. While you have your MDM queue selected choose the **Setup** button.



4. Next choose the **Add** button.



5. In the filter box type in the word "**route**". "**Route with Capricorn**" should now be the only thing displayed, select it and click **OK**.



6. You will now have 1 item in your list. Click **OK** on the remaining windows to exit the configuration.

