

Auto Logout Configuration

Overview

This process will explain how to set the Auto-logout time within the Medical-Objects Explorer (Meridian). This is the period of time the Explorer client will wait before logging you out.

If you require any assistance with the installation or configuration, or if you have any questions, please contact the Medical-Objects Helpdesk on (07) 5456 6000.

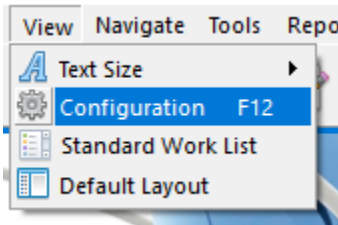
- 1 [Overview](#)
- 2 [Configuring the Auto-Logout Duration](#)

Configuring the Auto-Logout Duration

Note:

While it is possible to do this, Medical-Objects does not recommend changing the value as it can cause security risks.

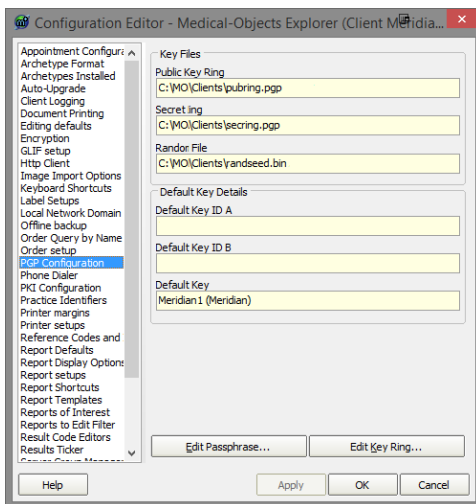
1. With your Explorer software logged in, Go to **View**, and select **Configuration**.



Note:

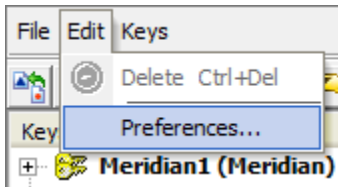
Alternatively you can press the **F12** key on your keyboard.

2. On the left of the window that opens select **PGP Configuration**. The following window should appear.

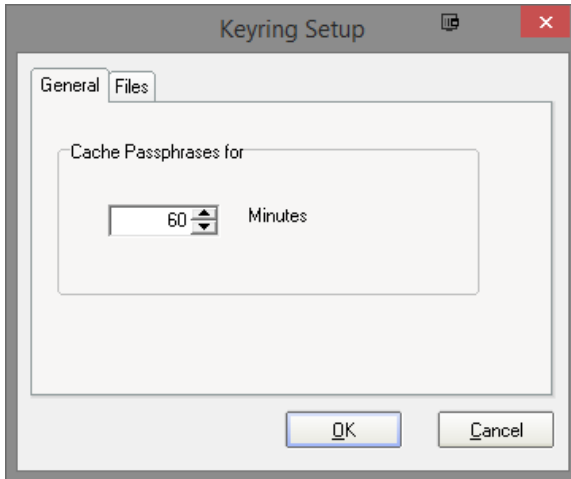


3. Next click on the **Edit Key Ring** button.

4. In the **PGP Key Manager** window below, Click **Edit**, and **Preferences**.



5. Choose the General tab at the top of the window. The time in this box indicates how long the application will remain inactive before you are logged out.



Warning:



You can change this option to however long you wish. Keep in mind that setting the time too high may cause security risks, and setting it too low may become annoying.

6. Click **OK** to exit each of the screens you have open to return to your main program window.