

Exporting Patient Details for use with NTS

Overview:

If you require any assistance with the installation or configuration, or if you have any questions, please contact the Medical-Objects Helpdesk on (07) 5456 6000.

If you have not Installed the Medical-Objects Download client, Please see the guide for [Installing Capricorn on Windows](#).

- 1 [Overview:](#)
- 2 [Configuring Capricorn Software](#)
 - 2.1 [Accessing the Capricorn Configuration Window](#)
 - 2.2 [Capricorn Configuration Settings](#)
- 3 [SQL Server settings](#)

Configuring Capricorn Software

Accessing the Capricorn Configuration Window

Note:

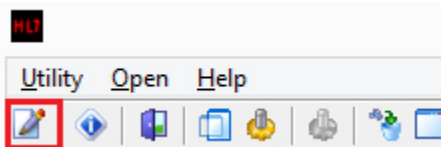


In some cases, the Capricorn may be configured as a service. See [this guide](#) for instructions on how to launch the Capricorn if it is set up as a service.

1. To launch the HL7 Tray application, Go to **Start Menu, All Programs, Medical-Objects** and select the **Medical-Objects Capricorn**. Alternatively, You can go to **C:\MO\Capricorn** and run the **Capricorn.exe**.
2. The following icon will appear in the tray. Double click on it to bring up the log window.



3. When the log window is displayed, Click on the **Configuration** icon highlighted below, or select **Utility** and select **Configuration**.



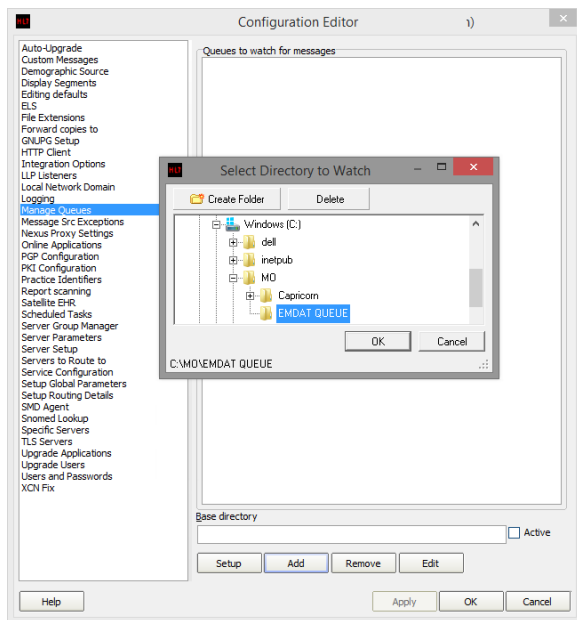
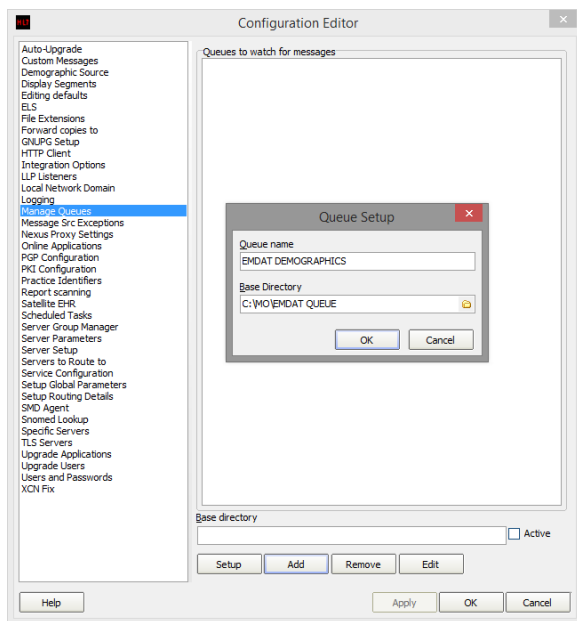
Capricorn Configuration Settings

Choose **Manage Queues** from the left hand Panel. Select **Add**, and enter a queue name. For this example we will use **EMDAT DEMOGRAPHICS** with the base directory set to **C:\MO\EMDAT QUEUE**.

Note:

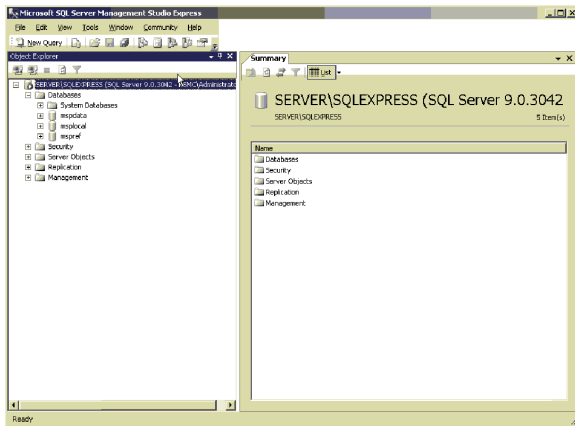


The directory is never used but it cannot be empty.



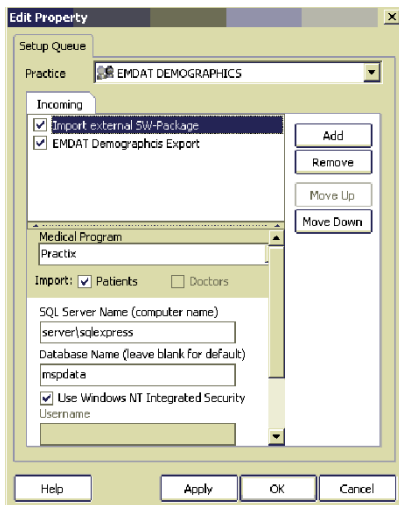
SQL Server settings

1. Go to your SQL server and login. Find the name of your server (In this instance **Server\SQLExpress**). Also note the name of the mspdata database for Practix as this may change.

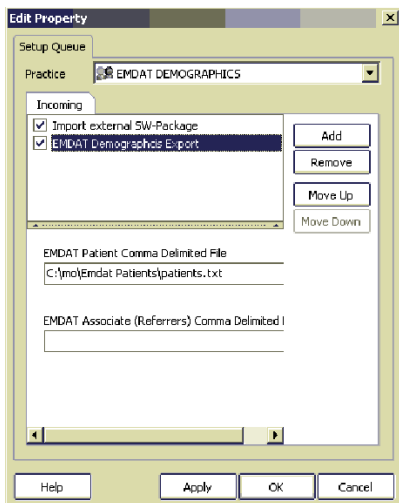


2. Go back to your Medical-Objects program and select the queue you created and press the **setup** button. One in the sub window Add the modifiers as listed in the screenshot below.

Choose **Practix** as your practice software. Tick the **Patients** checkbox. Set the **SQL Server Name** as you recorded in step 1. Set the **Database Name** as you recorded in step 1.

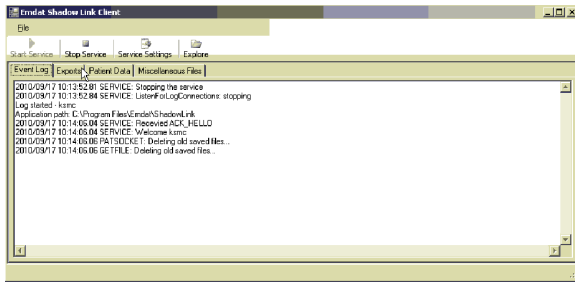


3. Set a save path for your "**EMDAT Demographics Export**". Make sure you put patients.txt as the end of the path. Any path can be chosen as long as it is only allocated for this particular function and nothing else (i.e. Don't use your My documents folder)



4. Exit out of the Medical Objects configuration.

Switch to **NTS Shadowlink** and click on the "**Service Settings**" button.



5. Go to the **"Patient Data"** tab and then the **"Batch Files"** tab.

Set the **File Format** at **Format 3**. Set your save path as per step 3.

Exit out of the Shadowlink setup and choose to restart the service if it asks.

