

Setting up Graphing

Overview

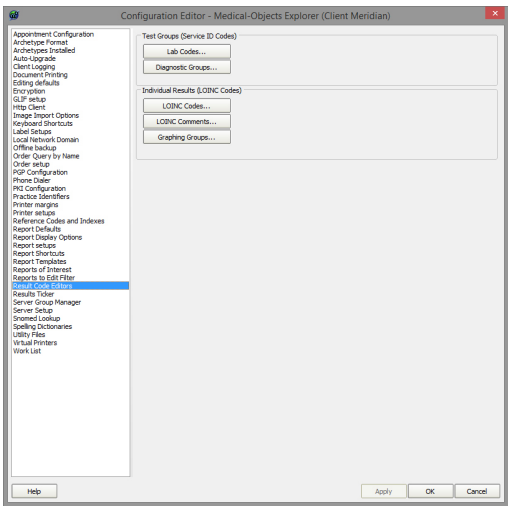
- 1 Overview
- 2 Setting up Graphing

This guide provides a brief overview on Setting up graphing from within the Medical-Objects Explorer (Meridian).

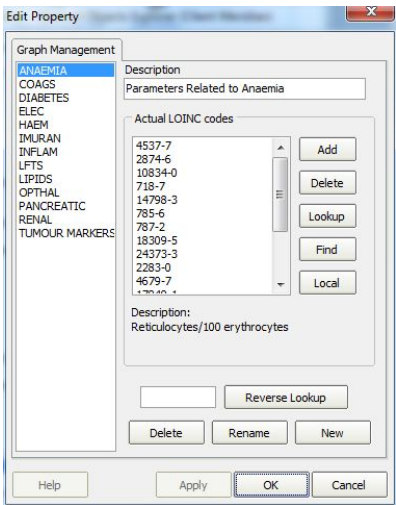
If you require any assistance with the installation or configuration, or if you have any questions, please contact the Medical-Objects Helpdesk on (07) 5456 6000.

Setting up Graphing

1. In the main Explorer window go to **View --> Configuration Options**.
2. Choose the tab "Result Code Editors"



3. To create a graph go to **"Graphing Groups"**.
4. At the bottom of the new window click the **"New"** button and give your group a name.
5. You can add a description at the top.
6. Click the **"Add"** button to add each LOINC code that you want reported.



Note:

To find out the LOINC codes that your report contains you can hover over a test name (E.g. Globulin indicated by a red arrow) and the code is shown in the bottom left corner of the Explorer window (Indicated by a red arrow CODE: 2336-6).

Medical Objects - logged into Buderrm GE Centre as NON MEDICAL USER (MERIDIAN) <MO708390.BUDERRM GE CENTRE>

File Patients Documents Create Document Providers View Navigate Tools Reports Window Help

Patients: 1
 Query: 1
 Unreviewed Results: 0
 Further Review: 2
 Reviewer's Comments: 1

Available Results

10.10.2011: Clinical Image (N H)
 10.10.2011: Endoscopy
 06.10.2011: Medical Records (N H)
 06.10.2011: GP Referral
 22.09.2011: Full Blood Count
 22.09.2011: Erythrocyte Sedimentation
 22.09.2011: Electrolytes & UFTs
 22.09.2011: GP Referral
 20.07.2011: Follow up details
 21.07.2011: Hepatitis B Ab
 21.07.2011: Electrolytes & UFTs
 20.07.2011: Electrolytes & UFTs
 20.07.2011: Full Blood Count
 20.07.2011: Enteric report
 20.07.2011: Repeat Notification
 19.07.2011: Enteric report
 19.07.2011: Repeat Notification
 19.07.2011: Enteric report
 18.07.2011: Iron Studies
 18.07.2011: Antinuclear Abs
 18.07.2011: Coeliac Antibodies
 18.07.2011: Tissue Autoantibod
 18.07.2011: B12 Folate Studies
 18.07.2011: Full Blood Count
 18.07.2011: Thyroid Hormones
 18.07.2011: Protein Chemistry
 18.07.2011: Lipid Chemistry
 18.07.2011: Electrolytes & UFTs

Patients: DOB: WOODHAY QLD 4559 AUS
 Female
 Specimen: Blood
 LabNo: 17770111 (+1000)
 Requested by: 18/7/2011 10:56 (+1000)
 Test Date: 18/7/2011 12:42 (+1000)
 Reported: 18/7/2011 12:42 (+1000)

General Chemistry

	Units	Ref. Range
Sodium	139 mmol/L	135 - 145 N
Potassium	3.4 mmol/L	3.5 - 5.3 L
Chloride	105 mmol/L	100 - 110 N
Bicarbonate	27 mmol/L	22 - 32 N
Anion Gap	7 mmol/L	4 - 13 N
Osmolality (Calculated)	286 mmol/kg	275 - 285 N
Glucose	7.2 mmol/L	3.0 - 7.0 N
Glucose - fasting RR	-> 18.7.2011 12:09 (+1000)	3.0 - 6.0 N
Urea	2.9 mmol/L	2.9 - 6.2 N
Creatinine	82 umol/L	46 - 99 N
GFR (estimated)	60 mL/min/1.73m ²	> 60 N
Urea/Creat	35	40 - 100 L
Urine	0.35	0.15 - 0.45 N
Protein (Total)	63 g/L	60 - 83 N
Albumin	34 g/L	35 - 50 L
Globulin	29 g/L	25 - 45 N
Bilirubin (Total)	11 umol/L	< 20 N
Bilirubin (Conj.)	< 4 umol/L	< 4 N
Alkaline Phosphatase	74 U/L	53 - 141 N
Gamma-GT	134 U/L	< 38 H
Alanine Transaminase	1530 U/L	< 34 H
Aspartate Transaminase	746 U/L	< 33 H

CODE: 2336-6

No Tasks Active Disconnected 11/10/2011 10:02:04 AM

- Once you are done this set-up should load on the other Explorers connected to your server. They will require a restart to show the new graphs.

To group similar LOINC codes for graphing see [Grouping LOINC Codes](#).