

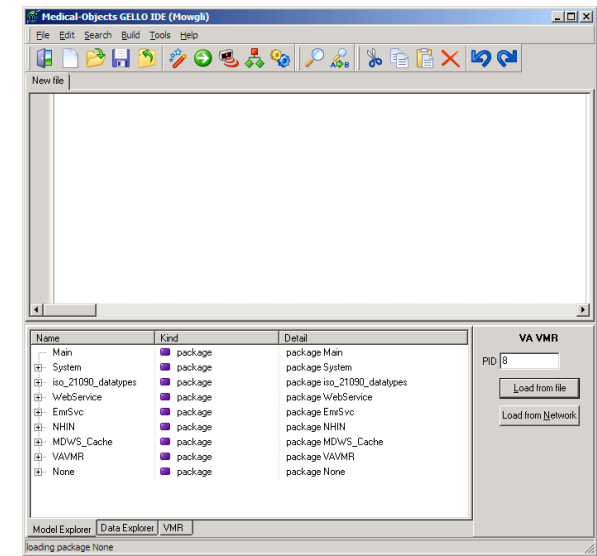
VA VMR Gello - Getting Started

Overview

- 1 Overview
- 2 Changing the patient context

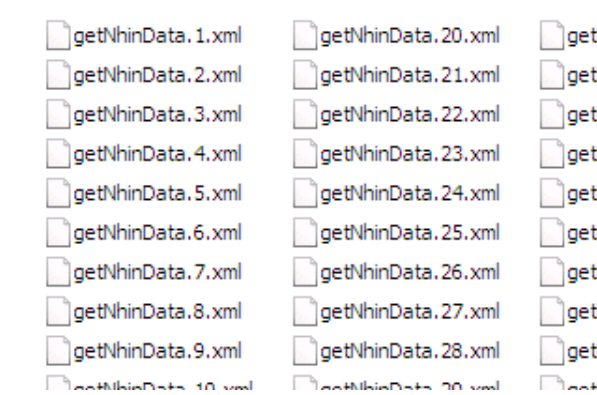
This guide will give you a step by step guide to show you how to run the Gello examples provided as part of the Gello IDE with VA Nhin data.

Install the download program and start the Mowgli IDE. At the end of the setup process, you will see the IDE which looks as follows.



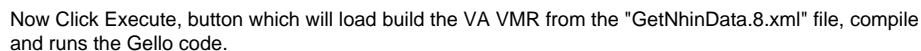
You will see on the bottom right hand side a panel "VA VMR" which has a text field that says PID "8". This is the patient context that the Gello example will be executed in.

The actual test patient data is stored in NHIN XML data files. These files were obtained from the MDWS webservice getNhinData call. You will find them in the "C:\MO\Gello_VAVMR\nhin" directory if you chose the default install location.



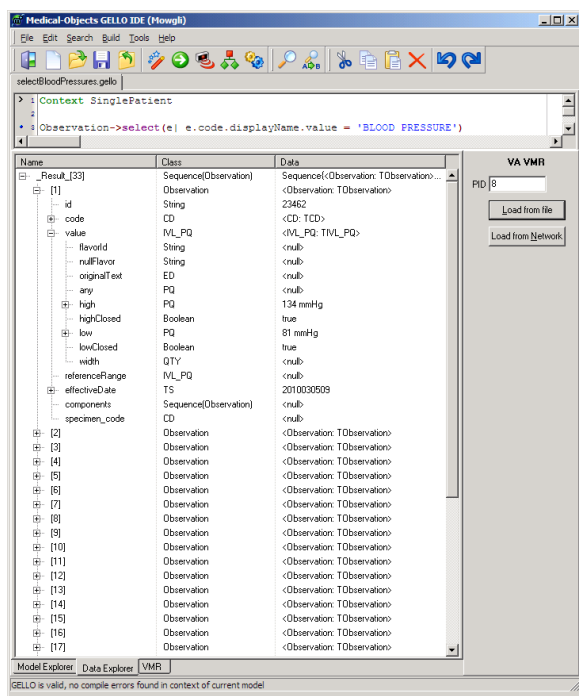
The VA VMR panel selection PID "8" selects the "getNhinData.8.xml" file.

Now, on the "File" menu choose "Open". Navigate to "C:\MO\Gello_VAVMR\VA_Gello".



The screenshot shows the GELLO IDE (Hewlett) interface. The top menu bar includes File, Edit, Search, Build, Tools, and Help. Below the menu is a toolbar with various icons for file operations and development. The main window displays a GELLO script: "Context SinglePatient" followed by a query: "select(e) e.code.displayName.value = 'BLOOD PRESSURE'". Below the script editor is a table with columns Name, Class, and Data. The table contains one row: "+ _Result_33", Sequence(Observation), and Sequence(-:Observation; TObservation; :O...). To the right of the table is a section labeled "VA VMR" with a "PID #" field and two buttons: "Load from file" and "Load from Network". At the bottom, there are tabs for "Model Explorer", "Data Explorer", and "VMR".

In the lower pane expand the observation sequence result by clicking the + symbol next to the word "Result [33]". This will give you the following...



Changing the patient context

To select a different patient context on which to run the query. Enter a different PID number, corresponding to the getNhinData.<PID>.xml filename. Click Load from File, this will retrieve the current PID and display its VMR in the lower pane.

There is a "Summary.xls" file in the nhin subdirectory which indicates which patients have the various data items such as problems, vital signs, lab observations etc.