

# GPComplete


## Overview

This guide provides a basic overview on configuring the Medical-Objects Download Client (Capricorn) and GPComplete Practice software to import electronic results.

If you require any assistance with the installation or configuration, or if you have any questions, please contact the Medical-Objects Helpdesk on (07) 5456 6000.

If you have not Installed the Medical-Objects Download client, Please see the guide for [Installing Capricorn on Windows](#).


### Warning

 Please note that GPComplete currently generates malformed acknowledgements. These acknowledgements should not be configured to be delivered by the Medical Objects network as they can cause major issues.

## Configuring Capricorn Software

### Accessing the Capricorn Configuration Window

#### Note:

 In some cases, the Capricorn may be configured as a service. See [this guide](#) for instructions on how to launch the Capricorn if it is set up as a service.

1. To launch the HL7 Tray application, Go to **Start Menu, All Programs, Medical-Objects** and select the **Medical-Objects Capricorn**. Alternatively, You can go to **C:\MO\Capricorn** and run the **Capricorn.exe**.
2. The following icon will appear in the tray. Double click on it to bring up the log window.



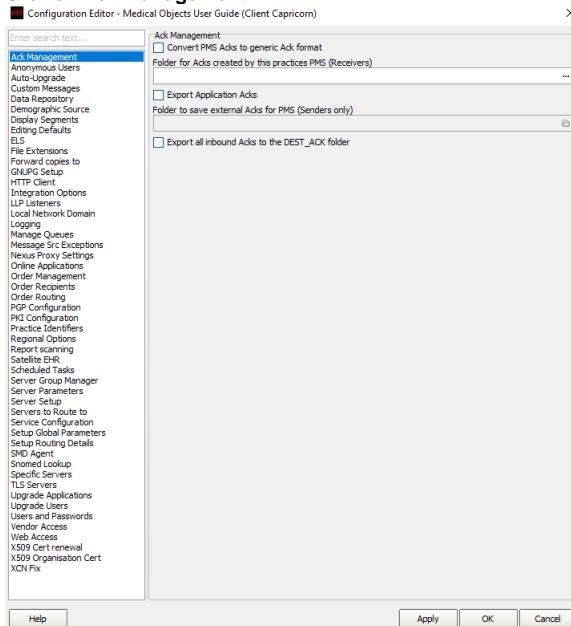
3. When the log window is displayed, Click on the **Configuration** icon highlighted below, or select **Utility** and select **Configuration**.



### Capricorn Configuration Settings

- 1 [Overview](#)
- 2 [Configuring Capricorn Software](#)
  - 2.1 [Accessing the Capricorn Configuration Window](#)
  - 2.2 [Capricorn Configuration Settings](#)
- 3 [Importing Into GPComplete](#)

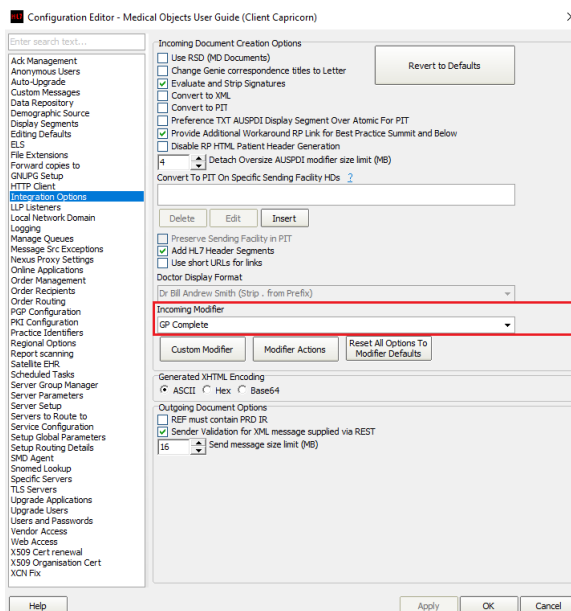
1. Click on **Ack Management**.



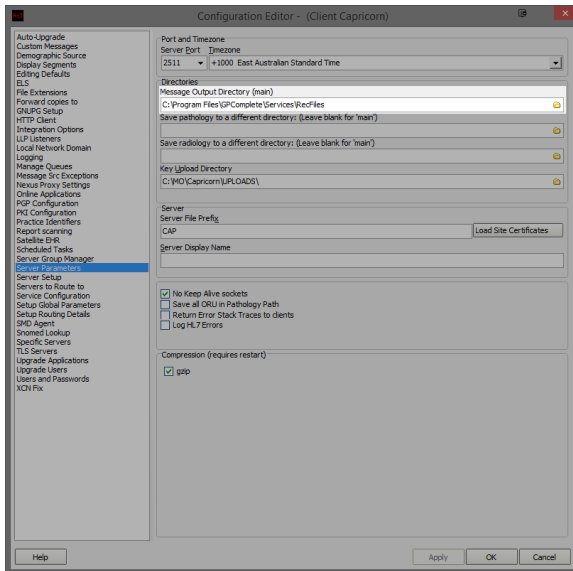
2. Due to current malformed acknowledgements error (See warning at top of page). Make sure the **ACKManagement** Path is blank.

3. Click on **Integration Options**.

3.1 Check that the **Incoming Modifier** is set to **GP Complete**



4. Select **Server Parameters** from the left panel.




The paths above are set as follows:

```
(Capricorn installed on a GPComplete Server Machine) --> C:\Program Files\GPComplete\Service\RecFiles\
```

```
(Capricorn installed on a GPComplete Client Machine) --> \\server\GPComplete\Service\RecFiles\
```

Note:

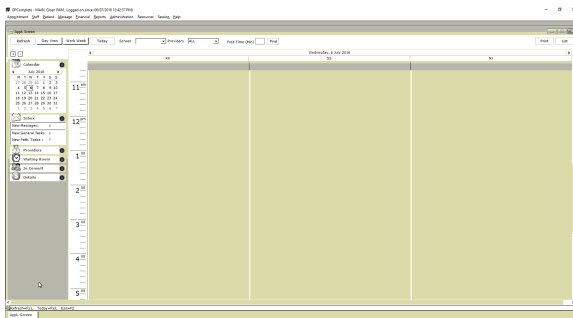
 If the folder does not exist, You must create it.

5. The Medical-Objects configuration is complete. Click **Apply** and **OK**.

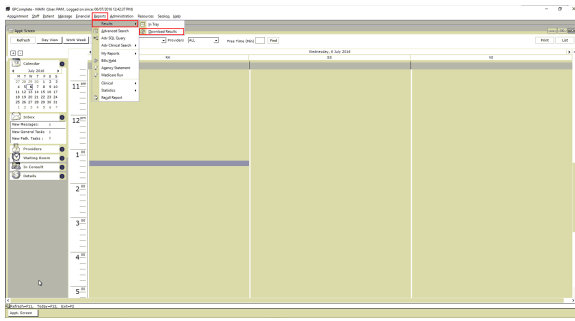
## Importing Into GPComplete

GPComplete does not require any configuration from Medical-Objects to import results. Below are the steps to manually import results.

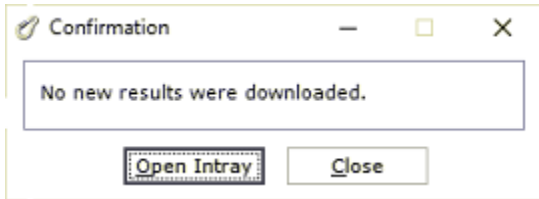
1. Open the **GPComplete** main window.



2. Choose **Reports** from the top menu. Select **Results** and select **Download Results**.



- Results will download into GPCComplete. If there are no new results, the below message will show. Select **Open InTray** to view results.



If the results haven't been imported into the **InTray**, you may need to close the **InTray** and reopen it to allow it to refresh and list the imported results.