

Totalcare Sending

Overview

This section includes instructions for setting up the Medical-Objects Capricorn for Sending through Totalcare software. This step is designed to be included in the Totalcare Capricorn Configuration Guide [Here](#).

If you require any assistance with the installation or configuration, or if you have any questions, please contact the Medical-Objects Helpdesk on (07) 5456 6000.

If you have not Installed the Medical-Objects Download client, Please see the guide for [Installing Capricorn on Windows](#).

- 1 Overview
- 2 Configuring Capricorn Software
 - 2.1 Accessing the Capricorn Configuration Window
 - 2.2 Capricorn Configuration Settings
- 3 Total Care Document Templates
- 4 Total Care Recipient Setup

Configuring Capricorn Software

Accessing the Capricorn Configuration Window

Note:



In some cases, the Capricorn may be configured as a service. See [this guide](#) for instructions on how to launch the Capricorn if it is set up as a service.

1. To launch the HL7 Tray application, Go to **Start Menu, All Programs, Medical-Objects** and select the **Medical-Objects Capricorn**. Alternatively, You can go to **C:\MO\Capricorn** and run the **Capricorn.exe**.
2. The following icon will appear in the tray. Double click on it to bring up the log window.

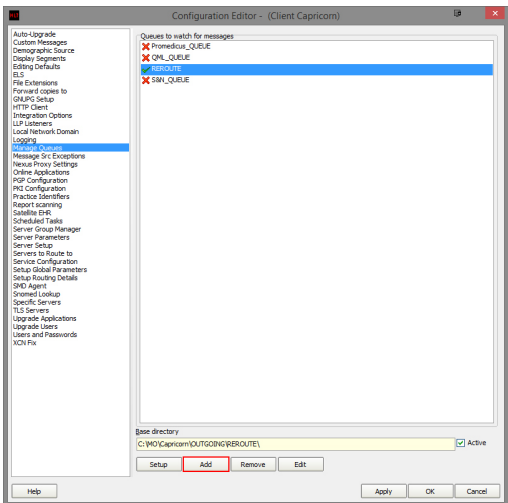


3. When the log window is displayed, Click on the **Configuration** icon highlighted below, or select **Utility** and select **Configuration**.

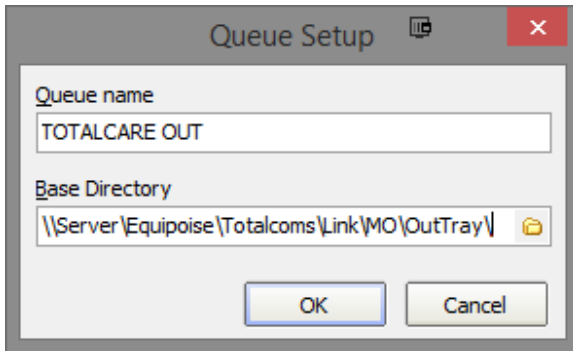


Capricorn Configuration Settings

1. Click on **Manage Queues** in the left hand panel, and select the **Add** button.



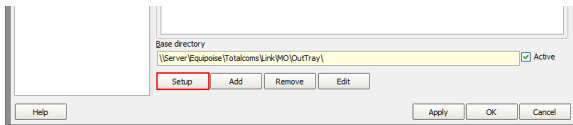
2. Enter the following details and click **OK**.



The 'Queue Setup' dialog box has a title bar with a close button. It contains two input fields: 'Queue name' with the text 'TOTALCARE OUT' and 'Base Directory' with the path '\\Server\Equipoise\Totalcoms\Link\MO\OutTray\'. At the bottom are 'OK' and 'Cancel' buttons.

Queue name --> TOTALCARE OUT
Base Directory --> \\Server\Equipoise\Totalcoms\Link\MO\OutTray

3. Click the **Setup** button.

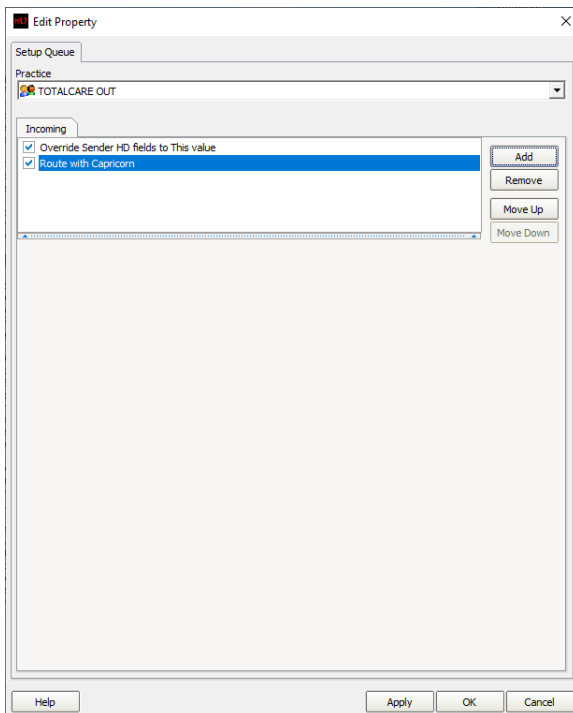


The 'Queue Setup' dialog box is shown with the 'Setup' button highlighted by a red rectangle. The 'Base directory' field shows the path '\\Server\Equipoise\Totalcoms\Link\MO\OutTray\'. Below the buttons are 'Apply', 'OK', and 'Cancel' buttons.

4. Click the **Add** button again, and search for **Override Sender HD fields to This value**. Click **OK** to add it to the queue.

The **Practice Identifier** fields must be filled out or tick "Use Primary Practice Identifier". Please contact Medical Objects for the details in this area, as they are unique to each setup.

5. Click **Add** one more time, and search for **Route with Capricorn**.
6. Your setup should look like below. Click **Apply** and **OK** to save the sending queues.



The 'Edit Property' dialog box shows the 'Setup Queue' tab. The 'Practice' dropdown is set to 'TOTALCARE OUT'. Under the 'Incoming' section, two items are listed: 'Override Sender HD fields to This value' and 'Route with Capricorn', both with checked boxes. To the right of the list are buttons: 'Add', 'Remove', 'Move Up', and 'Move Down'. At the bottom are 'Help', 'Apply', 'OK', and 'Cancel' buttons.

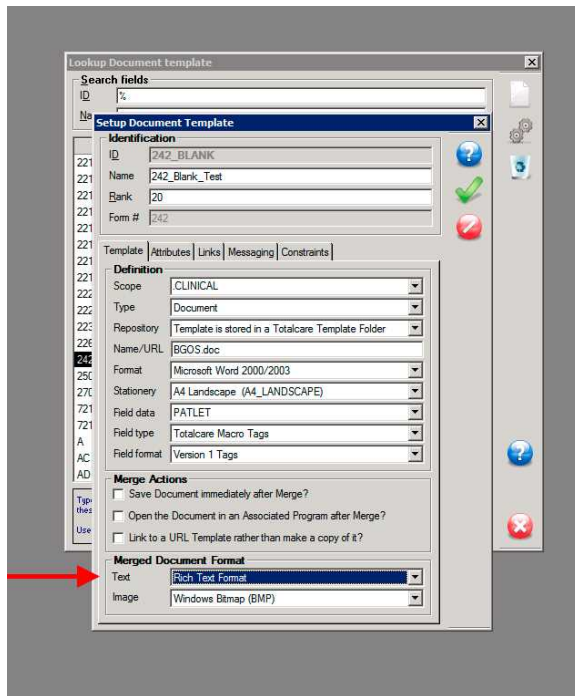
Warning

Note that previously **Specify file mask** was included in the queue but some TotalCare setups would output .hl7 and other .oru so the file mask has been dropped as only files to send are normally in the folder anyway.

Total Care Document Templates

Warning: It is important for document templates used for sending, in conjunction with Medical Objects, that specific settings are required for compatibility. Note that RTF is chosen in the screenshot below.

You can find this configuration in the CareManager module Setup Documents Templates Templates (the template you want to change)"



Total Care Recipient Setup

Please ensure for people receiving Totalcare reports that they set each **Recipient Communications** settings as below.

Word documents from TotalCare often cause problems. If possible choose PDF instead of DOC and always keep "HL7 Formatted Text" if possible.

CareManager module Setup Business Providers Address eCommunications settings

Setup Recipient eCommunications

Transport service

Transport: Medical Objects

Service ID / URI:

Package type: HL7

Package version: HL7_2.3.1

Acknowledge?: HL7 Enhanced acknowledgement mode

Capabilities

Message types? ☒ HL7 ORU ☐ HL7 REF

Content types? ☒ HL7 Formatted Text ☐ HTML ☐ Rich Text Format ☐ Adobe PDF ☐ Image support

Display segment: Include a PDF display segment

Security

Protocol engine: Transport embedded security

Encryption?: AES

Digest?: SHA1

Signature?: Yes

Help icons: ? (blue), ✓ (green), ? (red)