

Installing Eclipse on Windows

- 1 Overview
- 2 Installation and Configuration of Eclipse Software
- 3 Registration Process

Overview

This guide contains the instructions to install the Medical-Objects Download Client (Eclipse) on a Windows operating system.

If you have any questions or require any assistance, Feel free to contact the Medical-Objects Helpdesk on (07) 5456 6000.

Installation and Configuration of Eclipse Software

1. Download the latest Eclipse from the following link.

<https://download.medical-objects.com.au/>

2. The link on the download page looks like the following:

Relay Client (Eclipse)

Eclipse is an integration tool that can enable communication between different messaging systems. The Eclipse software allows you to perform a variety of different functions on incoming and outgoing messages to ensure that they reach their destination correctly.

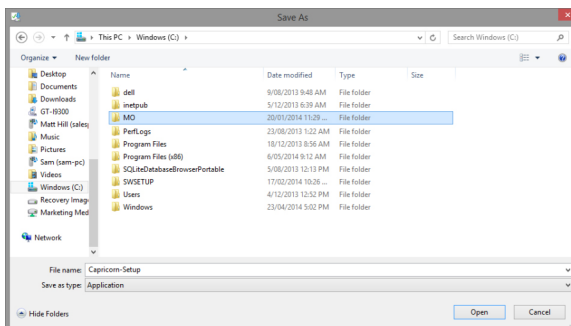
[Download](#) [More Info](#)

3. Choose to Save the file and the following **Save As** window will appear. Save the **Eclipse-Setup.exe** in the directory **C:\MO**

Note:

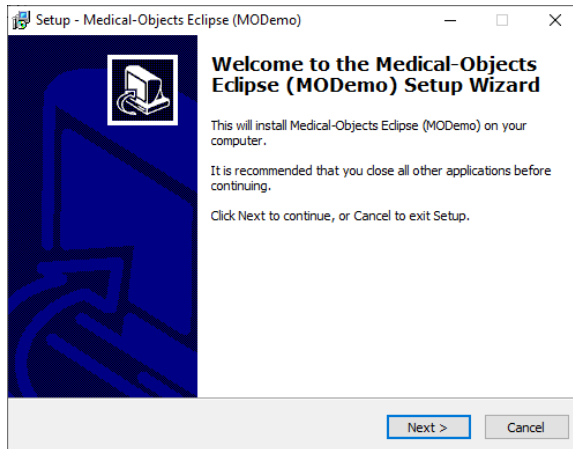


If the directory does not exist, Create it.

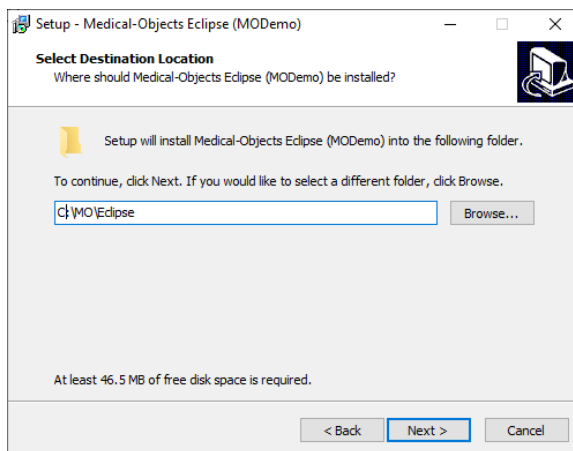


4. Next if there is an option to run the download when it is finished select it. If not find the file in the folder that you downloaded it to and run the program.

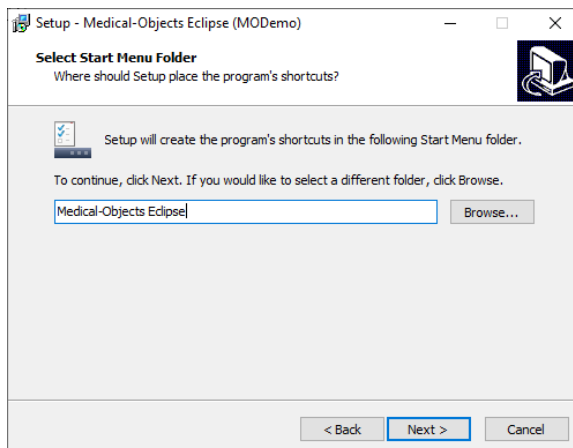
5. Click **Next**.



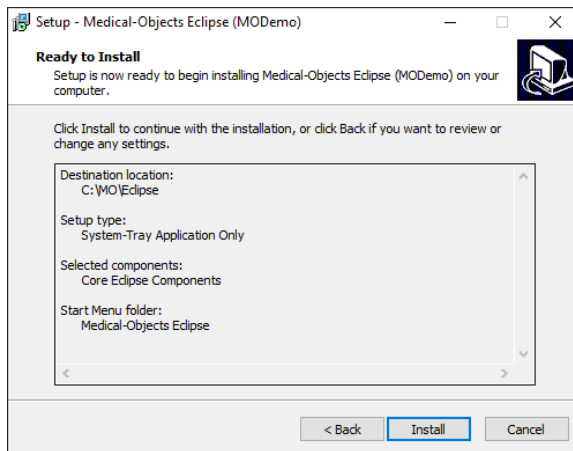
6. Click **Next**.



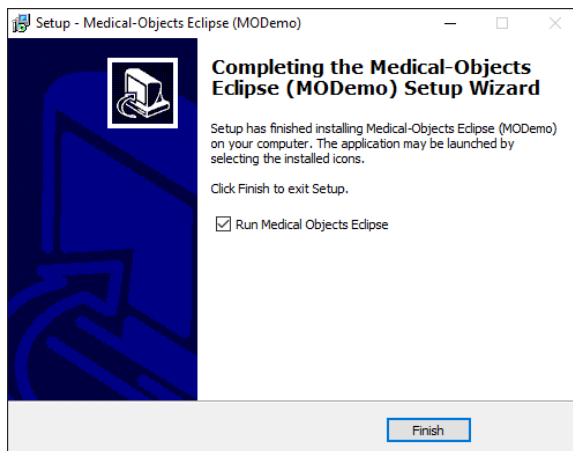
7. You can choose a name for the start menu folder for the program.



8. Click **Install**.



9. The Setup wizard is now complete.



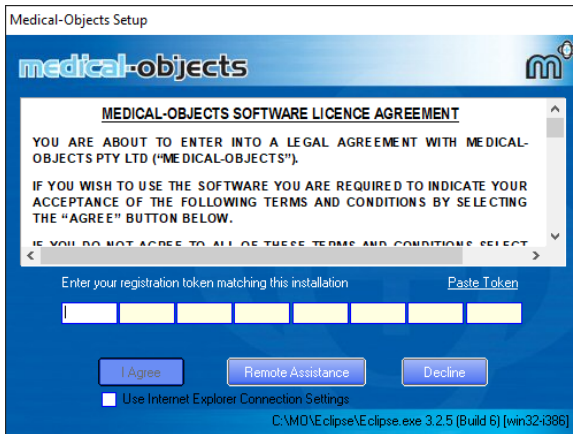
10. Click **Finish**.

Registration Process

1. Once the setup is complete you will need to enter the Token or Serial key provided by the Medical-Objects help desk.

Note:

The Token or Serial Key can be emailed to you. If you do not already have a token, Please contact the Medical-Objects Helpdesk on (07) 5456 6000.



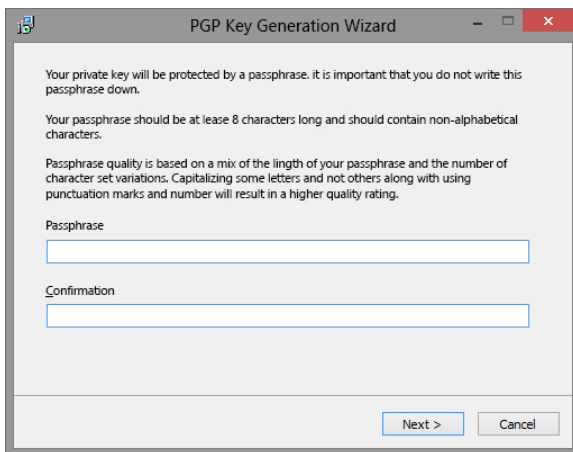
Warning: Do not tick "Use Internet Explorer Connection Settings" unless you know you have a content filtering system or proxy that requires it. If this is the case please notify the Medical Objects staff member you have done this as it will affect some features of the Eclipse. Specifically the Eclipse will not be contactable via HTTPS.

- From the email, copy the token and click the **Paste Token** link.

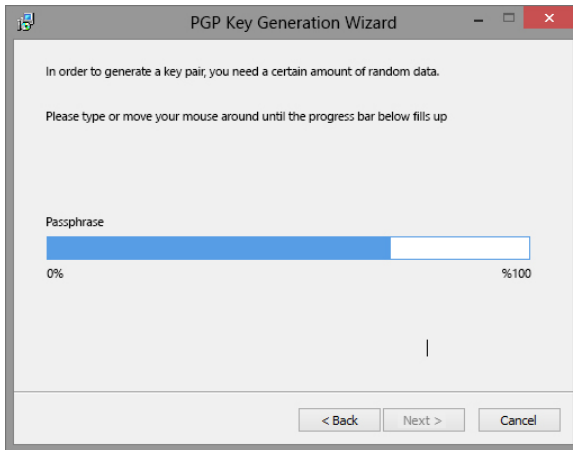
Note:

This will automatically fill in the Registration Token for you.

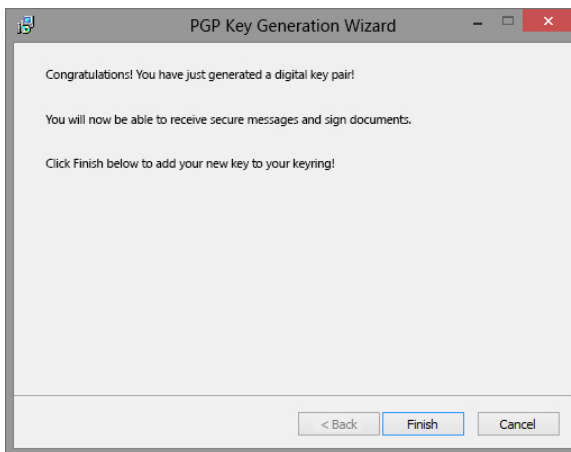
- Click **I Agree**.
- The PGP Key Generation Window will then appear.



- Enter **pgp** in lowercase into both fields. Then click **Next**.
- The following window will appear.




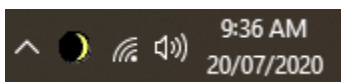
7. At this window you can just type anything to make the blue bar move to 100%, then click **Next**.
8. The following window will appear.



9. Click **Finish**.

Note:

 The main installation of the Medical-Objects Eclipse is now complete. The Yellow Moon Tray icon will now be shown in the system tray located at the bottom right hand corner of the desktop.



The installation of the Medical-Objects Download client is complete. Please continue to the [Practice Software Configuration Guides](#).

Note Eclipse can be configured as a service if required.