

# HL7 Output

## Overview:

This guide provides instruction on configuring the Medical-Objects Download Client (Capricorn) to output HL7 Results to a set folder.

If you require any assistance with the installation or configuration, or if you have any questions, please contact the Medical-Objects Helpdesk on (07) 5456 6000.

If you have not Installed the Medical-Objects Download client, Please see the guide for [Installing Capricorn on Windows](#).

1 Overview:

2 Configuring Capricorn Software


2.1 Accessing the Capricorn Configuration Window

2.2 Capricorn Configuration Settings

## Configuring Capricorn Software

### Accessing the Capricorn Configuration Window

Note:

 In some cases, the Capricorn may be configured as a service. See [this guide](#) for instructions on how to launch the Capricorn if it is set up as a service.

1. To launch the HL7 Tray application, Go to **Start Menu, All Programs, Medical-Objects** and select the **Medical-Objects Capricorn**. Alternatively, You can go to **C:\MO\Capricorn** and run the **Capricorn.exe**.
2. The following icon will appear in the tray. Double click on it to bring up the log window.

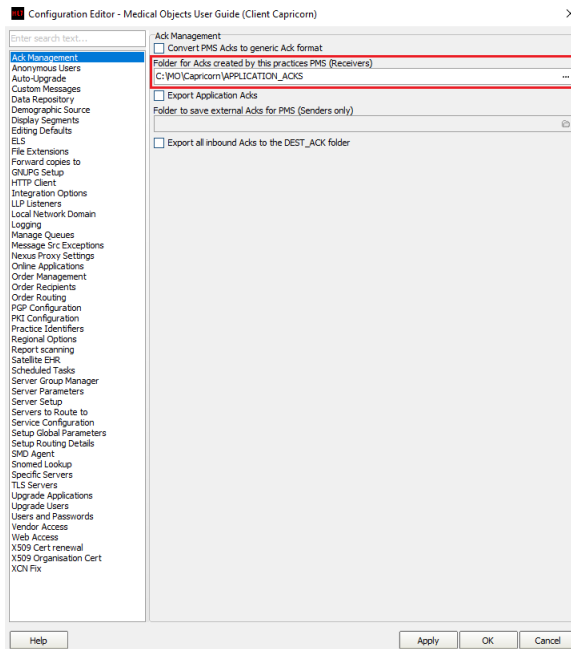


3. When the log window is displayed, Click on the **Configuration** icon highlighted below, or select **Utility** and select **Configuration**.



### Capricorn Configuration Settings

## 1. Click on **Ack Management**.

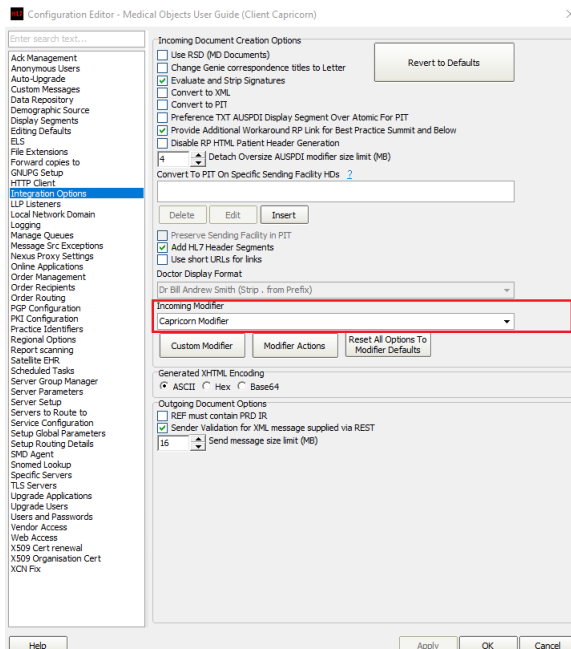


## 2. Set the **ACK Management** path to **C:\MO\Capricorn\APPLICATION\_ACKS**

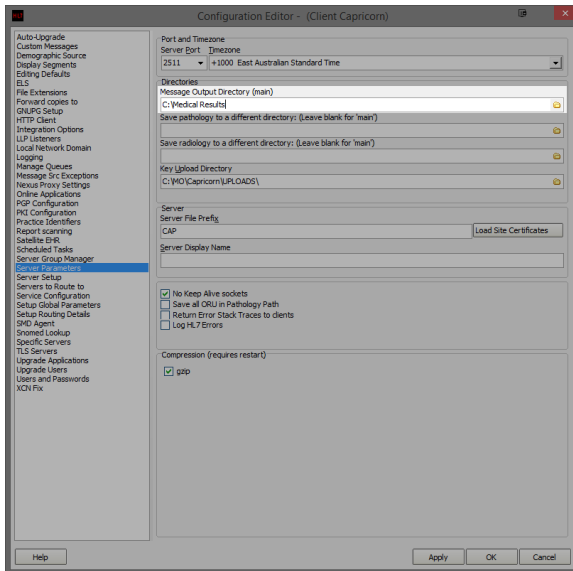
## 3. Click on **Integration Options**.

### 3.1 Set the **Incoming Modifier** to **Capricorn Modifier** as shown below.

Alternatively the field can be left blank for a messages to be delivered as close to they were originally sent as possible.



## 4. Click on **Server Parameters** in the left pane.



5. Under the **Message Output Directory (main)**, set the results import path.

The path will be a folder you want to use to store the HL7 results or messages that you receive.

For this installation we will just create a folder in the C: drive called **Medical Results**.  
The file path in this case will be **C:\Medical Results**.

6. Press the **Apply** button when configurations are complete. All future messages will be delivered to this folder in HL7 format.