

Promadis

Overview:

This guide provides instruction on configuring Medical-Objects Capricorn to import electronic results into Promadis Software.

If you require any assistance with the installation or configuration, or if you have any questions, please contact the Medical-Objects Helpdesk on (07) 5456 6000.

If you have not Installed the Medical-Objects Download client, Please see the guide for [Installing Capricorn on Windows](#).

- 1 [Overview:](#)
- 2 [Configuring Capricorn Software](#)
 - 2.1 [Accessing the Capricorn Configuration Window](#)
 - 2.2 [Capricorn Configuration Settings](#)

Configuring Capricorn Software

Accessing the Capricorn Configuration Window

Note:



In some cases, the Capricorn may be configured as a service. See [this guide](#) for instructions on how to launch the Capricorn if it is set up as a service.

1. To launch the HL7 Tray application, Go to **Start Menu, All Programs, Medical-Objects** and select the **Medical-Objects Capricorn**. Alternatively, You can go to **C:\MO\Capricorn** and run the **Capricorn.exe**.
2. The following icon will appear in the tray. Double click on it to bring up the log window.

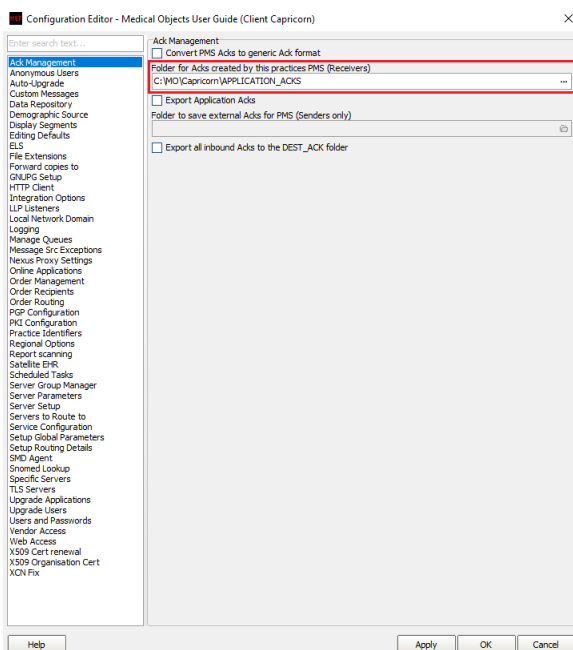


3. When the log window is displayed, Click on the **Configuration** icon highlighted below, or select **Utility** and select **Configuration**.



Capricorn Configuration Settings

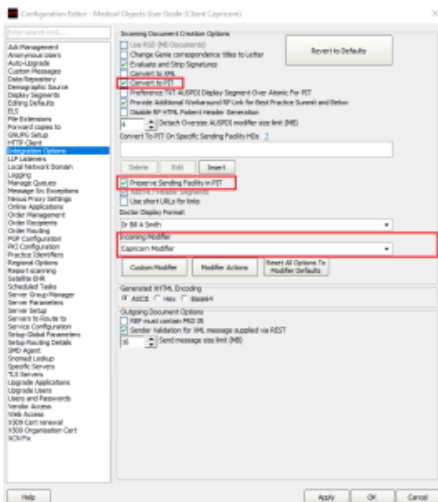
1. Click on **Ack Management**.
2. Make sure the **Application Acks** Path is set to **C:\MO\Capricorn\APPLICATION_ACKS**



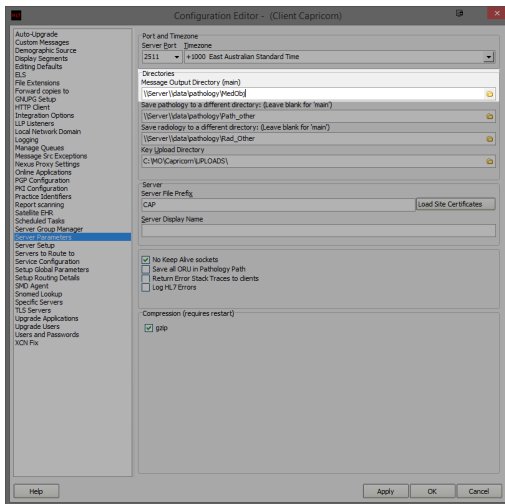
3. Click on **Integration Options**.
- 3.1 Check that the **Incoming Modifier** is set to **Capricorn Modifier**.

PLEASE NOTE:

 You will need to have the options **Convert to PIT** and **Preserve sending facility in PIT** checked.



4. Select **Server Parameters** from the left hand panel.
5. Set the main directory to **\\Server\data\pathology\MedObj** - or wherever the reports are currently set to import from. This directory may change depending on the practice's setup.



Note:

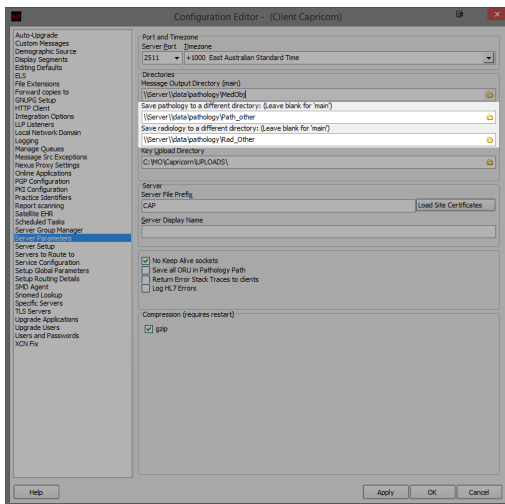


Please note that this path will need to be set up within Promadis as well.

- For Pathology and radiology, You will need to set a folder for each company sending to the practice through message src exceptions. First, set the folders as follows.

\\Server\\data\\pathology (Enter the name of the pathology company here, or leave as **Path_oth**)

\\Server\\data\\pathology (Enter the name of the Radiology company here, or leave as **Rad_Ot**)

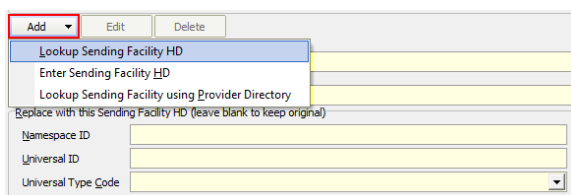


Note:

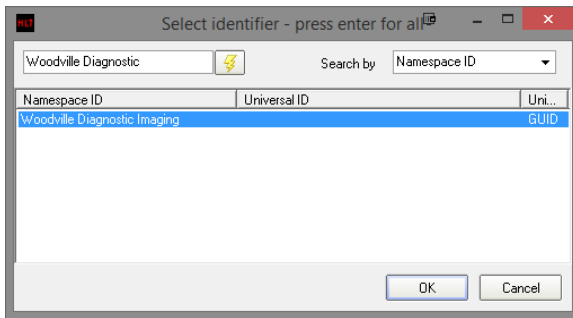


Please note that these paths will need to be set up within Promadis as well for each folder created.

- Select **Message Src Exceptions** from the left hand panel. Here you will need to add each Pathology/ Radiology company sending to the practice.
- Select the **Add** button highlighted below, and select **Lookup sending Facility HD**.



- Enter the name of the sending company - For Example, **Woodville Diagnostic Imaging**.



10. You will then be required to enter the save path for the files. Use the same file path structure, but name the folder accordingly.

eg: \\Server\data\pathology\Woodville

Note:



Please note that this path will need to be set up within Promadis as well for each sending Path and Rad company.

11. This will put all future messages from the sending company into the relating folder for Promadis to import.