

Mediflex

Overview:

This guide provides a basic guide on configuring both Medical-Objects Capricorn and Mediflex software to import electronic results.

If you require any assistance with the installation or configuration, or if you have any questions, please contact the Medical-Objects Helpdesk on (07) 5456 6000.

If you have not Installed the Medical-Objects Download client, Please see the guide for [Installing Capricorn on Windows](#).

- 1 [Overview:](#)
- 2 [Configuring Capricorn Software](#)
 - 2.1 [Accessing the Capricorn Configuration Window](#)
 - 2.2 [Capricorn Configuration Settings](#)
- 3 [Mediflex configuration](#)
- 4 [Importing into Mediflex](#)

Configuring Capricorn Software

Accessing the Capricorn Configuration Window

Note:



In some cases, the Capricorn may be configured as a service. See [this guide](#) for instructions on how to launch the Capricorn if it is set up as a service.

1. To launch the HL7 Tray application, Go to **Start Menu, All Programs, Medical-Objects** and select the **Medical-Objects Capricorn**. Alternatively, You can go to **C:\MO\Capricorn** and run the **Capricorn.exe**.
2. The following icon will appear in the tray. Double click on it to bring up the log window.



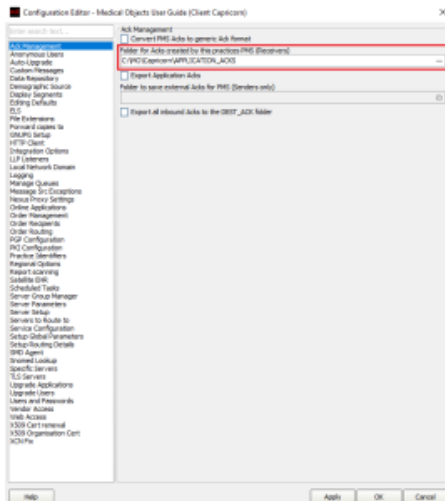
3. When the log window is displayed, Click on the **Configuration** icon highlighted below, or select **Utility** and select **Configuration**.



Capricorn Configuration Settings

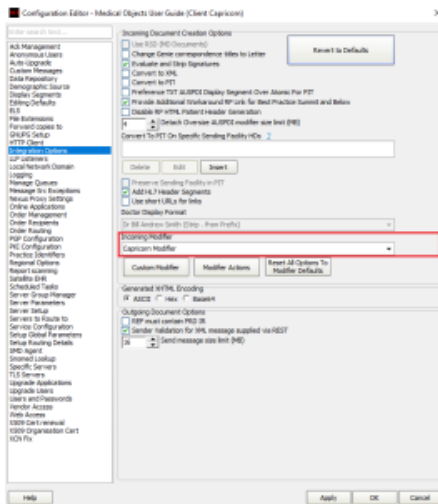
1. Click on **Ack Management**.

2. Set the **Ack Management** path to **C:\MO\Capricorn\APPLICATION_ACKS**



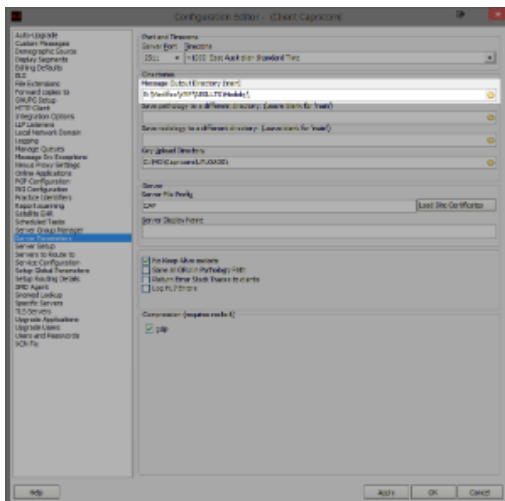
3. Click on **Integration Options**.

3.1 Make sure the **Incoming Modifier** is set to **Capricorn Modifier**.



4. Select **Server Parameters** from the left hand window.

5. Set the **Message Output Directory** to the drive Mediflex is installed on to. The folder will look similar to the following.



E:\Mediflex\VMF\RESULTS\Medobj\

Note:



You may have to create the **Medobj** folder.

6. Select **Apply** and **OK** to save your settings.

Mediflex configuration

1. Within Mediflex, Select the red **Address Book** from the top Toolbar.
2. Under the **Laboratories** section, Add the code **MEDOB** and input the details required for Medial-Objects. Set the directory to the path created earlier.

E:\Mediflex\VMF\RESULTS\Medobj\

3. Save and close.

Importing into Mediflex

Note:



Please note that Mediflex does not work with PDF's, and all results will have to be manually imported

Go to the clinical option in the toolbar and select **In Tray**. This is where results will appear. If they do not, They'll be under the **Mailbox** option.