

Medical Wizard

Overview:

This guide provides instruction on configuring both Medical-Objects Capricorn and Medical Wizard software to import electronic results.

If you require any assistance with the installation or configuration, or if you have any questions, please contact the Medical-Objects Helpdesk on (07) 5456 6000.

If you have not Installed the Medical-Objects Download client, Please see the guide for [Installing Capricorn on Windows](#).

1 Overview:

2 Configuring Capricorn Software


2.1 Accessing the Capricorn Configuration Window

2.2 Capricorn Configuration Settings

Configuring Capricorn Software

Accessing the Capricorn Configuration Window

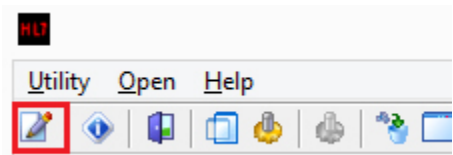
Note:

 In some cases, the Capricorn may be configured as a service. See [this guide](#) for instructions on how to launch the Capricorn if it is set up as a service.

1. To launch the HL7 Tray application, Go to **Start Menu, All Programs, Medical-Objects** and select the **Medical-Objects Capricorn**. Alternatively, You can go to **C:\MO\Capricorn** and run the **Capricorn.exe**.
2. The following icon will appear in the tray. Double click on it to bring up the log window.

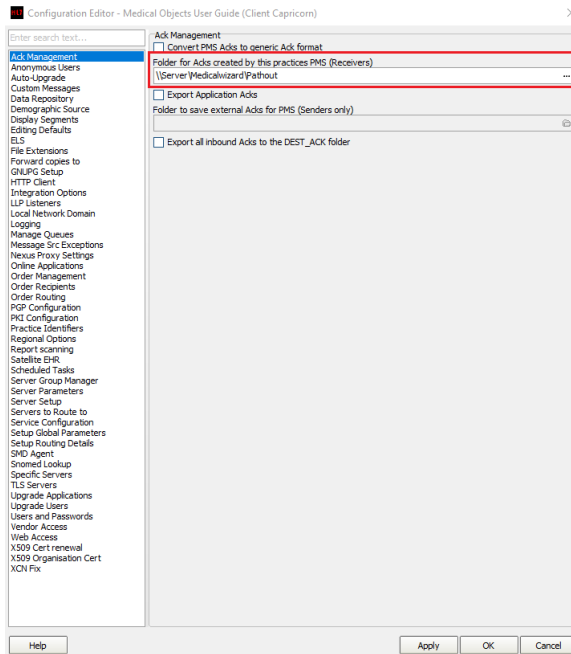


3. When the log window is displayed, Click on the **Configuration** icon highlighted below, or select **Utility** and select **Configuration**.



Capricorn Configuration Settings

1. Click on **Ack Management**.

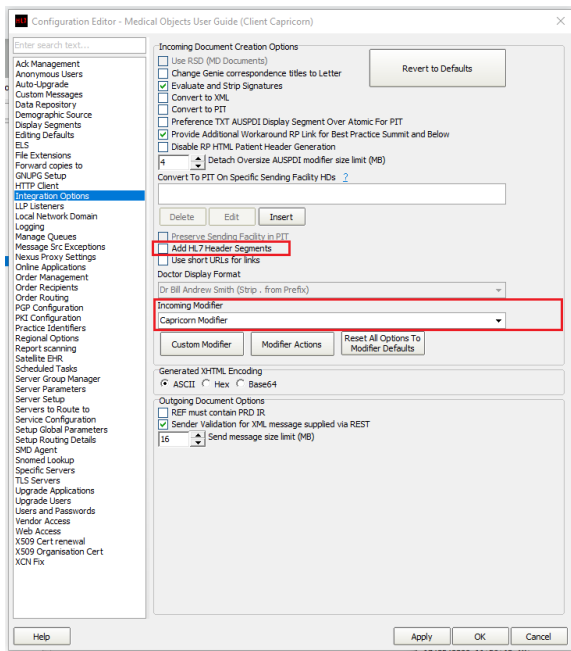


2. Set the **Ack Management** Path to the Medical Wizard **Pathout** folder. Use a **UNC file path** if possible. For example: \\Server\\Medicalwizard\\Pathout

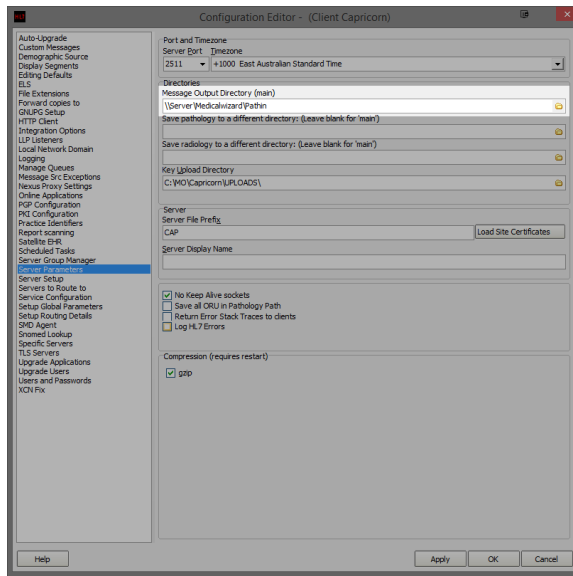
3. Click on **Integration Options**.

3.1 Check that the **Incoming Modifier** is set to **Capricorn Modifier**.

3.2 Add **HL7 Header Segments** will need to be unticked.



4. Select **Server Parameters** from the left hand panel.



Set the **Message output directory** to Medical Wizards **Pathin** folder. **Use a UNC file path if possible**. For example: **\\Server\\Medicalwizard\\Pathin**

5. Results should begin importing into Medical Wizard.