

CompuDoc

Overview

This guide provides a basic overview on how to configure the Medical-Objects Download Client (Capricorn) to drop off results for CompuDoc software.

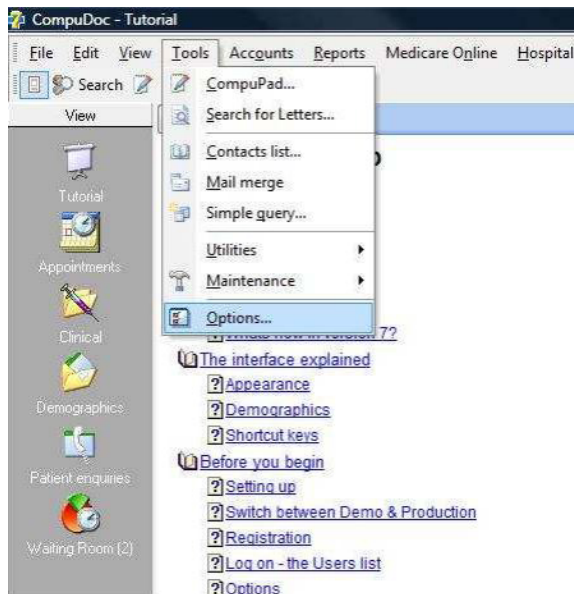
If you require any assistance with the installation or configuration, or if you have any questions, please contact the Medical-Objects Helpdesk on (07) 5456 6000.

If you have not Installed the Medical-Objects Download client, Please see the guide for [Installing Capricorn on Windows](#).

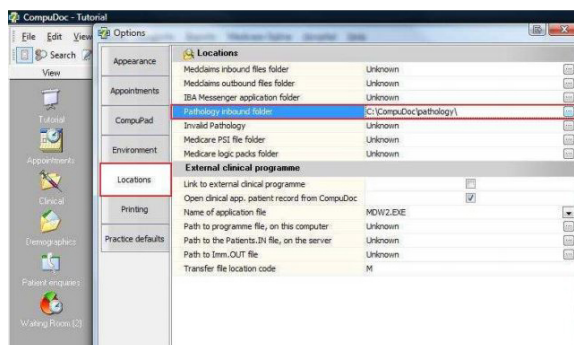
- 1 [Overview](#)
- 2 [Finding the CompuDoc File path](#)
- 3 [Configuring the Capricorn](#)
 - 3.1 [Accessing the Capricorn Configuration Window](#)
 - 3.2 [Capricorn Configuration Settings](#)

Finding the CompuDoc File path

1. Open CompuDoc on the server, and choose **Tools**, and then click **Options**.



2. Click on the **Locations** box on the right hand side.



3. Here you can see the file path that CompuDoc is set to pick up the results from.

Note:

If there is no path chosen in the **Location** tab, then choose the default path **C:\CompuDoc\Pathology**.

Configuring the Capricorn

Accessing the Capricorn Configuration Window

Note:



In some cases, the Capricorn may be configured as a service. See [this guide](#) for instructions on how to launch the Capricorn if it is set up as a service.

1. To launch the HL7 Tray application, Go to **Start Menu, All Programs, Medical-Objects** and select the **Medical-Objects Capricorn**. Alternatively, You can go to **C:\MO\Capricorn** and run the **Capricorn.exe**.
2. The following icon will appear in the tray. Double click on it to bring up the log window.

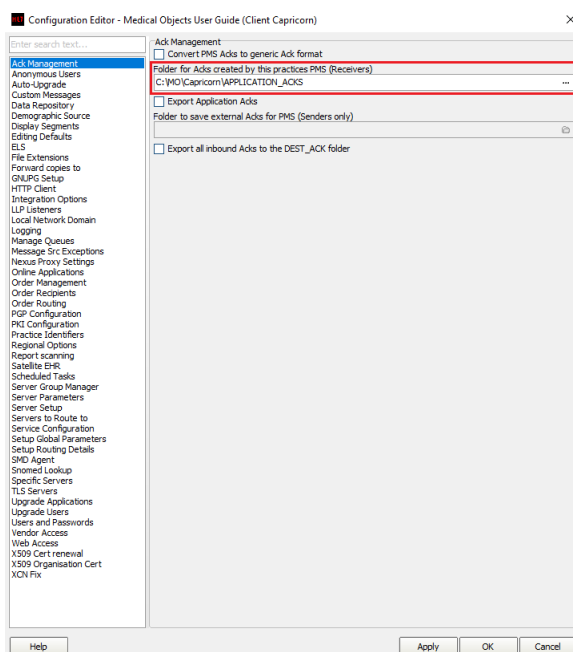


3. When the log window is displayed, Click on the **Configuration** icon highlighted below, or select **Utility** and select **Configuration**.



Capricorn Configuration Settings

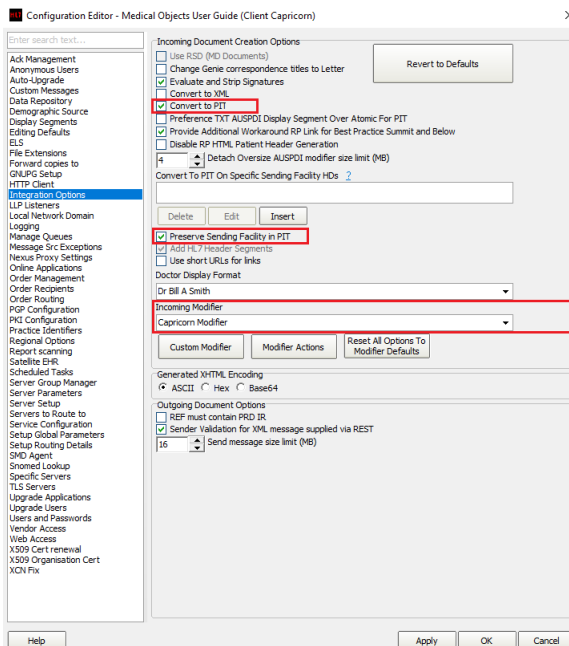
1. Click on **Ack Management**



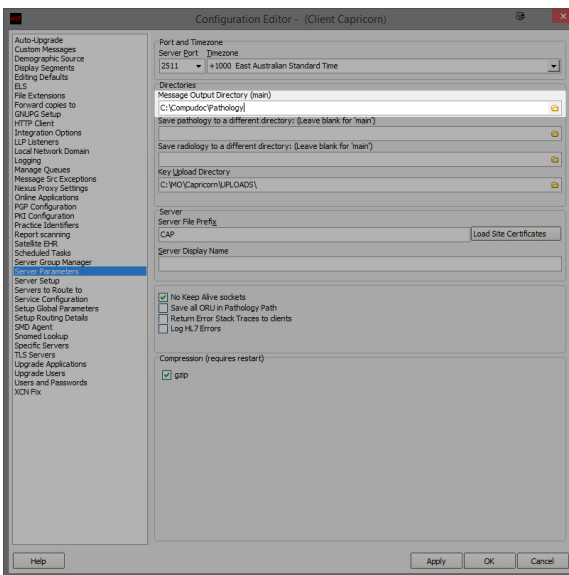
The **Ack Management** path should be set as follows:

C:\MO\Capricorn\APPLICATION_ACKS

2. Click on Integration Options.
 - 2.1 Check that the Incoming Modifier is set to **Capricorn Modifier**.
 - 2.2 Tick the boxes **Convert to PIT** and **Preserve Sending Facility in PIT**.



3. Click on **Server Parameters** in the left hand panel.



The **Message Output Directory** to the import directory for CompuDoc outlined in the previous instructions. For this example, we'll use the following:

C:\CompuDoc\Pathology

The configuration is complete. CompuDoc should automatically begin importing results.