

# MedTech32

## Overview

This guide provides instruction on configuring both Medical-Objects Capricorn and MedTech32 to import electronic results.

If you require any assistance with the installation or configuration, or if you have any questions, please contact the Medical-Objects Helpdesk on (07) 5456 6000.

If you have not Installed the Medical-Objects Download client, Please see the guide for [Installing Capricorn on Windows](#).

- 1 Overview
- 2 Configuring Capricorn Software
  - 2.1 Accessing the Capricorn Configuration Window
  - 2.2 Capricorn Configuration Settings
- 3 MedTech32 Configuration
- 4 Viewing Imported Results

## Configuring Capricorn Software

### Accessing the Capricorn Configuration Window

**Note:**

In some cases, the Capricorn may be configured as a service. See [this guide](#) for instructions on how to launch the Capricorn if it is set up as a service.

1. To launch the HL7 Tray application, Go to **Start Menu, All Programs, Medical-Objects** and select the **Medical-Objects Capricorn**. Alternatively, You can go to **C:\MO\Capricorn** and run the **Capricorn.exe**.
2. The following icon will appear in the tray. Double click on it to bring up the log window.

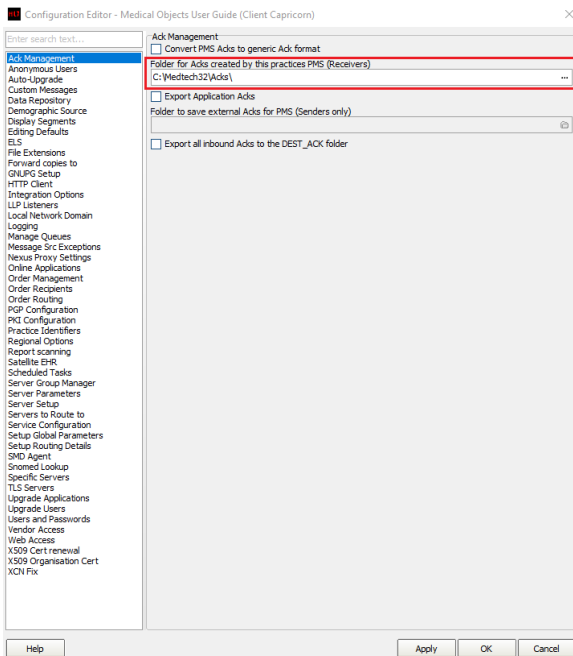


3. When the log window is displayed, Click on the **Configuration** icon highlighted below, or select **Utility** and select **Configuration**.



## Capricorn Configuration Settings

1. Click on **Ack Management**.

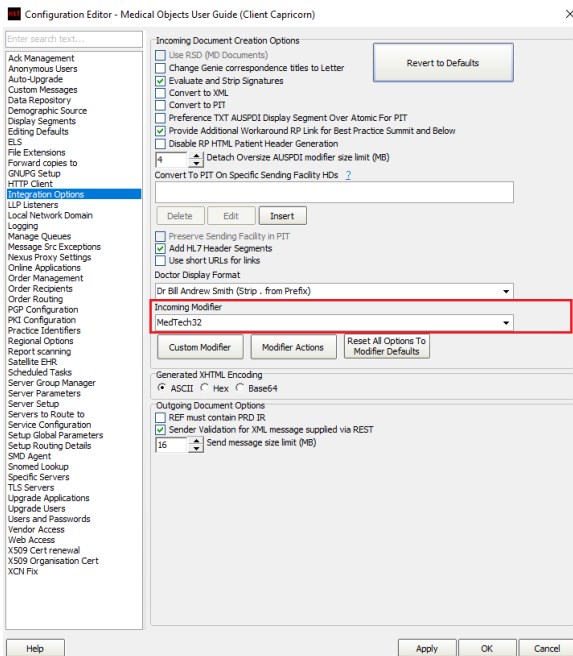


2. Set the **Ack Management** path to the local import folder on the server or the network path on a workstation that points to the server import folder, For example:

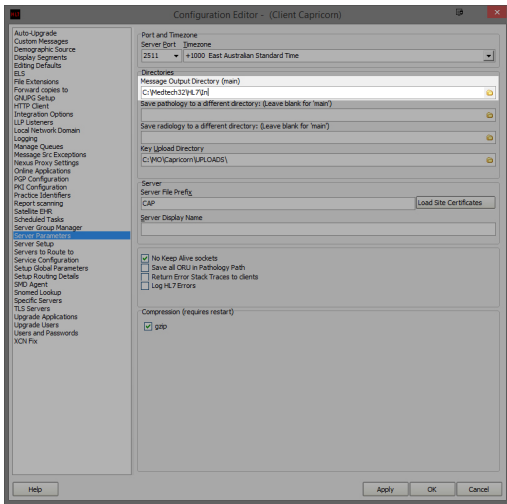
(Capricorn installed on the server) --> C:\Medtech32\Acks\

(Capricorn installed on the Workstation) --> \\server\Medtech32\Acks\

3. Click on **Integration Options**.  
3.1 Check that the **Incoming Modifier** is set to MedTech32



4. Click on **Server Parameters** in the left hand side panel.



- Under the **Message Output Directory (Main)** set the results import path.

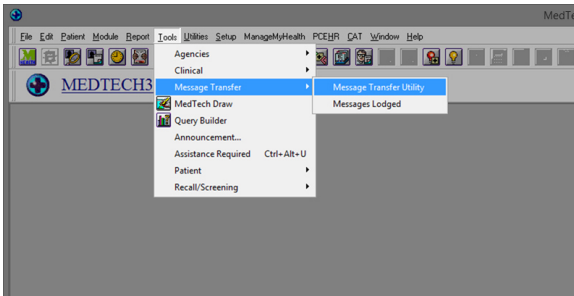
```
(Capricorn installed on the server) --> C:\Medtech32\HL7\In

(Capricorn installed on the Workstation) -->
\\server\Medtech32\HL7\In
```

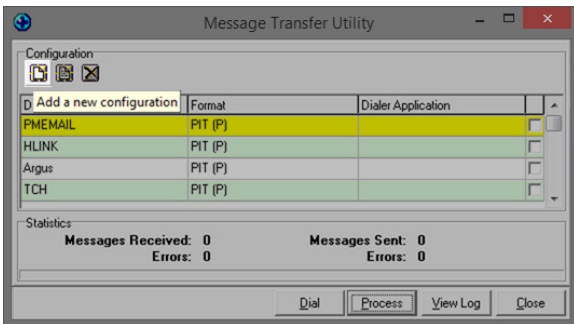
- Click **Apply / OK**. Capricorn configuration is complete.

## MedTech32 Configuration

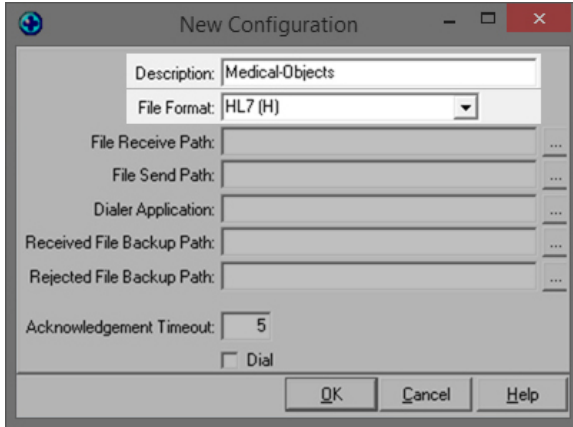
- Open the MedTech32 software. In the toolbar, Select **Tools > Message Transfer > Message Transfer Utility**.



- Select the **Add New Configuration** button highlighted below.



- This will open the New Configuration window. In Description, Type **Medical-Objects**. make sure that the File Format is set to **HL7(H)**.



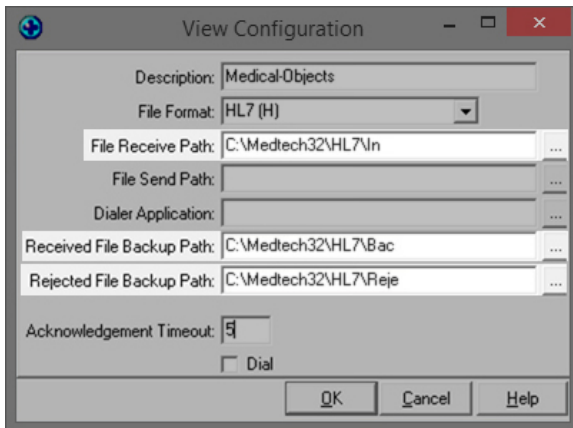
- You will want to configure the file paths to the correct folder:

```
File Recieved Path:      --> C:\Medtech32\HL7\In
Received File backup Path --> C:\Medtech32\HL7\Bac
Rejected File Backup Path --> C:\Medtech32\HL7\Reje
```

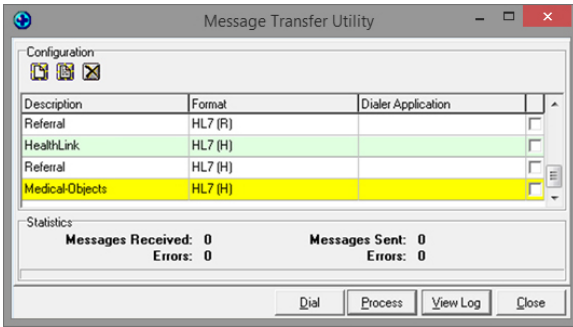
For Medtech Evolution, Please use the C:\Mo\Results\... directory. Make sure you are using UNC paths.

```
File Recieved Path      --> \\server\Mo\Results\In
Received File backup Path --> \\server\Mo\Results\Bac
Rejected File Backup Path --> \\server\Mo\Results\Reje
```

Done correctly, It should look like the image below.



- You should see Medical-Objects in the **Message Transfer Utility** List. Click the process button to import.

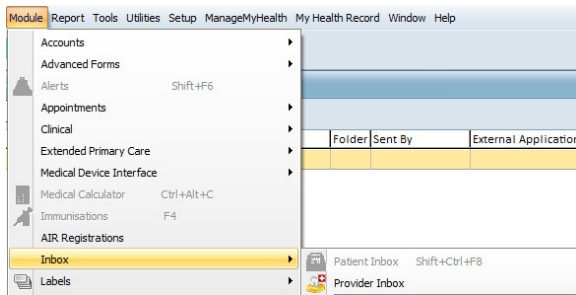


**Note:**

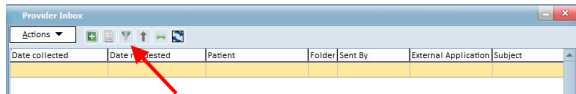
Please note that you will also need to configure the Import paths and the scheduler on the Server. Please see [this guide](#) on how to do this.

## Viewing Imported Results

Module Inbox Provider Inbox



Choose the filter button and set the date range and Attention field (it may be best to set this to "All(\*)").



**Filter Provider Inbox** [X]

Attention: All (\*) ▾  
 Filed Results Only

Provider: All (\*) ▾

Folder: All (\*) ▾

Abnormalities: All (\*) ▾

Subject: All (\*) ▾  
 With no corresponding report

Date From: 06 Mar 2003 ▾ ←

Date To: 06 Sep 2017 ▾

Unmatched patient records only  
 Unmatched provider results only

Containing Text:

Include Inactive