

MedTech32

Overview

This guide provides instruction on configuring both Medical-Objects Capricorn and MedTech32 to import electronic results.

If you require any assistance with the installation or configuration, or if you have any questions, please contact the Medical-Objects Helpdesk on (07) 5456 6000.

If you have not Installed the Medical-Objects Download client, Please see the guide for [Installing Capricorn on Windows](#).

- 1 Overview
- 2 Configuring Capricorn Software
 - 2.1 Accessing the Capricorn Configuration Window
 - 2.2 Capricorn Configuration Settings
- 3 MedTech32 Configuration
- 4 Viewing Imported Results

Configuring Capricorn Software

Accessing the Capricorn Configuration Window

Note:

In some cases, the Capricorn may be configured as a service. See [this guide](#) for instructions on how to launch the Capricorn if it is set up as a service.

1. To launch the HL7 Tray application, Go to **Start Menu, All Programs, Medical-Objects** and select the **Medical-Objects Capricorn**. Alternatively, You can go to **C:\MO\Capricorn** and run the **Capricorn.exe**.
2. The following icon will appear in the tray. Double click on it to bring up the log window.

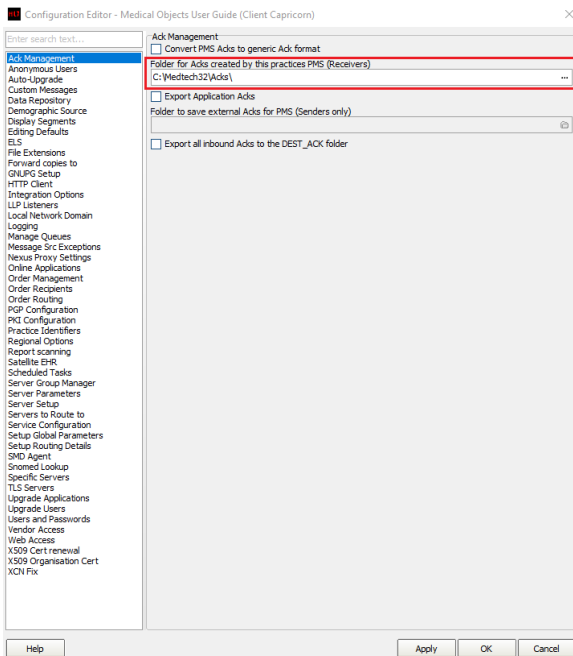


3. When the log window is displayed, Click on the **Configuration** icon highlighted below, or select **Utility** and select **Configuration**.



Capricorn Configuration Settings

1. Click on **Ack Management**.

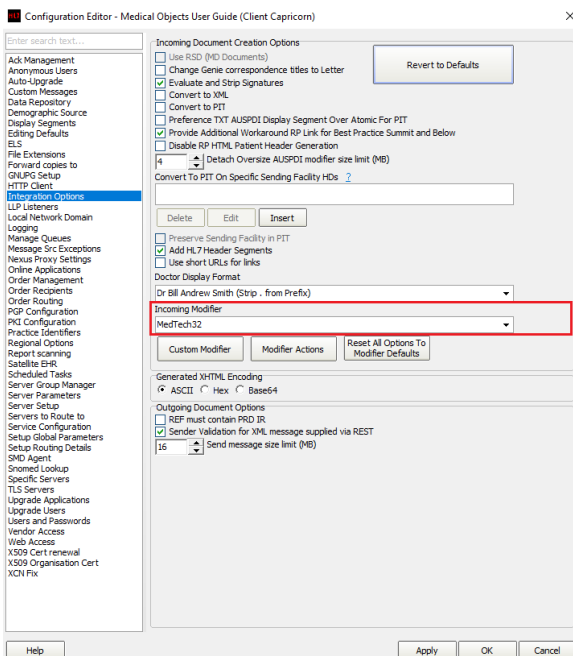


2. Set the **Ack Management** path to the local import folder on the server or the network path on a workstation that points to the server import folder, For example:

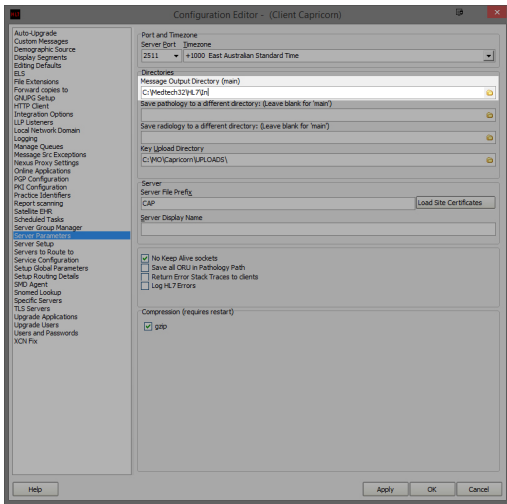
(Capricorn installed on the server) --> C:\Medtech32\Acks\

(Capricorn installed on the Workstation) --> \\server\Medtech32\Acks\

3. Click on **Integration Options**.
 - 3.1 Check that the **Incoming Modifier** is set to MedTech32



4. Click on **Server Parameters** in the left hand side panel.



- Under the **Message Output Directory (Main)** set the results import path.

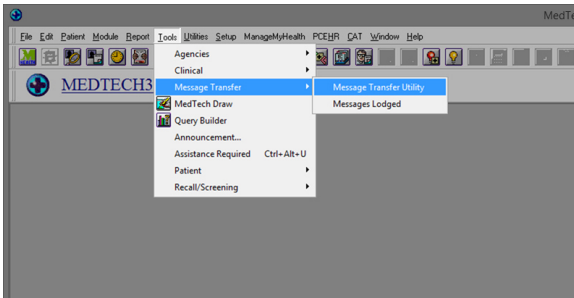
```
(Capricorn installed on the server) --> C:\Medtech32\HL7\In

(Capricorn installed on the Workstation) -->
\\server\Medtech32\HL7\In
```

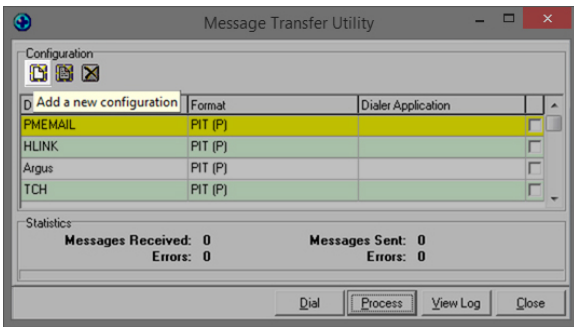
- Click **Apply / OK**. Capricorn configuration is complete.

MedTech32 Configuration

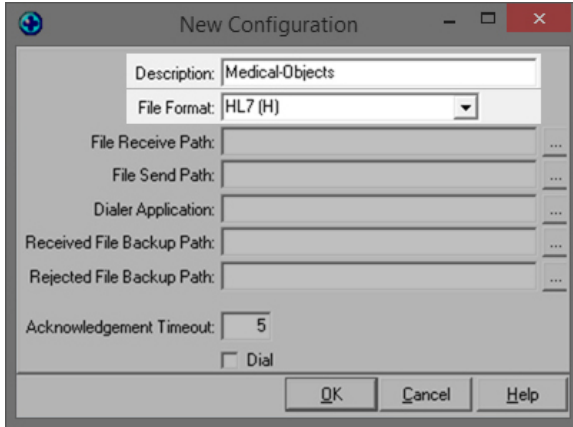
- Open the MedTech32 software. In the toolbar, Select **Tools > Message Transfer > Message Transfer Utility**.



- Select the **Add New Configuration** button highlighted below.



- This will open the New Configuration window. In Description, Type **Medical-Objects**. make sure that the File Format is set to **HL7(H)**.



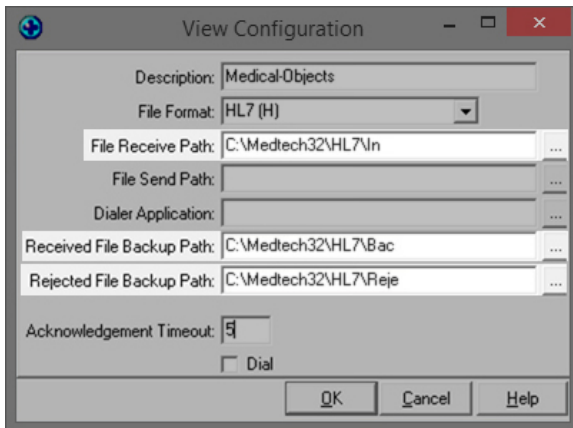
- You will want to configure the file paths to the correct folder:

```
File Recieved Path:      --> C:\Medtech32\HL7\In
Received File backup Path --> C:\Medtech32\HL7\Bac
Rejected File Backup Path --> C:\Medtech32\HL7\Reje
```

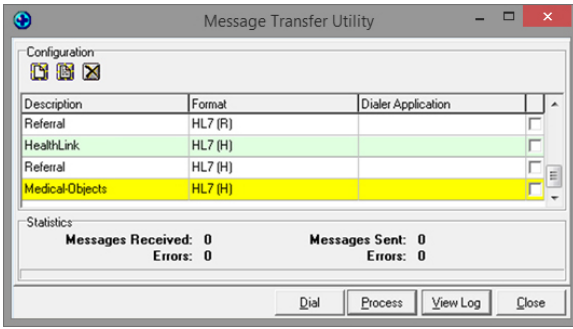
For Medtech Evolution, Please use the C:\Mo\Results\... directory. Make sure you are using UNC paths.

```
File Recieved Path      --> \\server\Mo\Results\In
Received File backup Path --> \\server\Mo\Results\Bac
Rejected File Backup Path --> \\server\Mo\Results\Reje
```

Done correctly, It should look like the image below.



- You should see Medical-Objects in the **Message Transfer Utility** List. Click the process button to import.

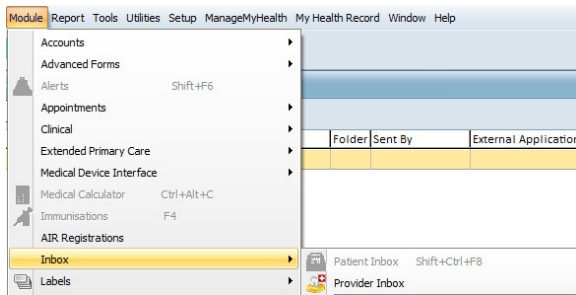


Note:

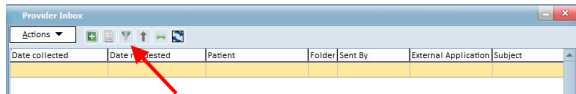
Please note that you will also need to configure the Import paths and the scheduler on the Server. Please see [this guide](#) on how to do this.

Viewing Imported Results

Module Inbox Provider Inbox



Choose the filter button and set the date range and Attention field (it may be best to set this to "All(*)").



Filter Provider Inbox [X]

Attention: **All (*)** [v]
 Filed Results Only

Provider: All (*) [v]

Folder: All (*) [v]

Abnormalities: All (*) [v]

Subject: All (*) [v]
 With no corresponding report

Date From: 06 Mar 2003 [v] ←

Date To: 06 Sep 2017 [v]

Unmatched patient records only
 Unmatched provider results only

Containing Text:

Include Inactive

[OK] [Cancel] [Help]