

PPMP

Overview

This guide provides basic instructions for configuring the Medical-Objects Download Client (Capricorn) With PPMP Software. PPMP versions 8.13 and above have the ability to automatically import PDF files delivered through Medical-Objects.

If you require any assistance with the installation or configuration, or if you have any questions, please contact the Medical-Objects Helpdesk on (07) 5456 6000.

If you have not Installed the Medical-Objects Download client, Please see the guide for [Installing Capricorn on Windows](#).

- 1 [Overview](#)
- 2 [Configuring the Capricorn Download Client](#)
- 3 [How to configure PDF import using PPMP](#)
- 4 [How to view incoming PDF's in PPMP](#)
- 5 [How to manually match a file to the patient record](#)

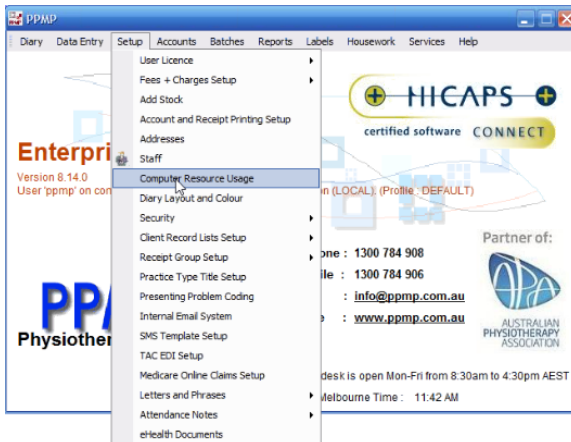
Configuring the Capricorn Download Client

Note:

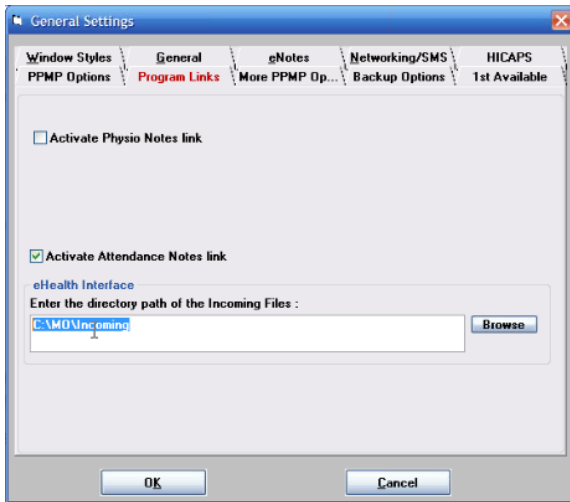
PPmP requires files to be dropped off from the Medical-Objects Capricorn in PDF format. You can find the instructions [here](#).

Once the Capricorn is configured, continue with the following steps.

1. Click **Setup** and **Computer Resource Usage** from the main PPMP menu.



2. Click the **ProgramLinks** Tab. The eHealth Interface directory is set here. In this example we are using the path **C:\MO\Incoming**.



3. If the path is not set in PPMP , you can set it now, and configure Capricorn to save PDF to the same directory.

How to configure PDF import using PPMP

The PPMP software runs a background task called **EhealthTrayApplication** which automatically polls the Medical-Objects import directory for PDF files to import.

Background processes (59)

Process Name	Private Bytes	Working Set	Private Bytes/s	Working Set/s
EHealthTrayApplication (32 bit)	0%	1.4 MB	0 MB/s	0 MBps
Google Chrome (32 bit)	0%	15.1 MB	0 MB/s	0 MBps
Google Chrome (32 bit)	0%	25.5 MB	0 MB/s	0 MBps

This application is configured to run in the Scheduled Tasks section of Windows. It will automatically check to see if it is running every 15 mins. If the application is not running, the scheduled task will automatically restart the application.

To configure the settings for the **EhealthTrayApplication.exe** navigate to the PPMP Directory:

C:\Program Files (x86)\PPMP\Tools\Ehealth\PPMPEHealthSettings.ini (64 Bit)

C:\Program Files\PPMP\Tools\Ehealth\PPMPEHealthSettings.ini (32 Bit)

The settings can be changed by opening the file named **PPMPEHealthSettings.ini**.

```

[Setup]
ServerName=(local)
DatabaseName=PPMData
UserID=ppmp
Password=ppmp
TrustedConnection=No
EHealthInterval=1 Minutes Import Interval
EHealthShowNotifications=True
EHealthLogging=True
EHealthCompany=1
EHealthIncomingDirectory=C:\MO\Incoming Import Directory
EHealthIncomingFileExtension=.PDF
PPMPINIDirectory=C:\Program Files (x86)\PPMP

```

Set the Import Directory to the same path where you have configured the Download Client to save the PDF's to. In this example we are using the path **C:\MO\Incoming**.

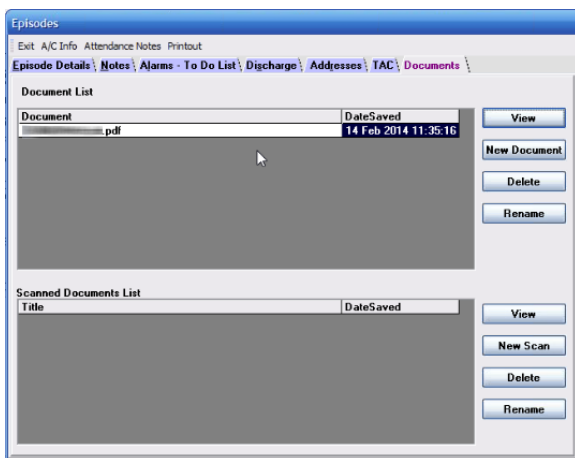
How to view incoming PDF's in PPMP

PPMP is configured to automatically import and match Medical-Objects PDF's to the patient record. Medical-Objects saves the files to the output directory using the syntax **SURNAME_Firstname.pdf**

To view the received PDF,

1. Open the Patient file in PPMP and choose **Episodes** from the Menu.
2. Click on the **Documents** tab.
3. You will then see the **PDF** in the Document list. From here you can choose to **View**, **Delete**, or **Rename** the document.

If you do not see the file in the document list you may have to close the window and re-enter.

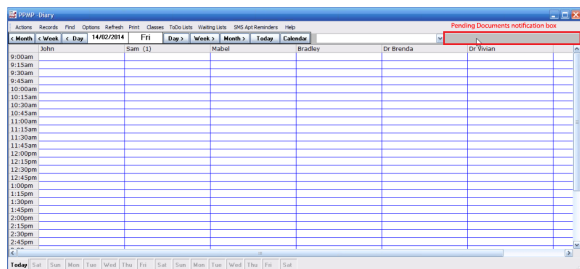


Note:

If the received PDF does not meet the **SURNAME_Firstname** syntax described above, the files will have to be manually assigned to the patient. See the instructions below.

How to manually match a file to the patient record

If PPMP cannot determine which patient to automatically assign the files to, you will see a notification that there are documents awaiting processing in the **Diary** window.

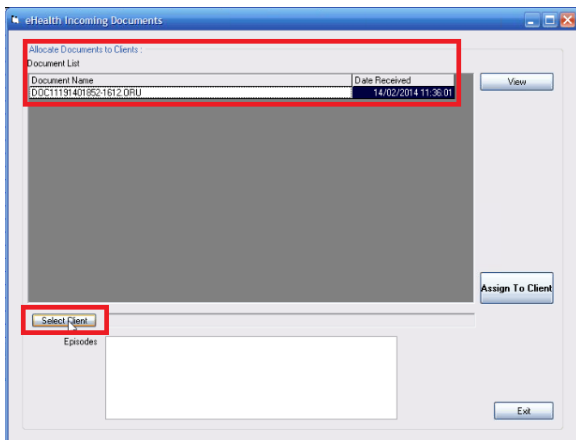


To manually assign a document to a patient,

1. Click **Setup** and choose **eHealth Documents**



2. You will see a list of unmatched documents in the Document list window, choose the document you wish to match and click **Select Client**.



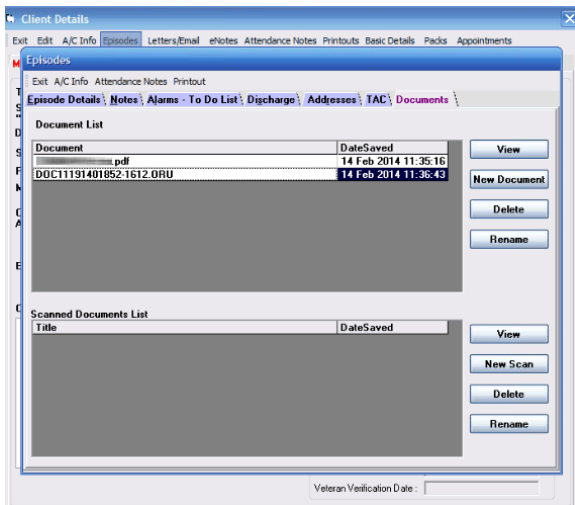
3. Lookup your patient and click the **OK** button.

The screenshot shows a dialog box titled "Choose a Client". At the top, it says "Name to Find OR the Required Client No." followed by a text input field. Below this are "Search" and "Search Tips" buttons. A "1 match" indicator is visible. A large empty list box is on the left. On the right, there are several checkboxes: "Client Number" (checked), "Invoice Number", "Chart Number", "First Name", "Last Name" (checked), "Addresses", "Phone Numbers", "Email Address", "Postcode", and "Date of Birth". Below the checkboxes are buttons for "Ok", "Cancel", "Clear List", "View Record", and "Add New Client". At the bottom left, there is a section for "Selected Client's Address" with a text input field.

4. The client name will now be listed next to the **Select Client** button, you then simply choose an episode type from the list and click the '**Assign To Client**' button to match the result to the patient.

The screenshot shows a dialog box titled "eHealth Incoming Documents". It has a "Document List" table with columns "Document Name" and "Date Received". The table contains one row: "DOC111914016521612 ORU" and "14/02/2014 11:38:01". There is a "View" button next to the table. Below the table is an "Assign To Client" button. At the bottom left, there is a "Select Client" button and a list box. The list box has a header "Episodes" and one item "Shoulder Complaint" which is highlighted. A red rectangle is drawn around the list box. At the bottom right, there is an "Exit" button.

- Now go back to the patient record and choose **Episodes** from the menu. In the **Documents** tab you should now see the result you matched to the patient.



If you do not see the file in the document list you may have to close the window and re-enter.