

Genie

Overview

This guide provides an overview on configuring the Medical-Objects Download Client (Capricorn) and Genie Software to import electronic results. This process is based on the Microsoft Windows environment.

If you require any assistance with the installation or configuration, or if you have any questions, please contact the Medical-Objects Helpdesk on (07) 5456 6000.

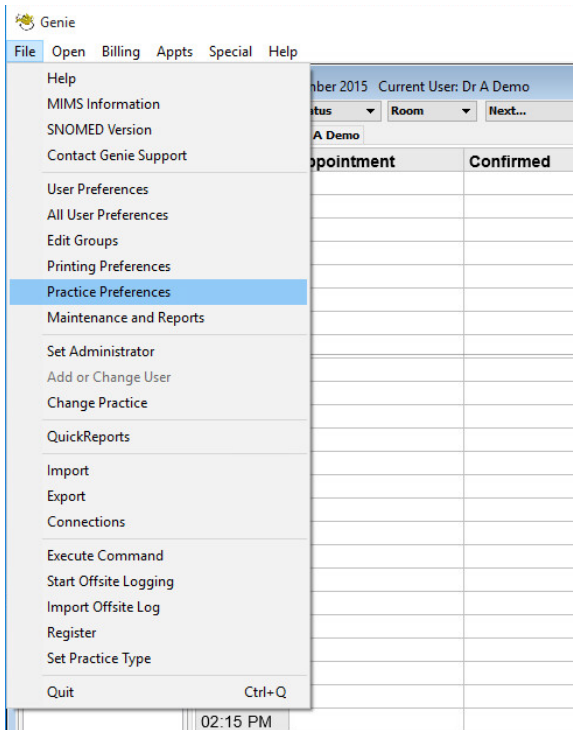
If you have not Installed the Medical-Objects Download client, Please see the guide for [Installing Capricorn on Windows](#).

- 1 [Overview](#)
- 2 [Genie Auto import Pre-Configuration Check](#)
- 3 [Capricorn Configuration](#)
 - 3.1 [Accessing the Capricorn Configuration Window](#)
 - 3.2 [Capricorn Configuration Settings](#)
 - 3.3 [Manage Queues Configuration](#)

Genie Auto import Pre-Configuration Check

Prior to installing the Medical-Objects Capricorn, the following must be checked and the installation performed accordingly to allow Genie to automatically import the results received via Medical-Objects.

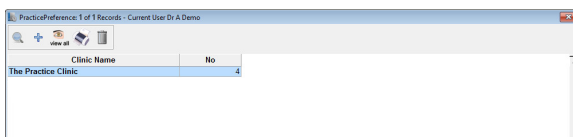
1. Log into Genie and click on **File**, and select **Practice Preferences**.



2. Select the Practice whose configuration you want to check.

Important:

Multiple clinics can be listed in the **Practice Preference** screen. Ensure you select the correct clinic.



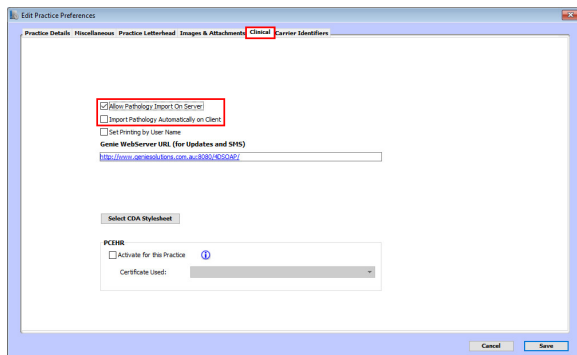
3. On the **Practice Configuration** window, Find the practice that you want to check the auto-import settings for in the clinic name column and double click the entry.
4. In the **Edit Practice Preferences** window, click on the **Clinical** tab. Note the checkboxes named **Allow Pathology Import on Server** and **Import Pathology Automatically on Client**.

Important

Only one option may be selected so Genie can only automatically import from *EITHER* the Server or the workstation. It is strongly recommended that the Capricorn be installed, or setup to save results to, either the workstation or the server depending on which checkbox is currently selected in the clinical tab of the **Practice Preferences**. It is *NOT* recommended that the settings be changed inside Genie as this could affect other download clients which may be installed and working on the Network.

Example: As we can see in the screenshot below Genie is set to import results on the Server, If you are required to install the Medical-Objects Capricorn on a Genie client workstation then it must be set to download the results across the network to the Genie server to allow Genie to automatically import the downloaded results.

If Genie is set to import from the server and results are downloaded to a workstation, then a manual import must be run from the Genie client installed on the workstation where the results are downloaded and vice versa.



Capricorn Configuration

Accessing the Capricorn Configuration Window

Note:

In some cases, the Capricorn may be configured as a service. See [this guide](#) for instructions on how to launch the Capricorn if it is set up as a service.

1. To launch the HL7 Tray application, Go to **Start Menu, All Programs, Medical-Objects** and select the **Medical-Objects Capricorn**. Alternatively, You can go to **C:\MO\Capricorn** and run the **Capricorn.exe**.
2. The following icon will appear in the tray. Double click on it to bring up the log window.

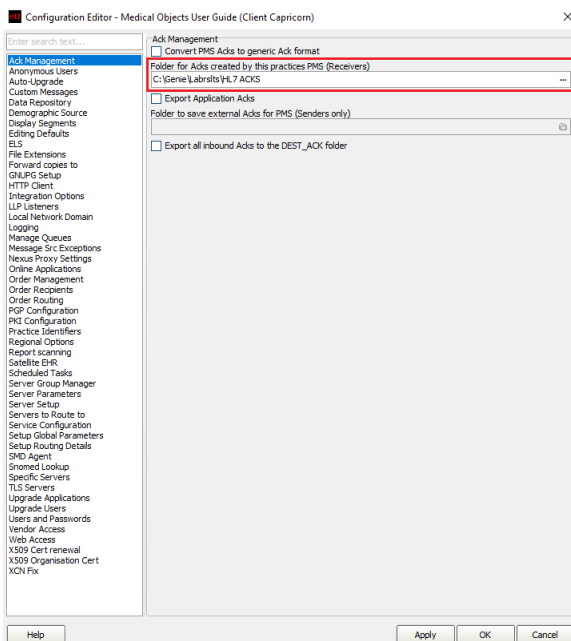


- When the log window is displayed, Click on the **Configuration** icon highlighted below, or select **Utility** and select **Configuration**.



Capricorn Configuration Settings

- Click on **Ack Management**.



- Set the **ACK Management** path as below:

```
(Capricorn installed on a Genie Server Machine) --> C:
\Genie\Labrslts\H17 ACKS
(Capricorn installed on a Genie Client Machine) -->
\\server\Genie\Labrslts\H17 ACKS\
```

Note:

If the folder does not exist, You must create it.

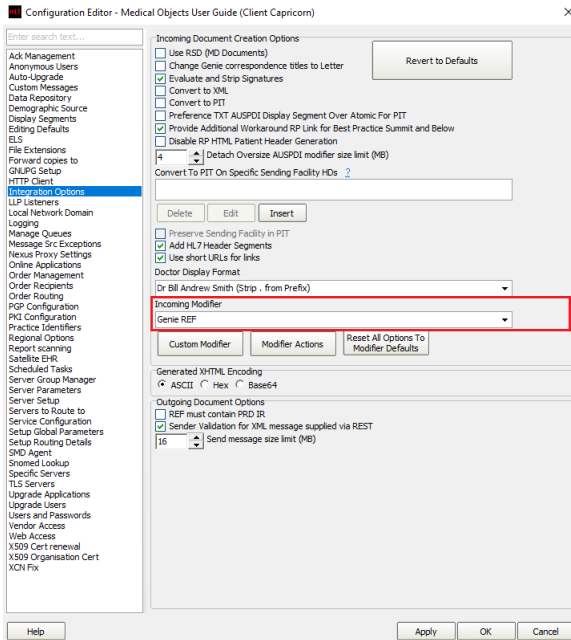
- Click on **Integration Options**.
- You will now need to set the incoming modifier. There are a few options to choose from depending on what the practices preferences are and the version of Genie in use.

Genie V8: Puts all incoming correspondence into Pathology and Radiology. For Genie versions 8 and above.

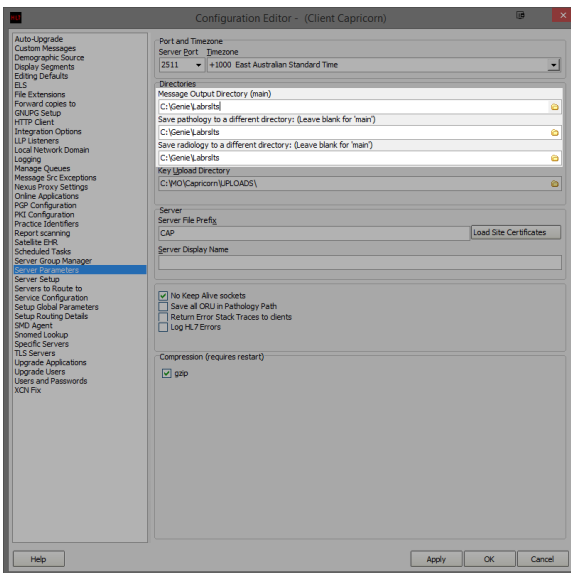
Genie REF V8: Splits incoming correspondence between Pathology and Radiology and Incoming Letters as appropriate. For Genie versions 8 and above.

Genie: Puts all incoming correspondence into Pathology and Radiology. For Genie versions before 8.

Genie REF: Splits incoming correspondence between Pathology and Radiology and Incoming Letters as appropriate. For Genie versions before 8



5. Select **Server Parameters** from the left panel.



6. The paths above are set as follows:

(Capricorn installed on a Genie Server Machine) -->

```
Message Output Directory --> C:\Genie\Labrslts\
Save Pathology           --> C:\Genie\Labrslts\
Save Radiology           --> C:\Genie\Labrslts\
```

(Capricorn installed on a Genie Client Machine) -->

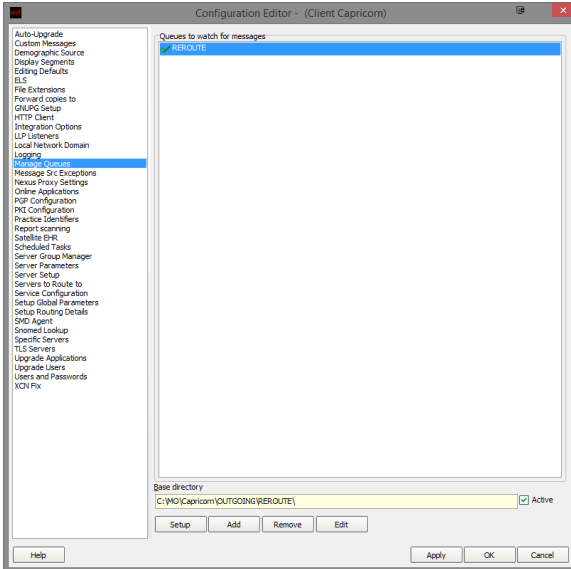
```
Message Output Directory --> \\server\Genie\Labrslts\
Save Pathology           --> \\server\Genie\Labrslts\
Save Radiology           --> \\server\Genie\Labrslts\
```

Make Sure that **Save all ORU in Pathology Path** is **UNTICKED**

7. The Medical-Objects configuration is complete. Click **Apply** and **OK**.

Manage Queues Configuration

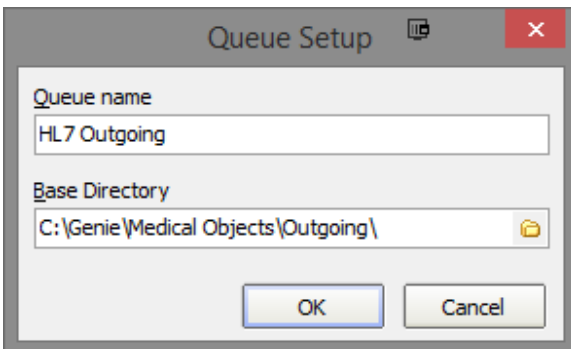
1. Click on **Manage Queues** in the left hand side panel.



2. Click **Add**.

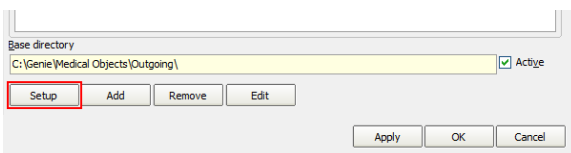
Enter **HL7 Outgoing** for the Queue name.

Enter **C:\Genie\Medical Objects\Outgoing** for the Base Directory.

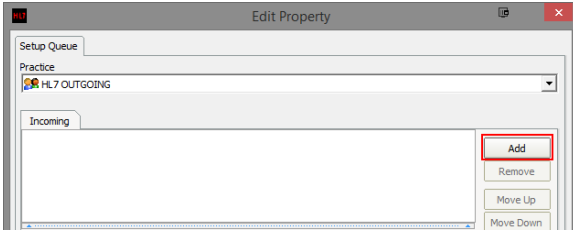


Please make sure any duplicate Medical Objects Outgoing folders are removed across the network. These will affect document delivery.

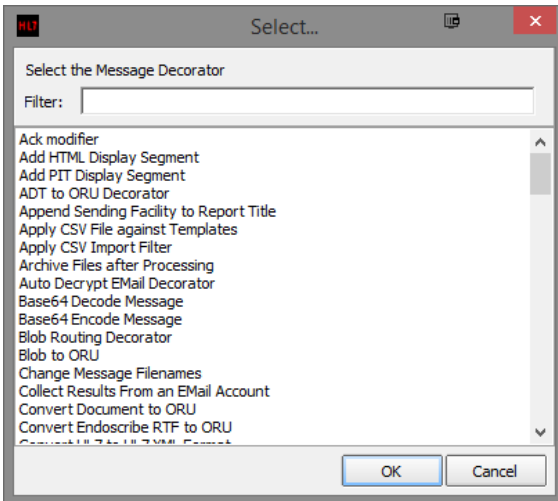
3. Click on **HL7 OUTGOING** in the **Queues to watch for messages** pane and then click on **Setup**.



4. Click on **Add** in the window that appears and choose the following decorator from the menu that appears.



Specify File Mask



Note:

For this particular decorator, When you are returned to the queue building screen you will have to set ***.HL7 (HL7 Messages)** from the drop down for that Decorator.

5. Repeat **Step 4** for the following decorators.

Note:

You must do them in sequence.

Strip Illegal Characters
Move ACKs to Application ACK Folder
Fix REF Message
Modify Message with HL7 Script --> Use Code Snippet Following
Route with Capricorn

```

//Genie currently doesn't populate MO IDs in the correct fields.
program GenieMOIDs;
var
  i: Integer;
  recipient: string;
begin
  for i := 0 to HL7Data.SegmentCount - 1 do
  begin
    if SameText(HL7Data.SegmentName[i], 'MSH') then
    begin
      recipient := HL7Data.GetFieldValue(i, 5, 0, 0, 0);
      break;
    end;
  end;
  if ValidateMedicalObjectsID(recipient, false) then
  begin
    for i := 0 to HL7Data.SegmentCount - 1 do
    begin
      if SameText(HL7Data.SegmentName[i], 'PRD') and SameText
(HL7Data.GetFieldValue(i, 1, 0, 0, 0), 'RT') then
      begin
        HL7Data.SetFieldValue(recipient, i, 7, 0, 0,
0);
        end;
      if SameText(HL7Data.SegmentName[i], 'PV1') then
      begin
        HL7Data.SetFieldValue(recipient, i, 9, 0, 0, 0);
        end;
      end;
    end;
  end;
end.

```



Historically **Convert REF message to ORU** format was part of the queue before **Route with Capricorn** but is no longer needed for new configurations.

Note:

If you need to change the order of the decorators, you can click on the decorator in the queue and use the arrow buttons on the right hand side of the screen to change their priority.

If you get an error at anytime sending from Genie that looks similar to the following: **EFTInvalidFormatCode:Invalid escape sequence format code ".RTF"** then you will have to add the following decorator after the **Strip Illegal Characters Decorator**.

Modify Message with HL7 Script

Once you have added the Decorator, add to it the following code in its main settings box just under the **Edit** button.

```

Program Test;
var i:Integer;
    s : String;
    OBXStart: Integer;
begin
    //HL7 Data is a precreated object with the HL7Data loaded
    OBXStart := HL7Data.IndexofSegment('OBX');
    writeln('OBX Index is '+ inttostr(OBXStart));
    for i := OBXStart + 1 to HL7Data.segmentCount-1 do
    begin
        if HL7data[inttostr(i) + '.3.1.1'] = 'RTF' then
        begin
            HL7Data.DeleteSegment(i);
            break;
        end;
    end;
end.

```

- Go to the **Server Parameters** option on the left hand menu. Here you need to Enter the **Server File Prefix**. Enter a 3 letter acronym for the practice. This prefix will be used when naming outgoing messages.

