

# Importing PKI Location Certificates in Capricorn

## Overview

This guide provides instructions on how to import your PKI Location Certificate into your Medical-Objects Download client (Capricorn).

- 1 [Overview](#)
- 2 [Accessing the Capricorn Configuration](#)
- 3 [Configuring PKI Location Certificates in Medical Objects Capricorn](#)

### Note:

If you require a new CD, you can download the STS AddressBook Update forms below:

STS AddressBook Update: [ALL Current Practitioners](#)

STS AddressBook Update: [Individual](#)

If you require any assistance with the installation or configuration, or if you have any questions, please contact the Medical-Objects Helpdesk on (07) 5456 6000.

If you have not Installed the Medical-Objects Download client, Please see the guide for [Installing Capricorn on Windows](#).

## Accessing the Capricorn Configuration

### Note:

In some cases, the Capricorn may be configured as a service. See [this guide](#) for instructions on how to launch the Capricorn if it is set up as a service.

1. To launch the HL7 Tray application, Go to **Start Menu, All Programs, Medical-Objects** and select the **Medical-Objects Capricorn**. Alternatively, You can go to **C:\MO\Capricorn** and run the **Capricorn.exe**.
2. The following icon will appear in the tray. Double click on it to bring up the log window.

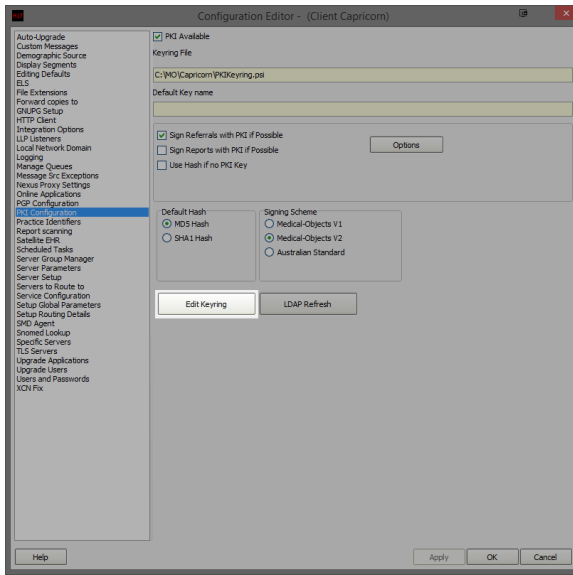


3. When the log window is displayed, Click on the **Configuration** icon highlighted below, or select **Utility** and select **Configuration**.

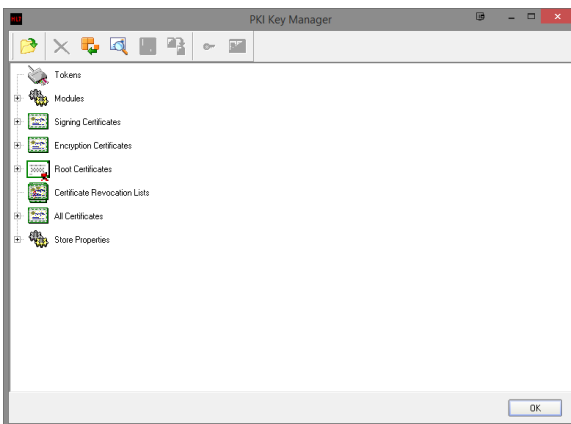


## Configuring PKI Location Certificates in Medical Objects Capricorn

1. Select **PKI Configuration** from the left hand window.
2. Select the **Edit Keying** button.



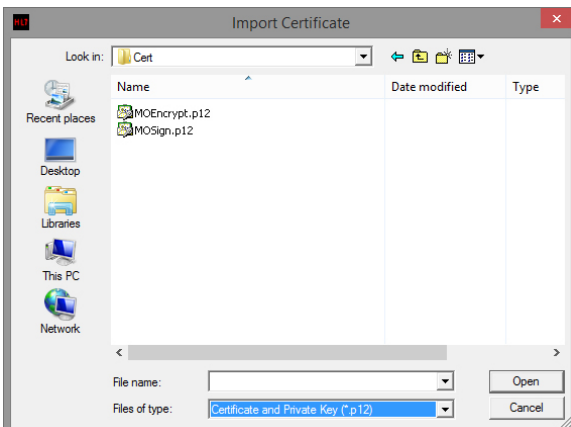
3. The **PKI Key Manager** window will open as shown below.



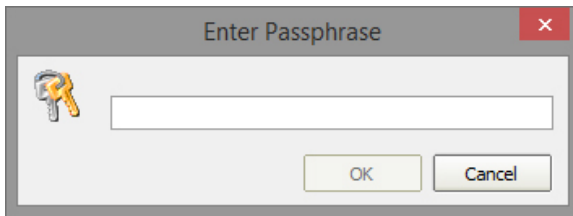
4. Select the **Import Certificate** button.



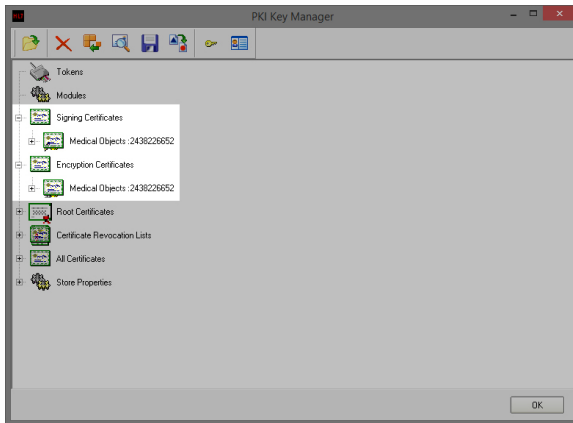
5. Once you click the button, an **Import Certificate** search window will open.



6. Make sure you select **Files of Type** to be **Certificate and Private Key (\*.p12)**.
7. Once you have located the Certificates, Select one and click **Open**.
8. Once you have clicked **Open** you will be required to enter a Passphrase. The Passphrase should have accompanied the CD when delivered by Medicare.



9. Once you have completed the process from Steps 4-8 for the Encryption certificate, they will be displayed as follows



10. Before you click OK, select the certificate listed under **Signing Certificate**, and then click the **'key'** icon on the toolbar. This will set it as default and make the certificate bold.
11. Click **OK** to close the **PKI Key Manager** window
12. Once you click **OK** a Validation Error window may appear. Click the Proceed button.

**Note:**

**(QLD Sites Only)** Now that you are finished, please contact Medical-Objects ((07) 5456 6000) and let them know it's done so they can notify Queensland Health to send you a test message.