

Healthtrack

Overview:

This guide provides instruction on configuring both Medical-Objects Capricorn and Healthtrack software to import electronic results.

If you require any assistance with the installation or configuration, or if you have any questions, please contact the Medical-Objects Helpdesk on (07) 5456 6000.

If you have not installed the Medical-Objects Download client, Please see the guide for [Installing Capricorn on Windows](#).

1 [Overview:](#)
2 [Configuring Capricorn Software](#)

2.1 [Accessing the Capricorn Configuration Window](#)
2.2 [Capricorn Configuration Settings](#)

Configuring Capricorn Software

Accessing the Capricorn Configuration Window

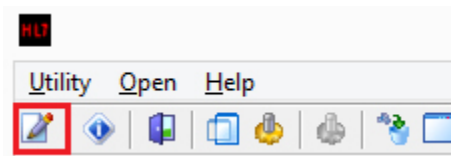
Note:

In some cases, the Capricorn may be configured as a service. See [this guide](#) for instructions on how to launch the Capricorn if it is set up as a service.

1. To launch the HL7 Tray application, Go to **Start Menu, All Programs, Medical-Objects** and select the **Medical-Objects Capricorn**. Alternatively, You can go to **C:\MO\Capricorn** and run the **Capricorn.exe**.
2. The following icon will appear in the tray. Double click on it to bring up the log window.

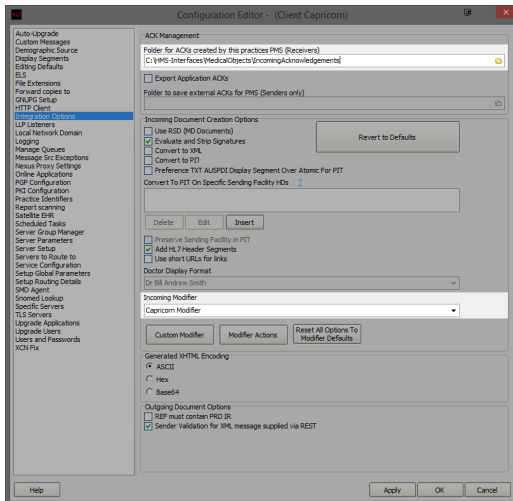


3. When the log window is displayed, Click on the **Configuration** icon highlighted below, or select **Utility** and select **Configuration**.



Capricorn Configuration Settings

1. Click on **Integration Options**.



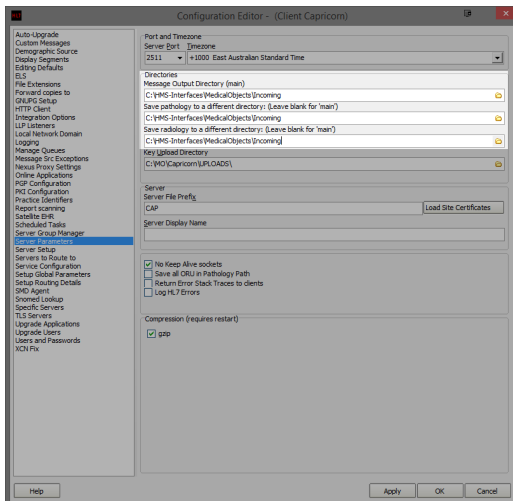
2. Make sure the **Ack Management** folder is set to the following:

If installed on a workstation --> C:\HMS-Interfaces\MedicalObjects\IncomingAcknowledgements

if installed on a server --> \\Server\HMS-Interfaces\MedicalObjects\IncomingAcknowledgements

3. Make sure the **Incoming Modifier** is set to **Capricorn Modifier**.

4. Select **Server Parameters** from the left hand panel.



5. Set the following paths.

```
On a workstation
Message Output Directory (Main) --> C:\HMS-
Interfaces\MedicalObjects\Incoming
Pathology Directory --> C:\HMS-Pathology\MedicalObjects\Incoming
Radiology Directory --> C:\HMS-Radiology\MedicalObjects\Incoming
```

```
On a Server
Message Output Directory (Main) --> C:\HMS-
Interfaces\MedicalObjects\Incoming
Pathology Directory --> C:\HMS-Pathology\MedicalObjects\Incoming
Radiology Directory --> C:\HMS-Radiology\MedicalObjects\Incoming
```

6. The configuration is now complete.

