

Medical Wizard

Overview:

This guide provides instruction on configuring both Medical-Objects Capricorn and Medical Wizard software to import electronic results.

If you require any assistance with the installation or configuration, or if you have any questions, please contact the Medical-Objects Helpdesk on (07) 5456 6000.

If you have not installed the Medical-Objects Download client, Please see the guide for [Installing Capricorn on Windows](#).

- 1 [Overview:](#)
- 2 [Configuring Capricorn Software](#)
 - 2.1 [Accessing the Capricorn Configuration Window](#)
 - 2.2 [Capricorn Configuration Settings](#)

Configuring Capricorn Software

Accessing the Capricorn Configuration Window

Note:

In some cases, the Capricorn may be configured as a service. See [this guide](#) for instructions on how to launch the Capricorn if it is set up as a service.

1. To launch the HL7 Tray application, Go to **Start Menu, All Programs, Medical-Objects** and select the **Medical-Objects Capricorn**. Alternatively, You can go to **C:\MO\Capricorn** and run the **Capricorn.exe**.
2. The following icon will appear in the tray. Double click on it to bring up the log window.

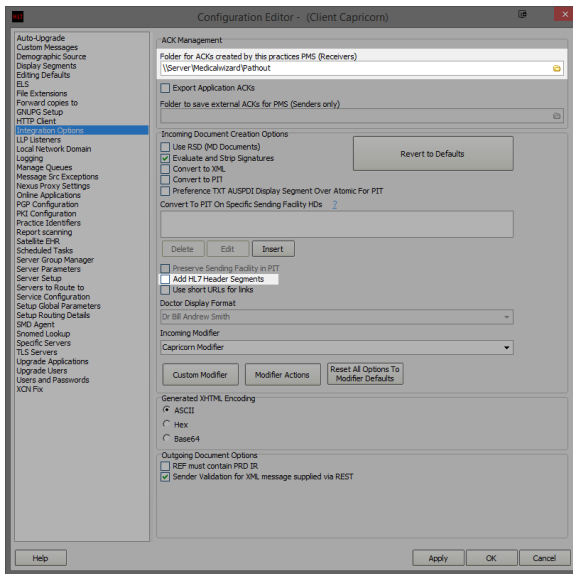


3. When the log window is displayed, Click on the **Configuration** icon highlighted below, or select **Utility** and select **Configuration**.



Capricorn Configuration Settings

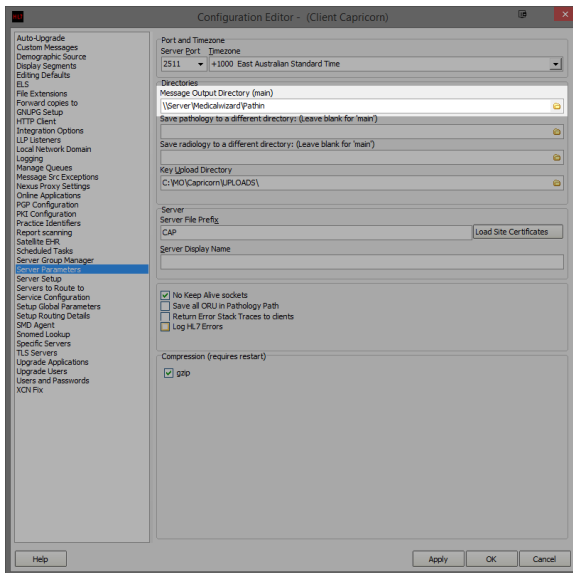
1. Click on **Integration Options**.



Add HL7 Header Segments will need to be unticked.

Set the **Ack Management** Path to the Medical Wizard **Pathout** folder. Use a **UNC file path** if possible. For example: **\\Server\Medicalwizard\Pathout**

2. Select **Server Parameters** from the left hand panel.



Set the **Message output directory** to Medical Wizards **Pathin** folder. Use a **UNC file path** if possible. For example: **\\Server\Medicalwizard\Pathin**

3. Results should begin importing into Medical Wizard.