

# Medical Spectrum

## Overview

This guide provides instruction on configuring both Medical-Objects Download Client (Capricorn) and Medical Spectrum software to import electronic results.

If you require any assistance with the installation or configuration, or if you have any questions, please contact the Medical-Objects Helpdesk on (07) 5456 6000.

If you have not installed the Medical-Objects Download client, Please see the guide for [Installing Capricorn on Windows](#).

## Configuring Capricorn Software

### Accessing the Capricorn Configuration Window

- 1 Overview
- 2 Configuring Capricorn Software
  - 2.1 Accessing the Capricorn Configuration Window
  - 2.2 Capricorn Configuration Settings
- 3 Configuring Medical Spectrum Classic
  - 3.1 Medical-Objects Letters
  - 3.2 Medical-Objects Pathology
  - 3.3 Medical-Objects Radiology
- 4 Importing a Result into Medical Spectrum

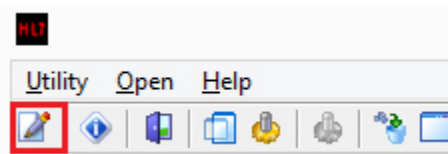
#### Note:

In some cases, the Capricorn may be configured as a service. See [this guide](#) for instructions on how to launch the Capricorn if it is set up as a service.

1. To launch the HL7 Tray application, Go to **Start Menu, All Programs, Medical-Objects** and select the **Medical-Objects Capricorn**. Alternatively, You can go to **C:\MO\Capricorn** and run the **Capricorn.exe**.
2. The following icon will appear in the tray. Double click on it to bring up the log window.

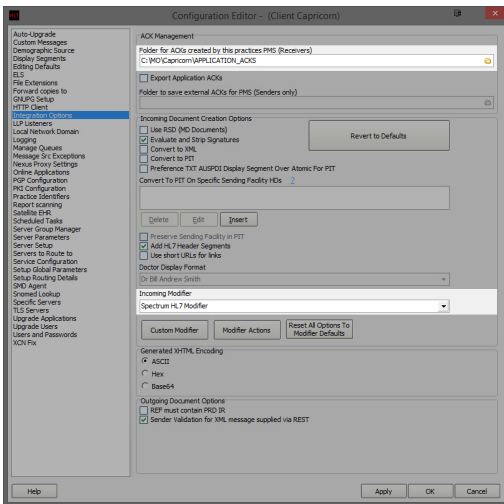


3. When the log window is displayed, Click on the **Configuration** icon highlighted below, or select **Utility** and select **Configuration**.



## Capricorn Configuration Settings

1. Select the **Integration Options** in the left panel.
2. Make sure at the bottom of the panel that under **Incoming Modifier** that **Spectrum HL7 Modifier** is set, as shown below.

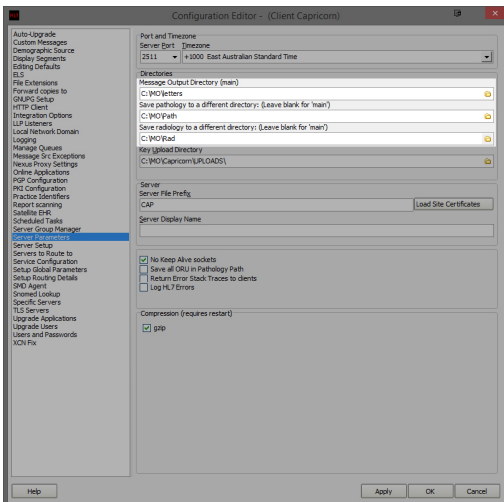


### Important:

Older versions of Spectrum will **NOT** import **ORU** or **HL7** files that have file names over 9 Characters long. It does not have this problem with **PIT** files, so be sure to convert the files to **PIT**. The 9 Character limit also affects file paths. so if your results are in a folder called **INCOMING RESULTS** for example. It will not look in that path.

3. In the left hand side panel, select **Server Parameters**.
4. In **Message Output Directory (Main)**, Enter the path for letters to be imported in to. For example:

C:\MO\Letters\



5. Enter the Pathology and Radiology paths as shown above.

Pathology - C:\MO\Path  
Radiology - C:\MO\Rad

- Click **Apply** and **OK**.

The Configuration for Medical Spectrum is complete.

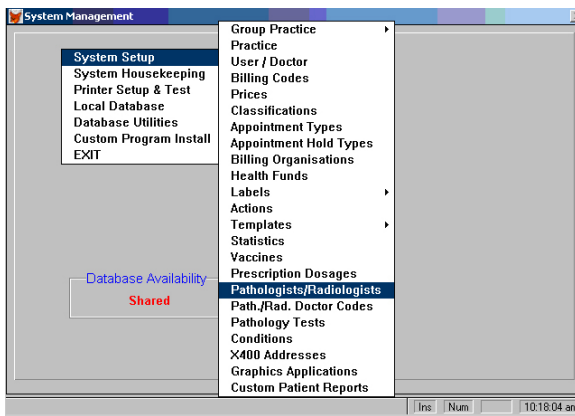
## Configuring Medical Spectrum Classic

### Medical-Objects Letters

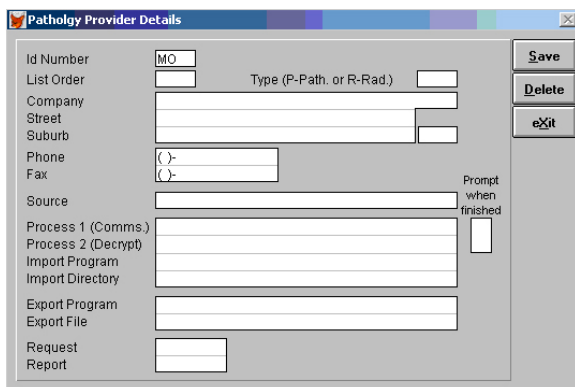
- Open Medical Spectrum.



- Click on the **System** icon.
- The following window will open.



- Click **System Setup**.
- Click **Pathologists/Radiologists**.

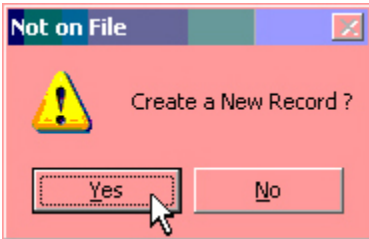


6. Enter MO in the **Id Number** field and press TAB.

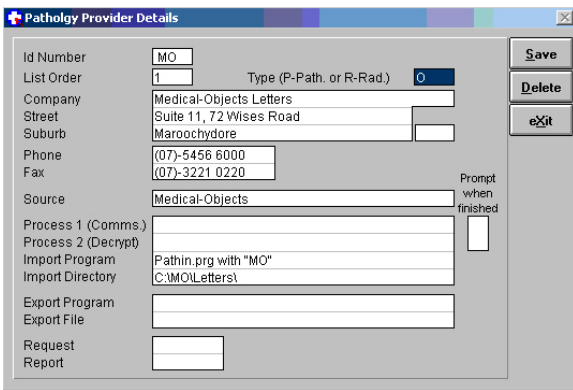
**Note:**

Make sure you backspace to the left in the ID Number field to avoid blanks; you cannot delete an entry once it has been created. If MO is already configured, press TAB to call up the details. You can also select Medical-Objects from the available drop down list; this will display the ID Number only. Press TAB to call up the details.

7. If it is a new record, the following window will appear.



8. Click **Yes**.



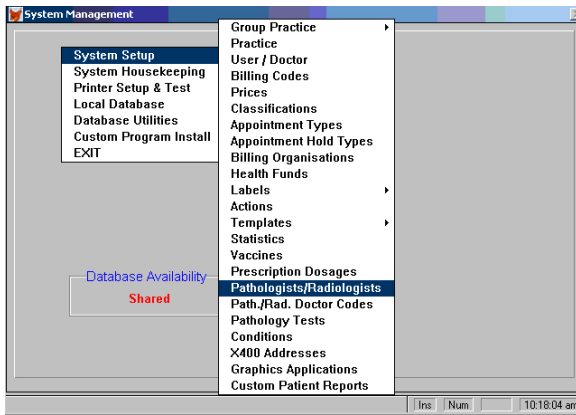
9. Enter in the above information (Make sure your data is accurate as you cannot delete the contact once it has been saved).

10. Click **Save**.

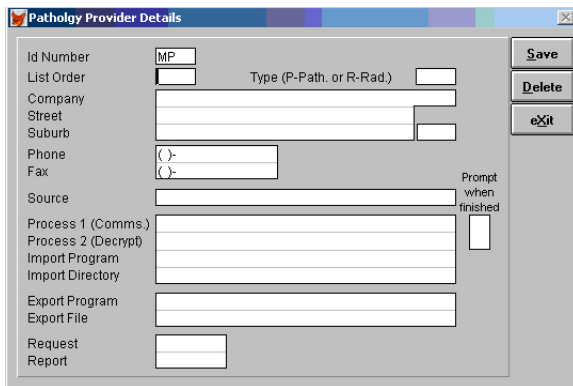
11. Click **Exit**.

## Medical-Objects Pathology

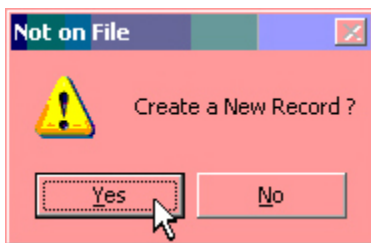
1. We follow the same steps taken in the first section as shown below.



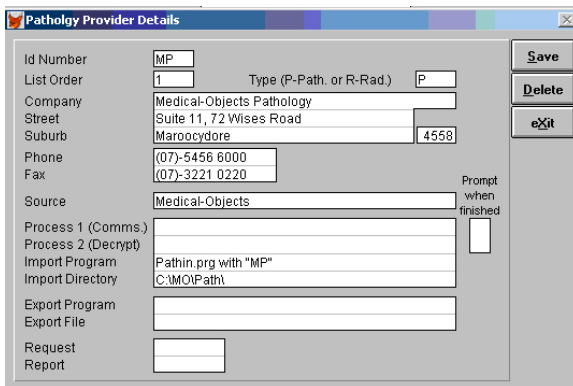
2. Enter MP in the Id Number field and press TAB.



3. If it is a new record the following window will appear.



4. Click Yes.



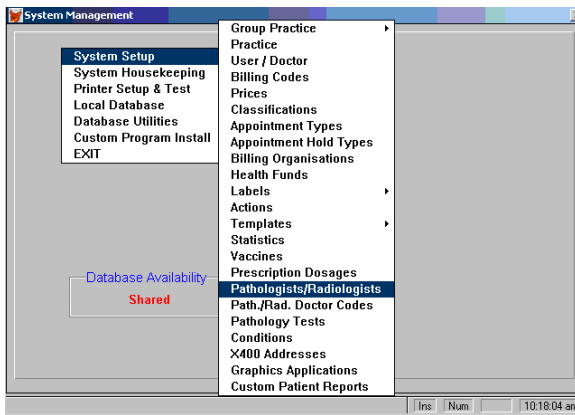
5. Enter in the above information (Make sure your data is accurate as you cannot delete the contact once it has been saved)

6. Click Save.

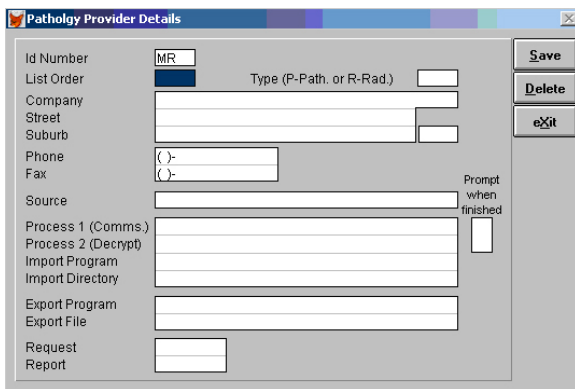
7. Click **Exit**.

## Medical-Objects Radiology

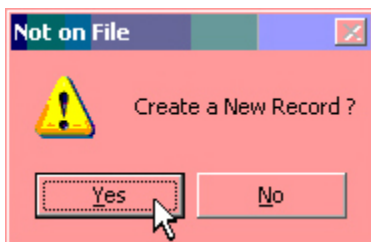
1. We follow the same steps taken in the first and second sections as shown below.



2. Enter **MR** in the **Id Number** and press **TAB**.



3. If it is a new record the following window will appear.



4. Click **Yes**.

5. Enter in the above information (Make sure your data is accurate as you cannot delete the contact once it has been saved).
6. Click **Save**.
7. Click **Exit**.

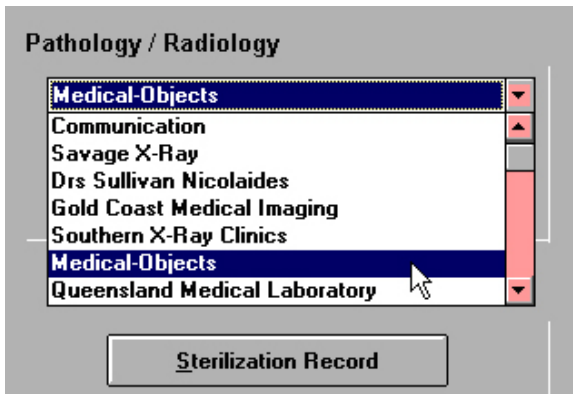
## Importing a Result into Medical Spectrum

1. Click the **Medical** Icon.



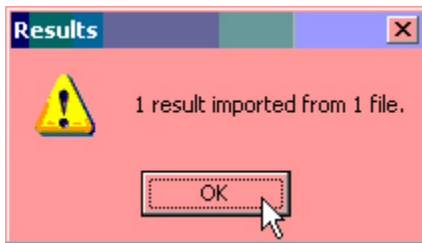
2. Click the **Communication** drop-down list.

3. Select **Medical-Objects Letters**, **Medical-Objects Pathology**, or **Medical-Objects Radiology** to see what results have arrived.

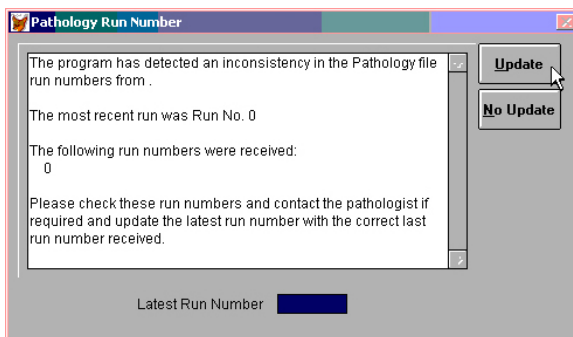


**Note**

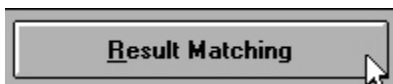
If there are any results, the number of results imported will show. If there are no results, this number will be 0.



4. Click **OK**.



5. Click the **Update** at the **Pathology Run Number** message.

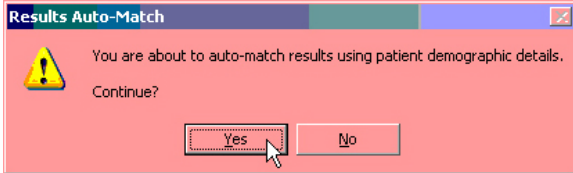


6. Click **Result Matching** to see if any results require matching.
7. The following window is displayed.

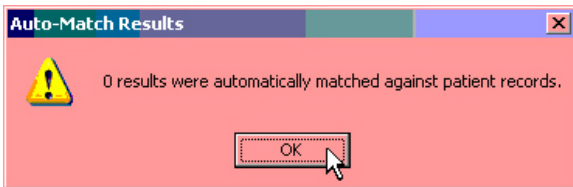




8. Click **Auto-Match -2**.



9. Click **Yes**.



10. Click **OK**.

11. Click **Exit** on the **Pathology Result Matching** window.

12. Click **Exit** on the **Medical** window.

**Note:**

You should now be back to the main window.