

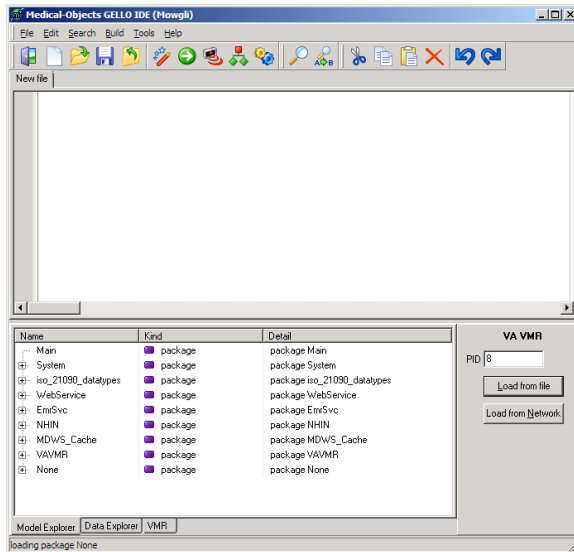
# VA VMR Gello - Getting Started

## Overview

- 1 Overview
- 2 Changing the patient context

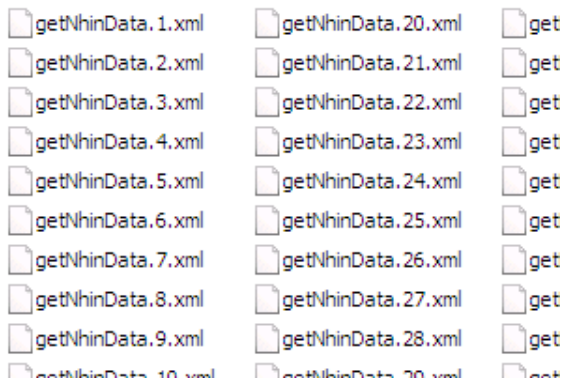
This guide will give you a step by step guide to show you how to run the Gello examples provided as part of the Gello IDE with VA Nhin data.

Install the download program and start the Mowgli IDE. At the end of the setup process, you will see the IDE which looks as follows.



You will see on the bottom right hand side a panel "VA VMR" which has a text field that says PID "8". This is the patient context that the Gello example will be executed in.

The actual test patient data is stored in NHIN XML data files. These files were obtained from the MDWS webservice getNhinData call. You will find them in the "C:\MO\Gello\_VAVMR\nhin" directory if you chose the default install location.



The VA VMR panel selection PID "8" selects the "getNhinData.8.xml" file.

Now, on the "File" menu choose "Open". Navigate to "C:\MO\Gello\_VAVMR\VA\_Gello".



