

Locum

Overview

This guide is to provide a basic overview of the configuration for the Medical-Objects Download Client (Capricorn) to drop off electronic results for Locum software.

If you require any assistance with the installation or configuration, or if you have any questions, please contact the Medical-Objects Helpdesk on (07) 5456 6000.

If you have not installed the Medical-Objects Download client, Please see the guide for [Installing Capricorn on Windows](#).

- 1 [Overview](#)
- 2 [Configuring Capricorn Software](#)
 - 2.1 [Accessing the Capricorn Configuration Window](#)
 - 2.2 [Capricorn Configuration Settings](#)

Configuring Capricorn Software

Accessing the Capricorn Configuration Window

Note:

In some cases, the Capricorn may be configured as a service. See [this guide](#) for instructions on how to launch the Capricorn if it is set up as a service.

1. To launch the HL7 Tray application, Go to **Start Menu, All Programs, Medical-Objects** and select the **Medical-Objects Capricorn**. Alternatively, You can go to **C:\MO\Capricorn** and run the **Capricorn.exe**.
2. The following icon will appear in the tray. Double click on it to bring up the log window.

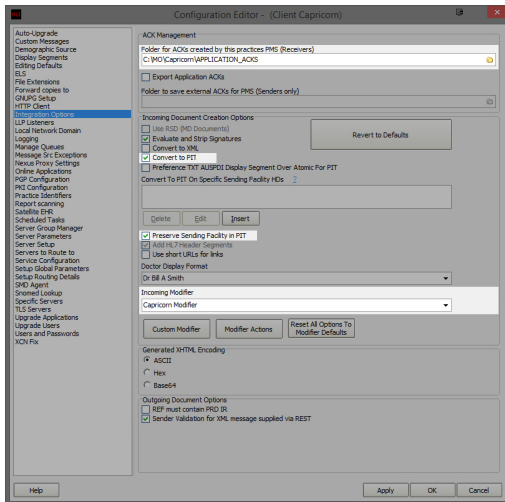


3. When the log window is displayed, Click on the **Configuration** icon highlighted below, or select **Utility** and select **Configuration**.



Capricorn Configuration Settings

1. Select **Integration Options** from the left hand panel.



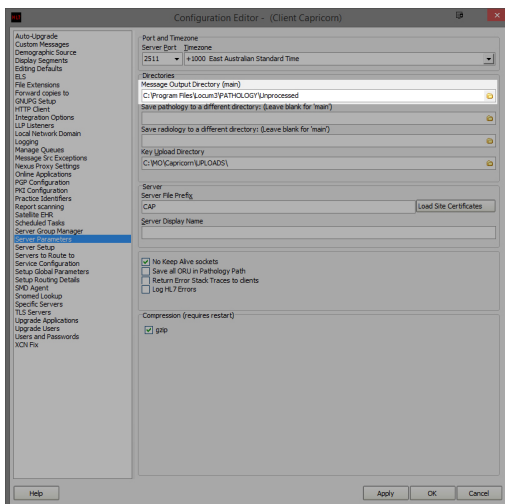
Set the **Ack Management** path to the following:

C:\MO\Capricorn\APPLICATION_ACKS

Make sure the **Incoming Modifier** is set to **Capricorn Modifier**

Make sure **Convert to PIT** and **Preserve Sending Facility in PIT** is checked.

2. Click on **Server Parameters** from the left hand panel.



3. Set the **Message Output Directory (main)** to the following:

C:\Program Files\Locum3\PATHOLOGY\Unprocessed

4. Click **Apply** and **OK**.

Locum should automatically import results.